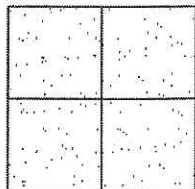


# CORNER RECORD

Document Number CR12-200  
 County of San Joaquin, California

City of \_\_\_\_\_

Brief Legal Description ALPINE AVENUE @ DELAWARE AVENUE  
(WITHIN SECTION 32, TOWNSHIP 2 NORTH, RANGE 6 EAST, M.D.B. & M.)



## CORNER TYPE

Government Corner ☐ Control ☐  
 Meander ☐ Property ☐  
 Rancho ☐ Other ☒

Date of Survey May 4, 2012

## COORDINATES (Optional)

N. \_\_\_\_\_  
 E. \_\_\_\_\_  
 Zone \_\_\_\_\_ NAD27 ☐ NAD83 ☐  
 NAD83 Epoch \_\_\_\_\_  
 Elev. \_\_\_\_\_  
 Vert. Datum: NGVD29 ☐ NAVD88 ☐  
 Meas. Units: Metric ☐ Imperial ☒

Corner - Left as found ☒ Found and tagged ☐ Established ☐ Reestablished ☐ Rebuilt ☐

Identification and type of corner found: Evidence used to identify or procedure used to establish or reestablish the corner:  
SEE SKETCH ON BACKSIDE.

A description of the physical condition of the monument as found and as set or reset:  
SEE SKETCH ON BACKSIDE.

## SURVEYOR'S STATEMENT

This Corner Record was prepared by me or under my direction in conformance with  
 the Land Surveyors' Act on June 12, 2012.

Signed James E Hart P.L.S. Number 8657

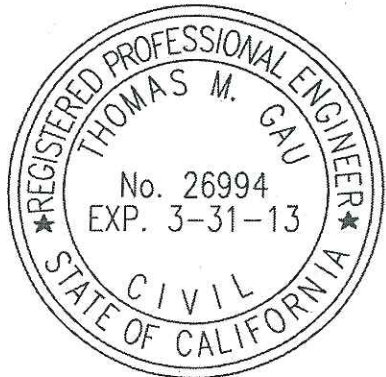
## COUNTY SURVEYOR'S STATEMENT

This Corner Record was received JUNE 12, 2012 and examined  
 and filed June 19, 2012.

Signed Thomas M. Gau R.C.E. No. 26994

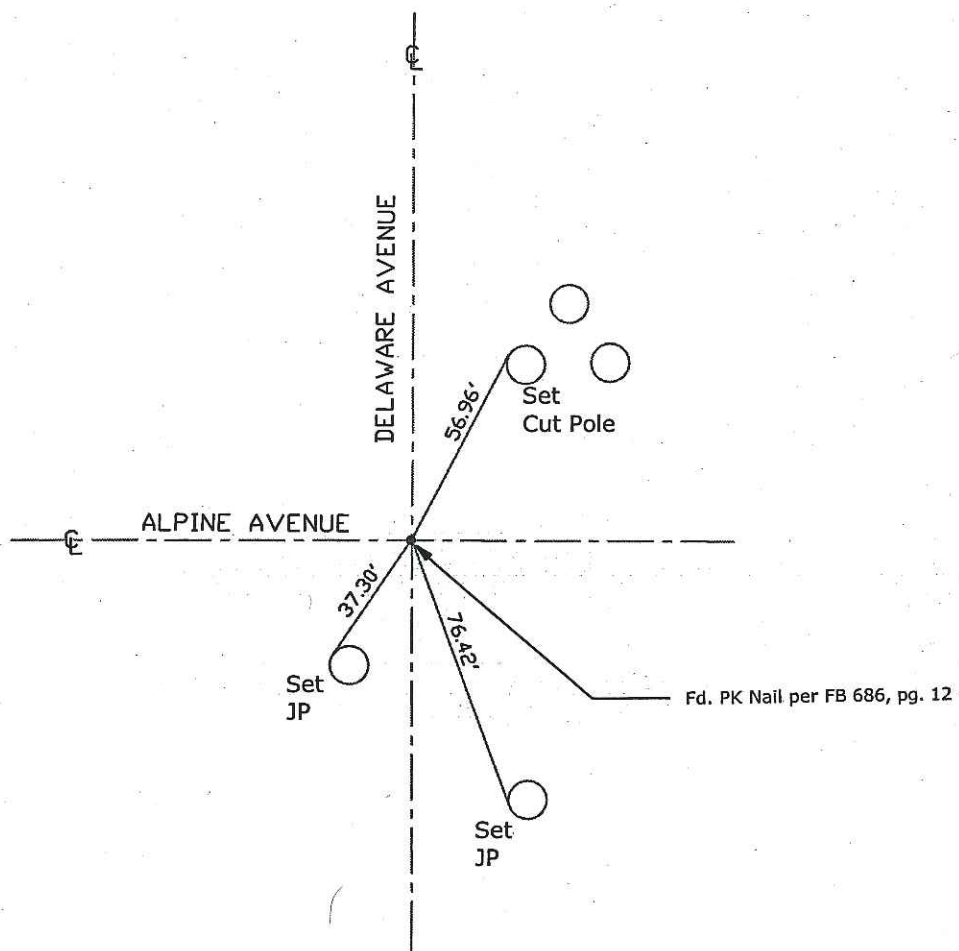
Title County Surveyor

County Surveyor's Comment \_\_\_\_\_





N.T.S.



Note: Found Monuments are not tagged  
unless otherwise noted.

"No Attempt Was Made to Verify the Monument(s)"

Set=Conc. Nail with Brass Washer Stamped

"S.J. Co.", unless otherwise noted

Fd.=Found Conc. Nail with Brass Washer Stamped

"S.J. Co.", unless otherwise noted

CR=Corner Record

FP=Fence Post

JP=Joint Pole

LP=Light Pole

PP=Power Pole

GP=Guy Pole

SP=Service Pole

TP=Telephone Pole

S.F.N.=Searched Found Nothing

N.T.S.=Not To Scale

M&P=Maps & Plats

PM=Parcel Map

RS=Record of Survey

FB=Field Book