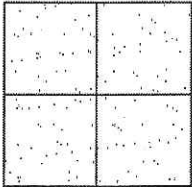


CORNER RECORD

Document Number CR 12-184
County of San Joaquin, California

City of _____

Brief Legal Description KRELL LANE 1454'+/- EAST OF MCKINLEY AVENUE
(WITHIN SECTION 15, C.M. WEBER GRANT)



CORNER TYPE

Government Corner ☐ Control ☐
Meander ☐ Property ☐
Rancho ☐ Other ☒

Date of Survey May 1, 2012

COORDINATES (Optional)

N. _____
E. _____
Zone _____ NAD27 ☐ NAD83 ☐
NAD83 Epoch _____
Elev. _____
Vert. Datum: NGVD29 ☐ NAVD88 ☐
Meas. Units: Metric ☐ Imperial ☒

Corner - Left as found ☒ Found and tagged ☐ Established ☐ Reestablished ☐ Rebuilt ☐

Identification and type of corner found: Evidence used to identify or procedure used to establish or reestablish the corner:
SEE SKETCH ON BACKSIDE.

A description of the physical condition of the monument as found and as set or reset:
SEE SKETCH ON BACKSIDE.

SURVEYOR'S STATEMENT

This Corner Record was prepared by me or under my direction in conformance with
the Land Surveyors' Act on May 7, 2012.

Signed James E. Hart P.L.S. Number 8657

COUNTY SURVEYOR'S STATEMENT

This Corner Record was received MAY 7, 2012 and examined
and filed MAY 12, 2012.

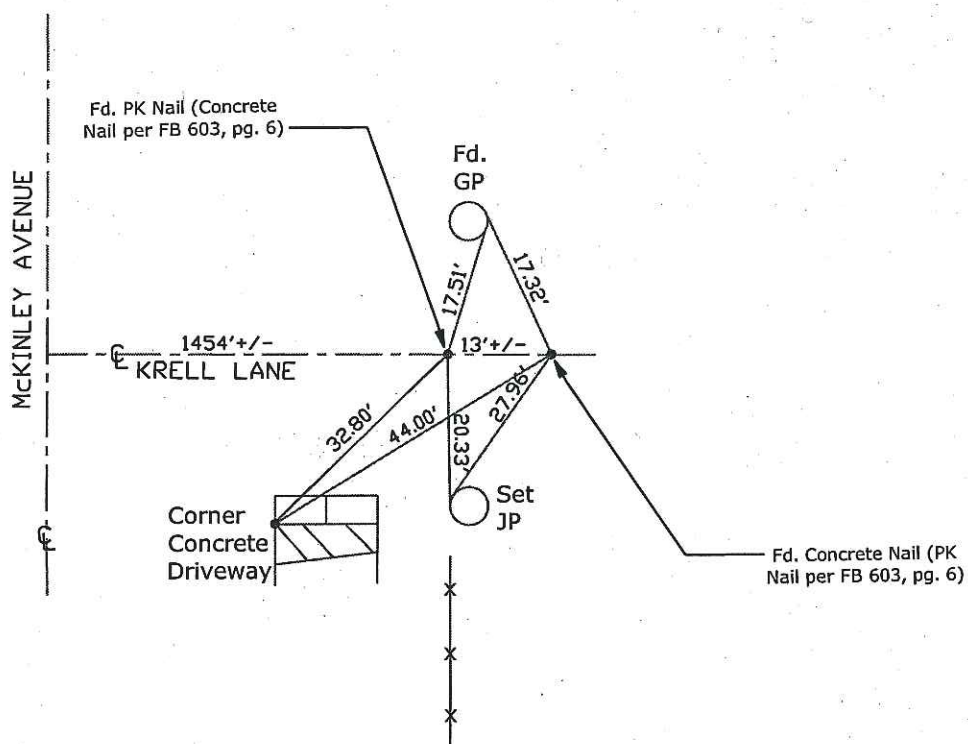
Signed Thomas M. Gau R.C.E. No. 26994
Title County Surveyor

County Surveyor's Comment _____





N.T.S.



Note: Found Monuments are not tagged unless otherwise noted.

"No Attempt Was Made to Verify the Monument(s)"

Set=Conc. Nail with Brass Washer Stamped
"S.J. Co.", unless otherwise noted

Fd.=Found Conc. Nail with Brass Washer Stamped
"S.J. Co.", unless otherwise noted

CR=Corner Record

FP=Fence Post

JP=Joint Pole

LP=Light Pole

PP=Power Pole

GP=Guy Pole

SP=Service Pole

TP=Telephone Pole

S.F.N.=Searched Found Nothing

N.T.S.=Not To Scale

M&P=Maps & Plats

PM=Parcel Map

RS=Record of Survey

FB=Field Book