

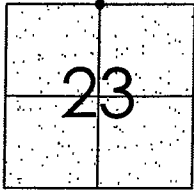
# CORNER RECORD

Document Number CR 12-144  
County of San Joaquin, California

City of \_\_\_\_\_

Brief Legal Description VON SOSTEN ROAD 2617.71' EAST OF HANSEN ROAD

NORTH QUARTER CORNER OF SECTION 23



T2S R4E  
M.D.B.&M.

## CORNER TYPE

Government Corner ☒ Control ☐  
Meander ☐ Property ☐  
Rancho ☐ Other ☐

Date of Survey September 7, 2011

## COORDINATES (Optional)

N. \_\_\_\_\_  
E. \_\_\_\_\_  
Zone \_\_\_\_\_ NAD27 ☐ NAD83 ☐  
NAD83 Epoch \_\_\_\_\_  
Elev. \_\_\_\_\_  
Vert. Datum: NGVD29 ☐ NAVD88 ☐  
Meas. Units: Metric ☐ Imperial ☒

Corner - Left as found ☐ Found and tagged ☐ Established ☐ Reestablished ☐ Rebuilt ☒

Identification and type of corner found: Evidence used to identify or procedure used to establish or reestablish the corner:  
SEE SKETCH ON BACKSIDE.

A description of the physical condition of the monument as found and as set or reset: \_\_\_\_\_  
SEE SKETCH ON BACKSIDE.

## SURVEYOR'S STATEMENT

This Corner Record was prepared by me or under my direction in conformance with  
the Land Surveyors' Act on April 12, 2012.

Signed James E. Hart P.L.S. Number 8657

## COUNTY SURVEYOR'S STATEMENT

This Corner Record was received APRIL 12, 2012 and examined  
and filed APRIL 23, 2012.

Signed Thomas M. Gau R.C.E. No. 26994  
Title County Surveyor

County Surveyor's Comment \_\_\_\_\_

THIS CORNER RECORD IS NOT IN COMPLIANCE WITH BOARD RULE 464(c)

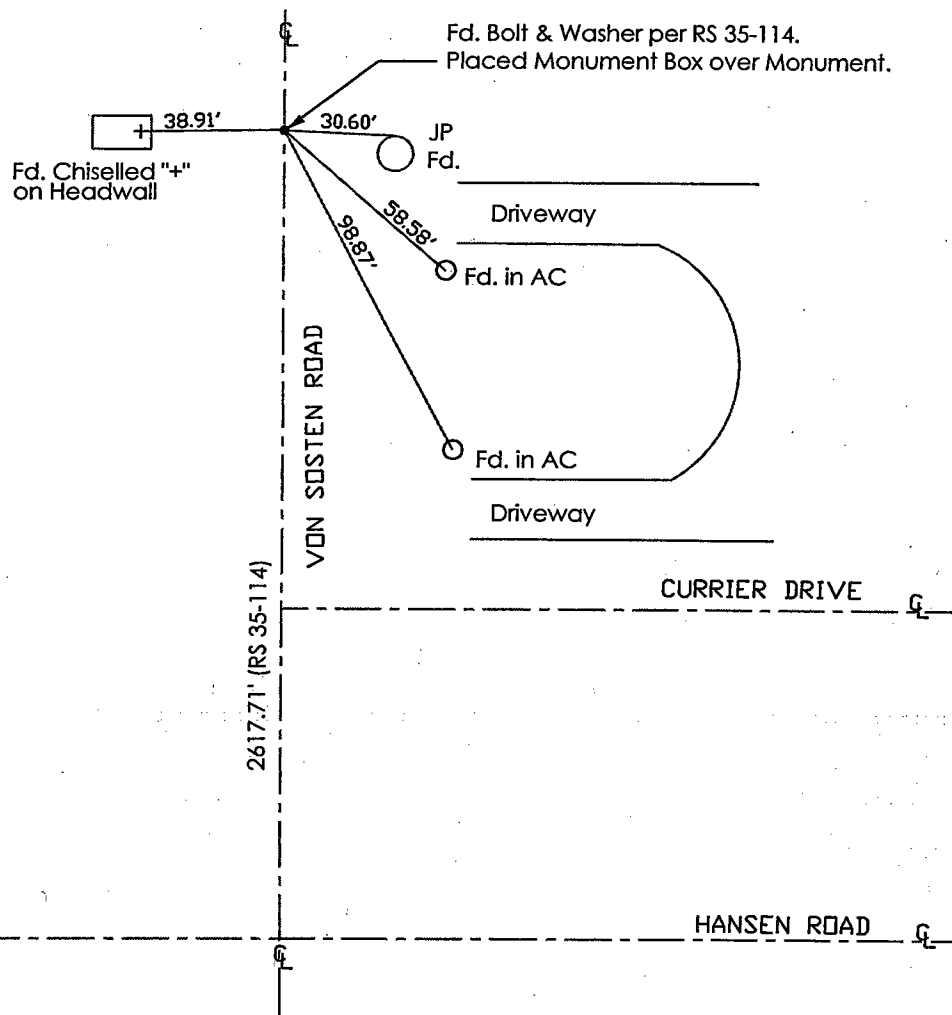
REGARDING SUBMITTAL WITHIN 90 DAYS FROM THE DATE OF SURVEY.

(D.D. Sheet No. 52)  
(Job No. 220792)





N.T.S.



Note: Found Monuments are not tagged  
unless otherwise noted.

"No Attempt Was Made to Verify the Monument(s)"

Set=Conc. Nail with Brass Washer Stamped

"S.J. Co.", unless otherwise noted

Fd.=Found Conc. Nail with Brass Washer Stamped

"S.J. Co.", unless otherwise noted

CR=Corner Record

FP=Fence Post

JP=Joint Pole

LP=Light Pole

PP=Power Pole

GP=Guy Pole

SP=Service Pole

TP=Telephone Pole

S.F.N.=Searched Found Nothing

N.T.S.=Not To Scale

M&P=Maps & Plats

PM=Parcel Map

RS=Record of Survey

FB=Field Book