

CORNER RECORD

Document Number CR 12-140
County of SAN JOAQUIN, California

City of STOCKTON

Brief Legal Description MONUMENT LOCATED IN THE INTERSECTION OF EIGHTH STREET AND "D" STREET
ON THE COMMON SECTION LINE BETWEEN SECTIONS 34 AND 46 OF, C.M. WEBER GRANT.

NW 1/4	NE 1/4
SW 1/4	SE 1/4

SECTION 46
C.M. WEBER GRANT

CORNER TYPE

Government Corner ☐ Control ☐
Meander ☐ Property ☐
Rancho ☐ Other ☒

Date of Survey 3-26-2012

COORDINATES (Optional)

N _____
E _____
Zone _____ NAD27 ☐ NAD83 ☐
NAD83 Epoch _____
Elev. _____
Vert. Datum: NVGD29 ☐ NAVD88 ☐
Meas. Units: Metric ☐ Imperial ☐

Corner— Left as found ☒ Found and tagged ☐ Established ☐ Reestablished ☐ Rebuilt ☐

Identification and type of corner found: Evidence used to identify or procedure used to establish or reestablish the corner:
FOUND 3/4" IRON PIPE IN MONUMENT WELL TAGGED LS 4876 AT THE INTERSECTION OF EIGHTH STREET
AND "D" STREET LOCATED ON THE COMMON SECTION LINE BETWEEN SECTIONS 34 AND 46, OF C.M. WEBER
GRANT. FOUND MONUMENT AS SHOWN ON RECORD MAP FILED IN BOOK 29 OF MAPS & PLATS AT PAGE 83,
SAN JOAQUIN COUNTY RECORDS.

A description of the physical condition of the monument as found and as set or reset: _____
MONUMENT IS IN AREA OF CONSTRUCTION, SET TIES AS SHOWN ON PAGE 2.

SURVEYOR'S STATEMENT

This Corner Record was prepared by me or under my direction in conformance with
the Land Surveyors' Act on APRIL 3, 2012,

Signed [Signature] P.L.S. or ~~R.C.E.~~ Number 6953



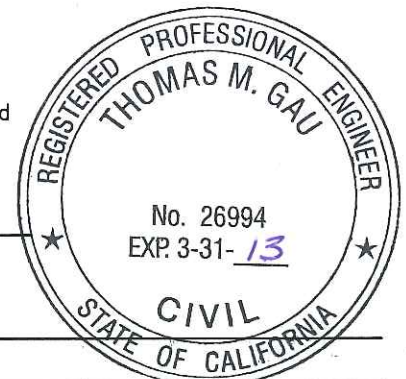
COUNTY SURVEYOR'S STATEMENT

This Corner Record was received APRIL 12, 2012 and examined
and filed APRIL 16, 2012.

Signed Thomas M. Gau P.L.S. or R.C.E. No: 26994

Title COUNTY SURVEYOR

County Surveyor's Comment _____



REFERENCES:

(R1) M.&P. 29-83, S.J.C.R.

(R2) R.S. 35-05, S.J.C.R.

FOUND BRASS DISK IN
MONUMENT WELL STAMPED
14S-25 LS 6670 AT THE
INTERSECTION OF EIGHTH
STREET AND POCK LANE. (R2)



NOT TO SCALE

LEGEND:



SET NAIL AND BRASS TAG IN ROAD LS 6953



FOUND MONUMENT AS NOTED.

S.J.C.R.

DENOTES SAN JOAQUIN COUNTY RECORDS

M.&P.

DENOTES MAPS & PLATS

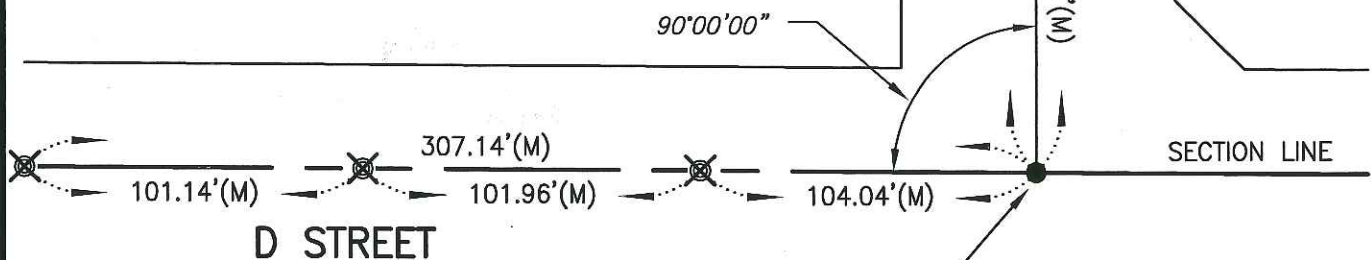
R.S.

DENOTES RECORD OF SURVEY

(M)

MEASURED DISTANCE. ALL DISTANCES ARE MEASURED
UNLESS NOTED OTHERWISE.

*SECTION 46
CM WEBER GRANT*



*SECTION 34
CM WEBER GRANT*

FOUND 3/4" IRON PIPE IN
MONUMENT WELL, TAGGED
LS 4876. (R1)