

CORNER RECORD

Document Number CR 12-139
County of SAN JOAQUIN, California

City of _____

Brief Legal Description MONUMENT LOCATED IN THE SOUTHWEST CORNER OF THE EMPIRE TRACT AND THE SOUTHEAST QUARTER OF SECTION 2, T.2N., R.4E., M.D.B.&M.

NW 1/4	NE 1/4
SW 1/4	SE 1/4

SEC.2 T2N, R4E

CORNER TYPE

Government Corner ☐ Control ☒
Meander ☐ Property ☐
Rancho ☐ Other ☐

Date of Survey 3-23-2012

COORDINATES (Optional)

N 2203981.11
E 6274412.70
Zone 3 NAD27 ☐ NAD83 ☒
NAD83 Epoch 2007.00
Elev. 5.1
Vert. Datum: NVGD29 ☐ NAVD88 ☒
Meas. Units: Metric ☐ Imperial ☐

Corner— Left as found ☒ Found and tagged ☐ Established ☐ Reestablished ☐ Rebuilt ☐

Identification and type of corner found: Evidence used to identify or procedure used to establish or reestablish the corner:
FOUND BUREAU OF RECLAMATION 3" ALUMINIUM DISK MONUMENT STAMPED "EMPIRE 1997" LOCATED IN THE SOUTHWEST CORNER OF THE EMPIRE TRACT APPROXIMATELY 1.3 MILES SOUTH ALONG EMPIRE TRACT ROAD FROM THE VENICE ISLAND FERRY AT EIGHT MILE ROAD AND ALSO LOCATED IN THE SOUTHEAST QUARTER OF SECTION 2, T.2N., R.4E., M.D.B.&M. FOUND MONUMENT AS PUBLISHED ON NATIONAL GEODETIC SURVEY (NGS) DATA SHEET RETRIEVED MARCH 20, 2012 FROM THE NGS WEBSITE FOR PID AE9885.

A description of the physical condition of the monument as found and as set or reset:
MONUMENT IS IN AREA OF CONSTRUCTION, SET TIES AS SHOWN ON PAGE 2.

SURVEYOR'S STATEMENT

This Corner Record was prepared by me or under my direction in conformance with the Land Surveyors' Act on MARCH 26,, 2012,

Signed [Signature] P.L.S. or R.C.E. Number 6953



COUNTY SURVEYOR'S STATEMENT

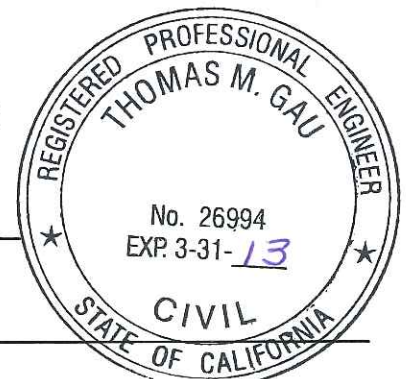
This Corner Record was received APRIL 12, 2012 and examined

and filed APRIL 16, 2012

Signed Thomas M. Gau P.L.S. or R.C.E. No: 26994

Title COUNTY SURVEYOR

County Surveyor's Comment _____



SET NAIL AND BRASS TAG
LS 6953, ON CONCRETE PAD
0.50'± SOUTH AND 0.50'±
WEST OF THE NORTHEAST
CORNER.

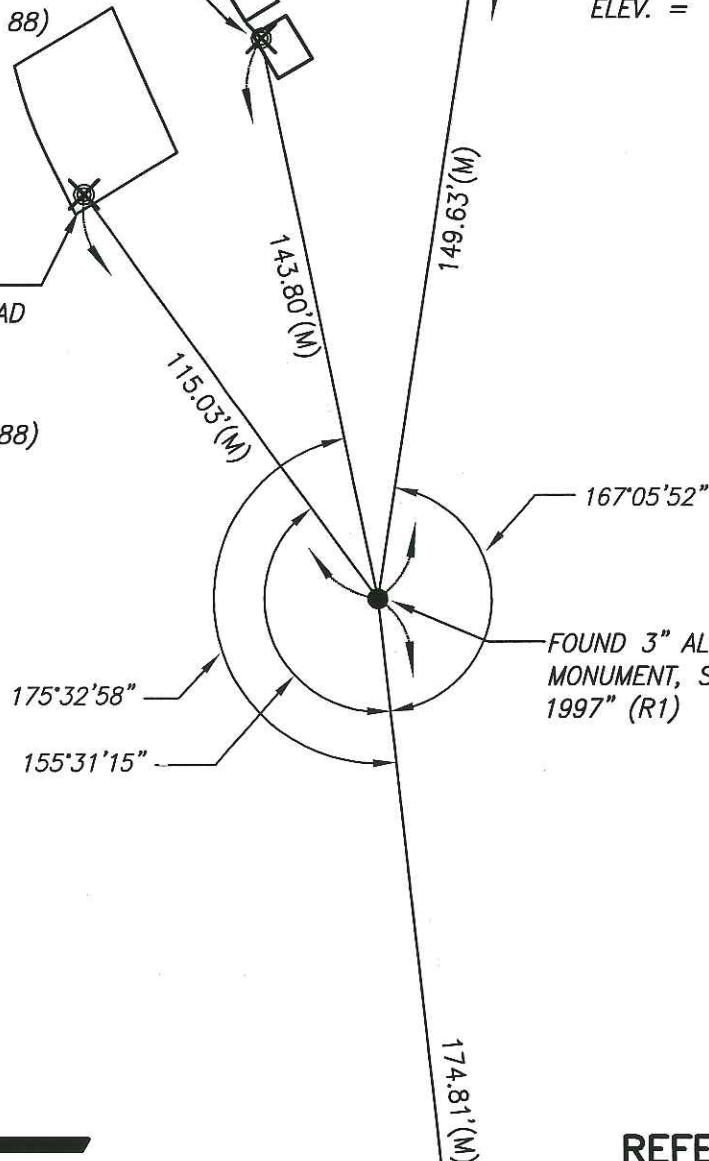
ELEV. = 16.080 FT.(NAVD 88)

SET NAIL AND BRASS TAG
LS 6953, ON CONCRETE PAD
0.50'± SOUTH AND 0.50'±
EAST OF THE NORTHWEST
CORNER.

ELEV. = 16.125 FT.(NAVD 88)

SET NAIL AND BRASS TAG
LS 6953, ON NORTH SIDE OF
CONCRETE BASE FOR STREET
LIGHT.

ELEV. = 19.463 FT.(NAVD 88)



NOT TO SCALE

REFERENCE:

(R1) R.S. 37-25, S.J.C.R.

LEGEND:

- ⊗ SET MONUMENT AS NOTED
- FOUND MONUMENT AS NOTED.
- S.J.C.R. DENOTES SAN JOAQUIN COUNTY RECORDS
- R.S. DENOTES RECORD OF SURVEY
- (M) MEASURED DISTANCE. ALL DISTANCES ARE MEASURED
UNLESS NOTED OTHERWISE.

FOUND 3/4" IRON PIPE NOT
TAGGED ON EMPIRE TRACT ROAD.
SET TAG LS 6953.
ELEV. = 11.510 FT.(NAVD 88)