

CORNER RECORD

Document Number CR 12-107
County of SAN JOAQUIN, California

City of RIPON

Brief Legal Description PROPERTY CORNER 25'± EAST OF THE APPARENT CENTERLINE OF OLIVE AVENUE
AND 1194.5'± SOUTH OF THE APPARENT NORTH LINE OF SECTION 25, T.2S., R.7E., M.D.B.&M.

CORNER TYPE

COORDINATES (Optional)

NW 1/4	NE 1/4
SW 1/4	SE 1/4

Government Corner ☐ Control ☐
Meander ☐ Property ☒
Rancho ☐ Other ☐

N _____
E _____
Zone _____ NAD27 ☐ NAD83 ☐
NAD83 Epoch _____
Elev. _____
Vert. Datum: NVGD29 ☐ NVGD88 ☐
Meas. Units: Metric ☐ Imperial ☐

SEC.25 T2S, R7E

Date of Survey 2-16-2012

Corner— Left as found ☐ Found and tagged ☐ Established ☐ Reestablished ☒ Rebuilt ☐

Identification and type of corner found: Evidence used to identify or procedure used to establish or reestablish the corner:
3/4" REBAR WITH BRASS TAG, RCE 8714, 25'± EAST OF THE APPARENT CENTERLINE OF OLIVE AVENUE
AND 1194.5'± SOUTH OF THE APPARENT NORTH LINE OF SECTION 25, T.2S., R.7E., M.D.B.&M. WAS
DESTROYED DURING CONSTRUCTION. FOUND WITNESS CORNERS AS SHOWN ON CORNER RECORD
DOCUMENT NUMBER 11-195.

A description of the physical condition of the monument as found and as set or reset: _____
SET 3/4" x 24" IRON PIPE WITH PLASTIC CAP STAMPED L.S. 6953 FROM TIES AS SHOWN ON PAGE 2.

SURVEYOR'S STATEMENT

This Corner Record was prepared by me or under my direction in conformance with
the Land Surveyors' Act on FEBRUARY 20, 2012,



Signed [Signature] P.L.S. or R.C.E. Number 6953

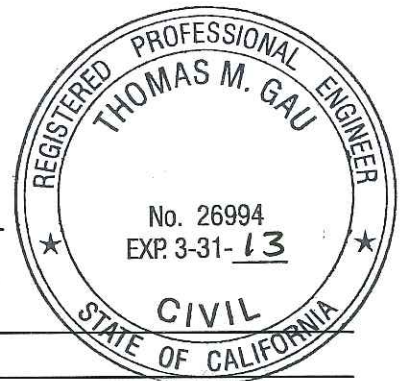
COUNTY SURVEYOR'S STATEMENT

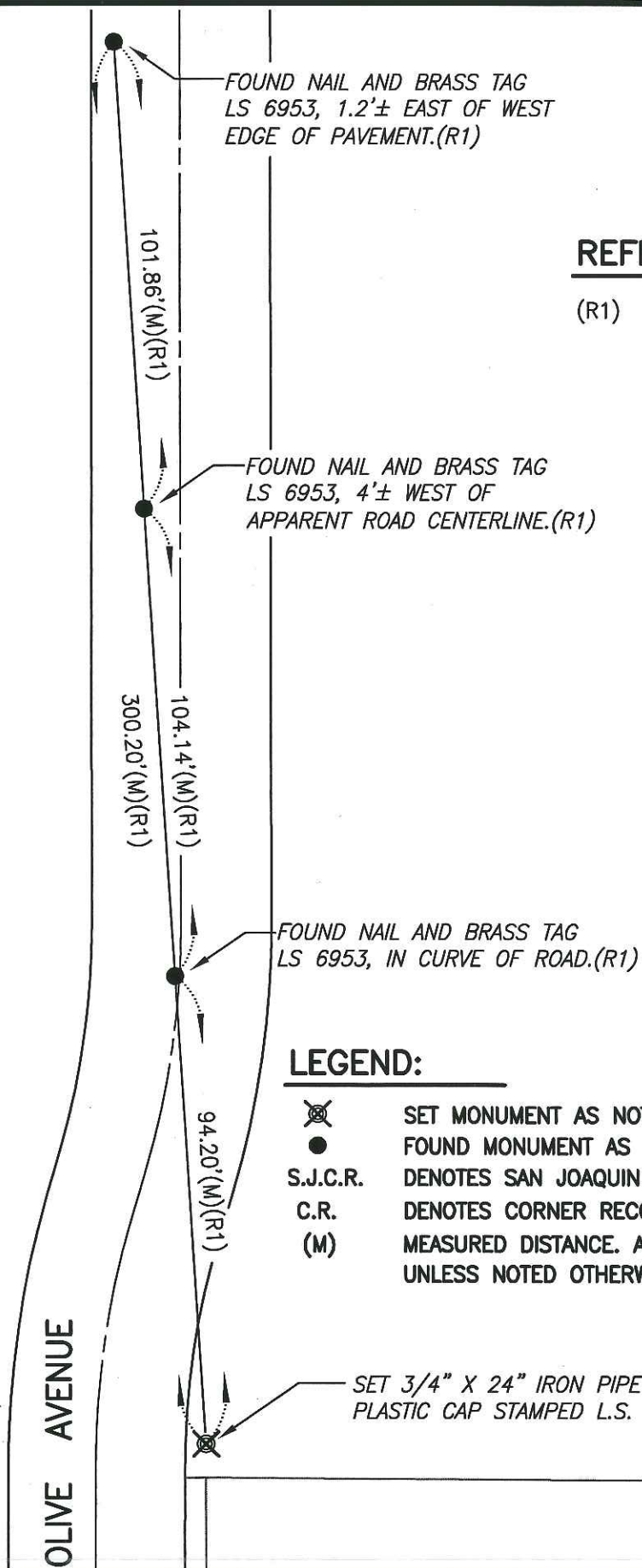
This Corner Record was received MARCH 15, 2012 and examined
and filed MARCH 19, 2012.

Signed Thomas M. Gau P.L.S. or R.C.E. No: 26994

Title COUNTY SURVEYOR

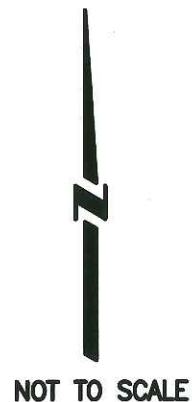
County Surveyor's Comment _____





REFERENCE:

(R1) C.R. 11-195, S.J.C.R.



LEGEND:

- ⊗ SET MONUMENT AS NOTED
- FOUND MONUMENT AS NOTED.
- S.J.C.R. DENOTES SAN JOAQUIN COUNTY RECORDS
- C.R. DENOTES CORNER RECORD
- (M) MEASURED DISTANCE. ALL DISTANCES ARE MEASURED UNLESS NOTED OTHERWISE.