

CORNER RECORD

Document Number CR 12-106City of RIPONCounty of SAN JOAQUIN, CaliforniaBrief Legal Description PROPERTY CORNER APPROXIMATELY 1314'± NORTH ALONG THE SECTION LINE
FROM THE APPARENT SW CORNER OF SECTION 25, T.2S., R.7E., M.D.B.&M.**CORNER TYPE****COORDINATES (Optional)**

NW 1/4	NE 1/4
SW 1/4	SE 1/4

Government Corner ☐ Control ☐
Meander ☐ Property ☒
Rancho ☐ Other ☐N _____
E _____
Zone _____ NAD27 ☐ NAD83 ☐
NAD83 Epoch _____
Elev. _____
Vert. Datum: NVGD29 ☐ NVGD88 ☐
Meas. Units: Metric ☐ Imperial ☐

SEC.25 T2S, R7E

Date of Survey 2-16-2012Corner— Left as found ☐ Found and tagged ☐ Established ☐ Reestablished ☒ Rebuilt ☐

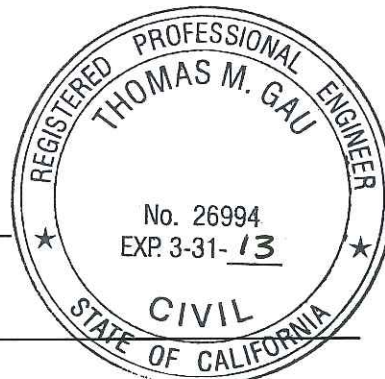
Identification and type of corner found: Evidence used to identify or procedure used to establish or reestablish the corner:

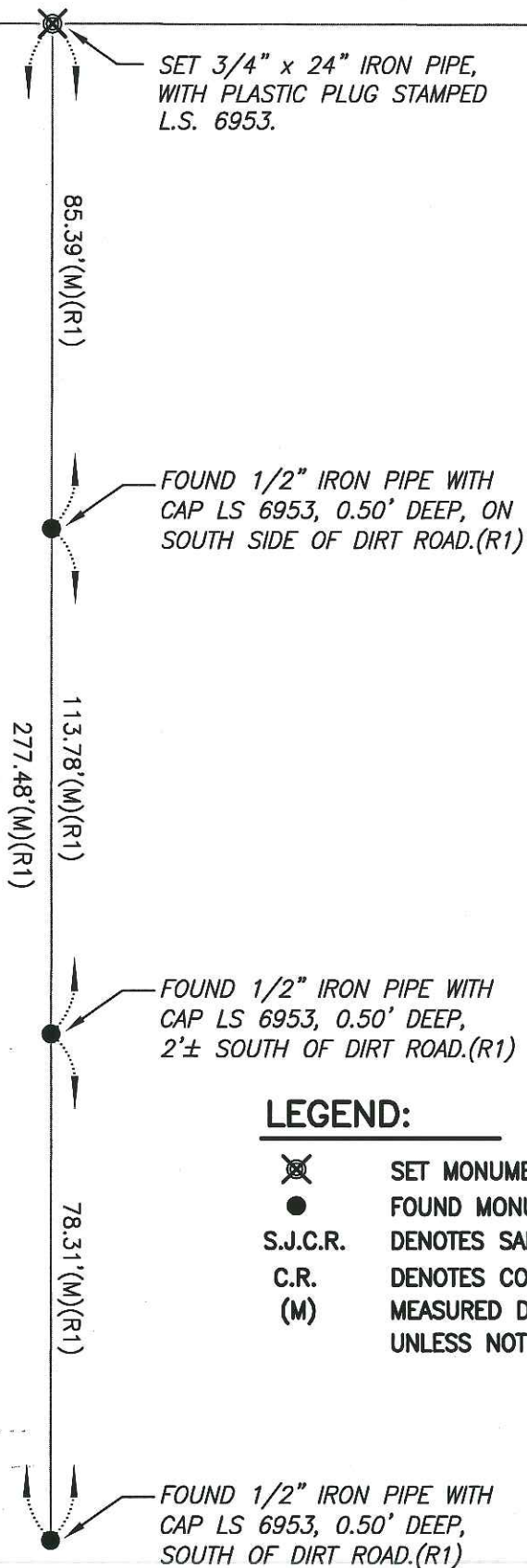
3/4" IRON PIPE NOT TAGGED, APPROXIMATELY 1314'± NORTH ALONG THE SECTION LINE FROM THE
APPARENT SW CORNER OF SECTION 25, T.2S., R.7E., M.D.B.&M WAS DESTROYED DURING CONSTRUCTION.
FOUND WITNESS CORNERS AS SHOWN ON CORNER RECORD DOCUMENT NUMBER 11-224.

A description of the physical condition of the monument as found and as set or reset:

SET 3/4" x 24" IRON PIPE WITH PLASTIC CAP STAMPED L.S. 6953 FROM TIES AS SHOWN ON PAGE 2.**SURVEYOR'S STATEMENT**This Corner Record was prepared by me or under my direction in conformance with
the Land Surveyors' Act on FEBRUARY 20, , 2012 ,Signed [Signature] P.L.S. or R.C.E. Number 6953**COUNTY SURVEYOR'S STATEMENT**This Corner Record was received MARCH 15 , 2012 and examined
and filed MARCH 19 , 2012 .Signed [Signature] P.L.S. or R.C.E. No: 26994Title COUNTY SURVEYOR

County Surveyor's Comment _____





REFERENCE:

(R1) C.R. 11-224, S.J.C.R.



LEGEND:

- | | |
|----------|---|
| | SET MONUMENT AS NOTED |
| | FOUND MONUMENT AS NOTED. |
| S.J.C.R. | DENOTES SAN JOAQUIN COUNTY RECORDS |
| C.R. | DENOTES CORNER RECORD |
| (M) | MEASURED DISTANCE. ALL DISTANCES ARE MEASURED UNLESS NOTED OTHERWISE. |