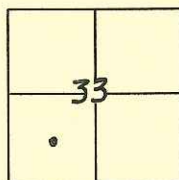


CORNER RECORD

Electronic File Number Document Number CR-12-29City of County of San Joaquin, CaliforniaBrief Legal Description Lot 14 of St John-Thornton Subd. 6 M&P 1T. 1 S., R. 9 E.
M. D. M.**CORNER TYPE**

Government Corner	<input type="checkbox"/>	Control	<input type="checkbox"/>
Meander	<input type="checkbox"/>	Property	<input checked="" type="checkbox"/>
Rancho	<input type="checkbox"/>	Other	<input type="checkbox"/>

Date of Survey August 31, 2011**COORDINATES(Optional)**

N.
E.
Zone NAD27 ☐ NAD83 ☐
NAD83 Epoch
Elev.
Vert. Datum: NGVD29 ☐ NADV88 ☐
Meas. Units: Metric ☐ Imperial ☐

Corner - Left as found ☐ Found and tagged ☐ Established ☐ Reestablished ☒ Rebuilt ☐

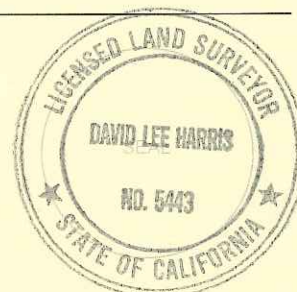
Identification and type of corner found: Evidence used to identify or procedure used to establish or reestablish the corner:

I found several monuments from record maps and also a couple of monuments that are not shown of record. The Monuments fit existing mapping well and produce no significant discrepancy to measurements shown on the original Subd. Plat.

A description of the physical condition of the monument as found and as set or reset: I set 1" x 30" iron pipes L.S.5443 at the locations shown on the accompanying plat. The front corners of Lot 14 were set on the 20-foot right-of-way line of Deck road. There were NO property line encroachments at the time of the survey.

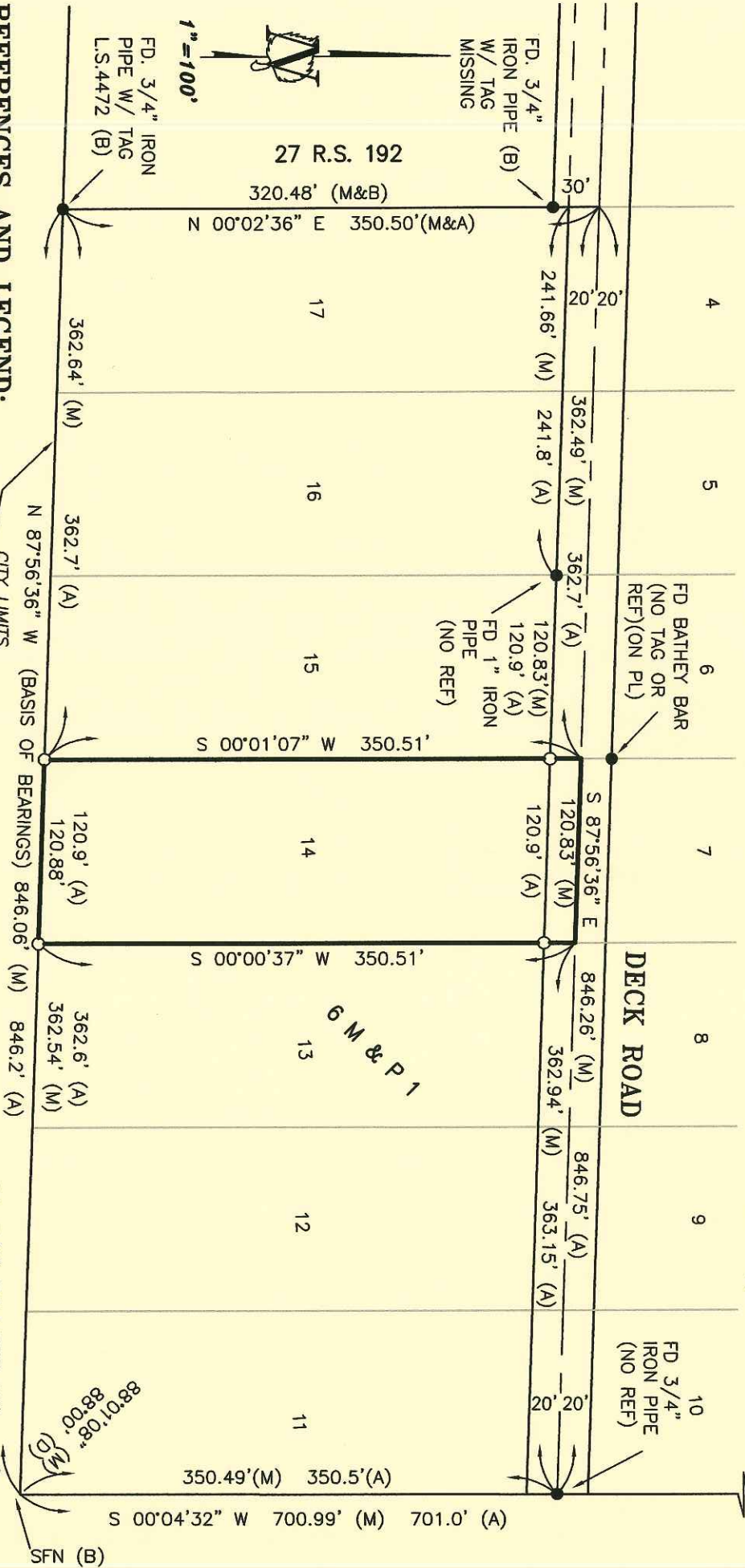
SURVEYOR'S STATEMENT

This Corner Record was prepared by me or under my direction in conformance with

the Land Surveyor's Act on September 23, 2011.Signed David Lee Harris P.L.S. or R.C.E. No.: L.S.5443**COUNTY SURVEYOR'S STATEMENT**This Corner Record was received JANUARY 17, 2012 and examinedand filed JANUARY 26, 2012.Signed Jeff D. Lund P.L.S. or R.C.E. No.: 4440Title ASSISTANT COUNTY SURVEYORCounty Surveyor's Comment 

MAHON AVENUE

FD 8"x8" POST W/ 3/4"
REBAR & CAP L.S.3344 (E)



REFERENCES AND LEGEND:

REFERENCES ARE SAN JOAQUIN COUNTY

- (A) VOLUME 6, MAPS AND PLATS, PAGE 1
- (B) BOOK 27 OF SURVEYS, PAGE 192
- (C) BOOK 32 OF MAPS AND PLATS, PAGE 66
- (D) VOLUME 4 OF SURVEYS, PAGE 188
- (E) BOOK 22 OF PARCEL MAPS, PAGE 7
- SET 1" X 30" IRON PIPE & TAG L.S. 5443
- MONUMENT FOUND AS NOTED
- (M) MEASURED
- (F) FOUND
- (REF) DENOTES: REFERENCE

CORNER RECORD PLAT

for
JOE DAVIS

LOT 14 OF ST. JOHN-THORNTON SUBD.
ACCORDING TO THE MAP FILED IN VOLUME 6
OF MAPS AND PLATS, AT PAGE 1, SAN
JOAQUIN COUNTY RECORDS, AND LYING IN
SECTION 33, T. 1 S., R. 9 E., MOUNT DIABLO
MERIDIAN, SAN JOAQUIN COUNTY CALIFORNIA
AUGUST, 2011

BASIS OF BEARINGS:

NORTH 87°56'36" WEST FOR THE SOUTH
LINE OF ST. JOHN-THORNTON SUBDIVISION
AS SHOWN ON 32-M&P-66 FILED IN SAN
JOAQUIN COUNTY RECORDS

ASPEN SURVEY
COMPANY, INC.

1121 OAKDALE RD., STE. 6 MODESTO, CA 95356
PH: (209) 526-9724 FX: (209) 526-0172