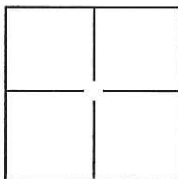


# CORNER RECORD

Document Number CR-12-28City of STOCKTONCounty of SAN JOAQUIN, CaliforniaBrief Legal Description PEBBLE BEACH DRIVE, M.&P. 32-32, SEC. 31, T.2N., R.6E., M.D.B.&M.**CORNER TYPE**

Government Corner	<input type="checkbox"/>	Control	<input type="checkbox"/>
Meander	<input type="checkbox"/>	Property	<input type="checkbox"/>
Rancho	<input type="checkbox"/>	Other	<input checked="" type="checkbox"/>

Date of Survey DECEMBER 15, 2011**COORDINATES(Optional)**

N. \_\_\_\_\_  
E. \_\_\_\_\_  
Zone \_\_\_\_\_ NAD27 ☐ NAD83 ☐  
NAD83 Epoch \_\_\_\_\_  
Elev. \_\_\_\_\_  
Vert. Datum: NGVD29 ☐ NADV88 ☐  
Meas. Units: Metric ☐ Imperial ☐

Corner - Left as found ☐ Found and tagged ☐ Established ☐ Reestablished ☒ Rebuilt ☐

Identification and type of corner found: Evidence used to identify or procedure used to establish or reestablish the corner:

SEE PLAT ON BACK

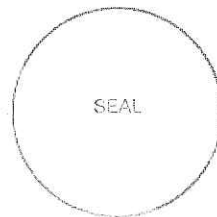
A description of the physical condition of the monument as found and as set or reset: \_\_\_\_\_

SET 3/4", 30" LONG REBAR WITH CAP ATTACHED AND STAMPED "LS 8247" IN MONUMENT WELL.**SURVEYOR'S STATEMENT**

This Corner Record was prepared by me or under my direction in conformance with

the Land Surveyor's Act on DECEMBER 19, 2011.Signed [Signature] P.L.S. or R.C.E. No.: 8247**COUNTY SURVEYOR'S STATEMENT**This Corner Record was received January 9, 2012 and examinedand filed February 5, 2012Signed [Signature] P.L.S. or R.C.E. No.: 26994Title County Surveyor

County Surveyor's Comment \_\_\_\_\_

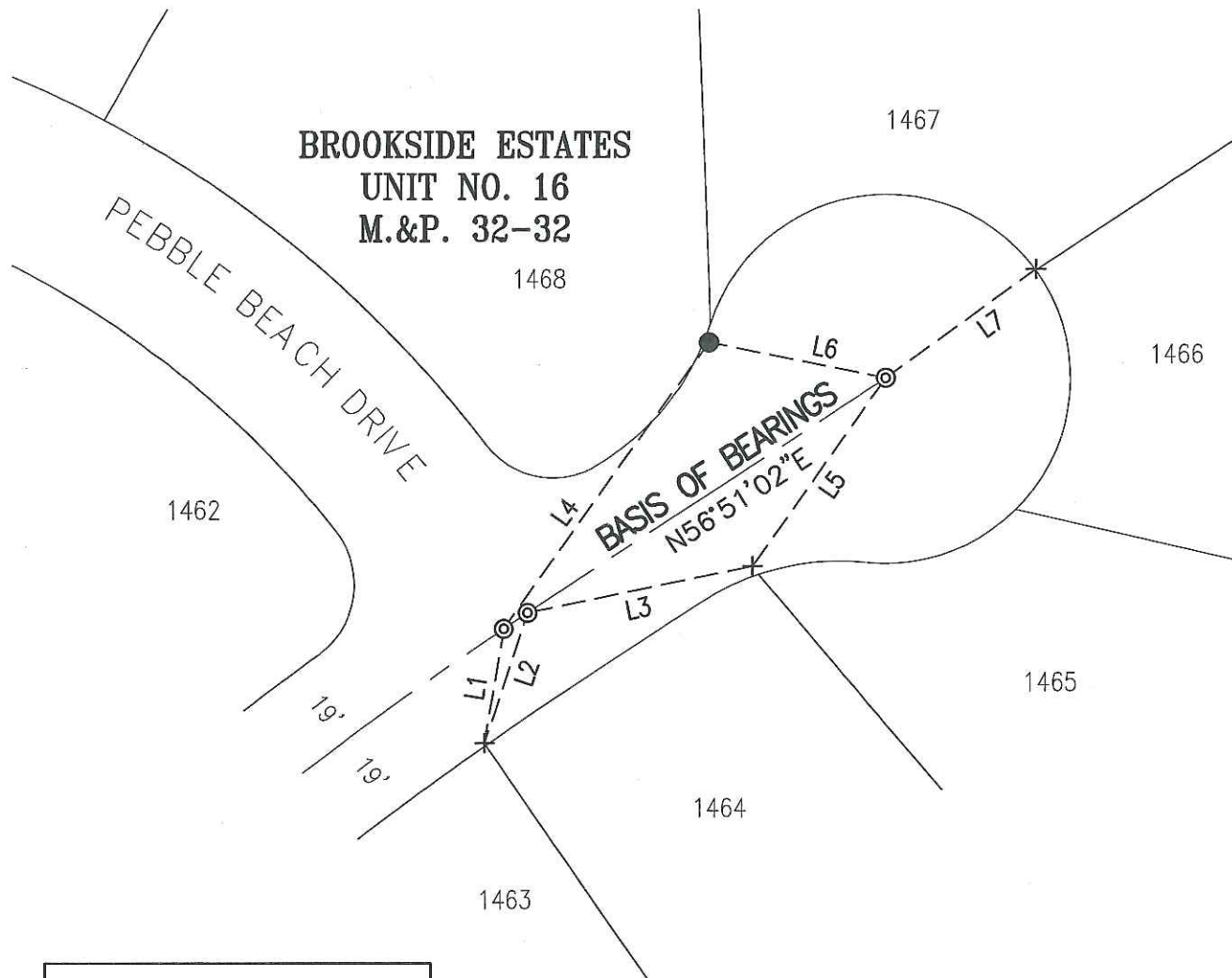


**LEGEND:**

- M.&P. BOOK OF MAPS AND PLATS, VOLUME-PAGE  
+ FOUND CHISELED CROSS ON 2' OFFSET PER M.&P. 32-32  
⊙ SET ¾" REBAR, 30" LONG W/CAP ATTACHED AND STAMPED "LS 8247" IN MONUMENT WELL  
● FOUND PK NAIL W/TAG STAMPED "LS 8092" PER CORNER RECORD CR 11-115

**BASIS OF BEARINGS:**

THE CENTERLINE OF PEBBLE BEACH DRIVE WHICH BEARS N56°51'02"E PER M.&P. 32-32



LINE TABLE		
LINE #	DIRECTION	LENGTH
L1	N9°31'37"E	25.63'
L2	N18°26'47"E	30.37'
L3	S78°22'11"W	51.00'
L4	S35°39'34"W	78.13'
L5	N35°26'20"E	51.25'
L6	S78°39'40"E	40.27'
L7	S54°02'17"W	41.03'

