

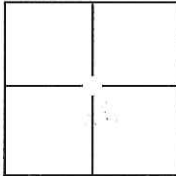
CORNER RECORD

Document Number CR-12-27

City of STOCKTON

County of SAN JOAQUIN, California

Brief Legal Description POPPY HILLS CIRCLE, M.&P. 34-52, SEC. 31, T.2N., R.6E., AND SEC. 1, T.1N., R.6E., M.D.B.&M.



CORNER TYPE

Government Corner ☐ Control ☐
Meander ☐ Property ☐
Rancho ☐ Other ☒

Date of Survey DECEMBER 15, 2011

COORDINATES(Optional)

N. _____

E. _____

Zone _____ NAD27 ☐ NAD83 ☐

NAD83 Epoch _____

Elev. _____

Vert. Datum: NGVD29 ☐ NADV88 ☐

Meas. Units: Metric ☐ Imperial ☐

Corner - Left as found ☐ Found and tagged ☐ Established ☐ Reestablished ☒ Rebuilt ☐

Identification and type of corner found: Evidence used to identify or procedure used to establish or reestablish the corner:

SEE PLAT ON BACK

A description of the physical condition of the monument as found and as set or reset: SET 3/4", 30" LONG REBAR WITH CAP ATTACHED AND STAMPED "LS 8247" IN MONUMENT WELL.

SURVEYOR'S STATEMENT

This Corner Record was prepared by me or under my direction in conformance with the Land Surveyor's Act on DECEMBER 19, 2011.

Signed [Signature] P.L.S. or R.C.E. No.: 8247



COUNTY SURVEYOR'S STATEMENT

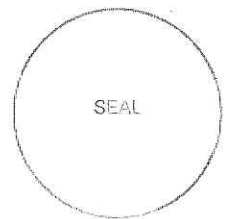
This Corner Record was received January 9, 2012 and examined

and filed February 5, 2012.

Signed Thomas M. Jan P.L.S. or R.C.E. No.: 26994

Title County Surveyor

County Surveyor's Comment _____

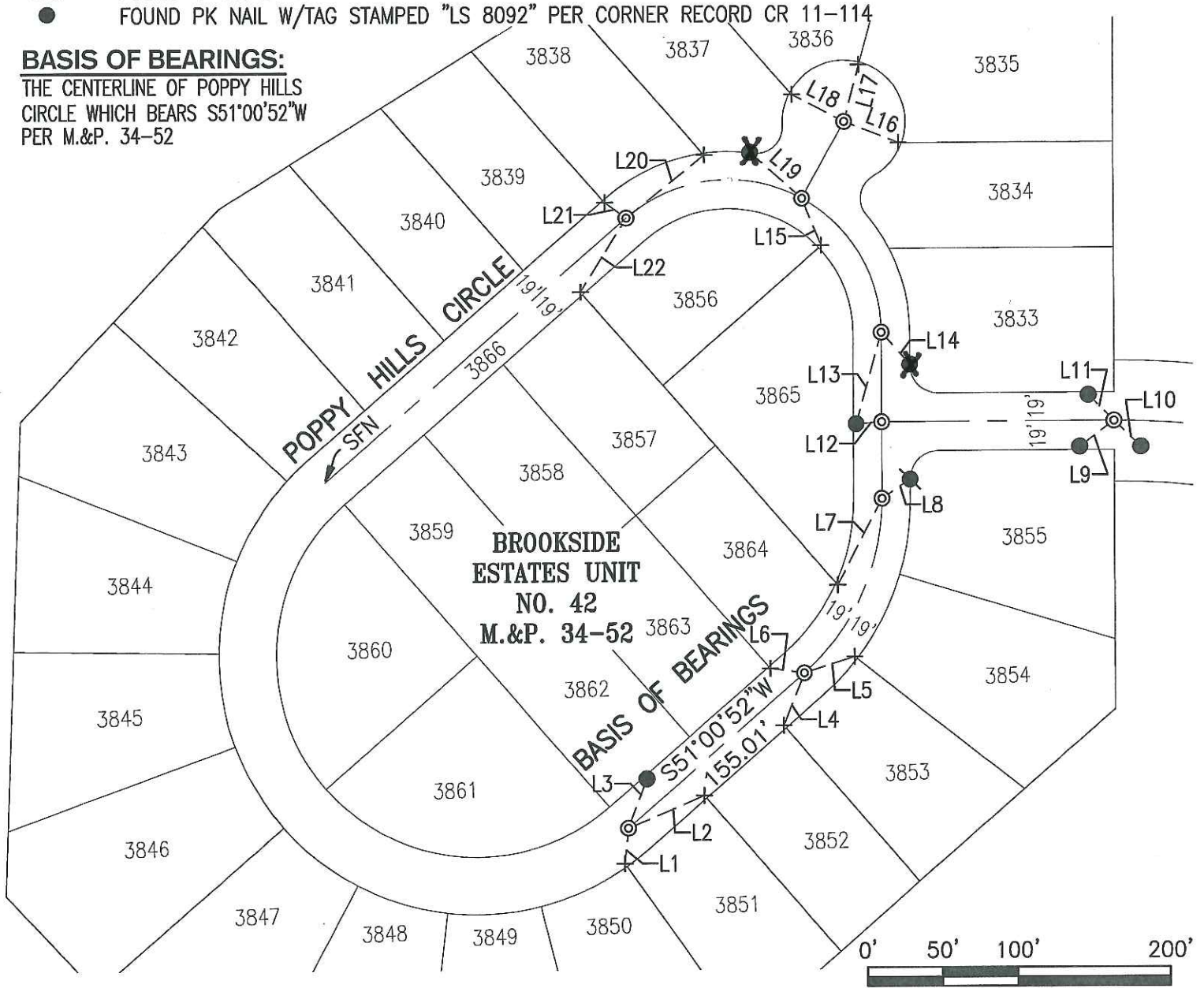


LEGEND:

- M.&P. BOOK OF MAPS AND PLATS, VOLUME--PAGE
- + FOUND CHISELED CROSS ON 2' OFFSET PER M.&P. 34-52
- ⊙ SET 3/4" REBAR, 30" LONG W/CAP ATTACHED AND STAMPED "LS 8247" IN MONUMENT WELL
- FOUND 3/4" REBAR W/CAP ATTACHED AND STAMPED "LS 4334" PER M.&P. 34-52
- ⊗ FOUND 1" BRASS DISK STAMPED "LS 4334" IN CONCRETE
- FOUND PK NAIL W/TAG STAMPED "LS 8092" PER CORNER RECORD CR 11-114

BASIS OF BEARINGS:

THE CENTERLINE OF POPPY HILLS
CIRCLE WHICH BEARS S51°00'52"W
PER M.&P. 34-52



LINE TABLE		
LINE #	DIRECTION	LENGTH
L1	N7°49'40"E	23.63'
L2	S69°11'26"W	54.66'
L3	S22°39'29"W	34.80'
L4	N23°43'33"E	37.21'
L5	S74°26'32"W	35.09'
L6	S80°17'43"E	22.75'
L7	N29°40'27"E	64.13'
L8	S58°27'05"W	22.70'

LINE TABLE		
LINE #	DIRECTION	LENGTH
L9	N54°59'23"E	28.25'
L10	N43°24'13"W	24.52'
L11	S42°34'30"E	24.05'
L12	N88°03'58"E	17.05'
L13	N17°44'08"E	62.69'
L14	N39°56'25"W	28.51'
L15	N20°03'40"W	33.62'
L16	N66°44'44"W	39.14'

LINE TABLE		
LINE #	DIRECTION	LENGTH
L17	S16°52'02"W	39.06'
L18	S60°06'43"E	39.22'
L19	S46°05'43"E	46.15'
L20	S53°21'58"W	66.39'
L21	S51°09'22"E	17.49'
L22	N33°44'13"E	57.29'

SCALE: 1"=100'

