

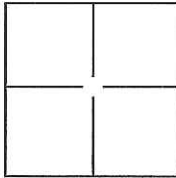
# CORNER RECORD

Document Number CR-12-23

City of STOCKTON

County of SAN JOAQUIN, California

Brief Legal Description PEBBLE BEACH DRIVE, M.&P. 32-85, SEC. 31, T.2N., R.6E., M.D.B.&M.



## CORNER TYPE

Government Corner ☐ Control ☐  
Meander ☐ Property ☐  
Rancho ☐ Other ☒

Date of Survey DECEMBER 12, 2011

## COORDINATES(Optional)

N. \_\_\_\_\_

E. \_\_\_\_\_

Zone \_\_\_\_\_ NAD27 ☐ NAD83 ☐

NAD83 Epoch \_\_\_\_\_

Elev. \_\_\_\_\_

Vert. Datum: NGVD29 ☐ NADV88 ☐

Meas. Units: Metric ☐ Imperial ☐

Corner - Left as found ☐ Found and tagged ☐ Established ☐ Reestablished ☒ Rebuilt ☐

Identification and type of corner found: Evidence used to identify or procedure used to establish or reestablish the corner:

SEE PLAT ON BACK

A description of the physical condition of the monument as found and as set or reset: \_\_\_\_\_

SET 3/4", 30" LONG REBAR WITH CAP ATTACHED AND STAMPED "LS 8247" IN MONUMENT WELL.

## SURVEYOR'S STATEMENT

This Corner Record was prepared by me or under my direction in conformance with

the Land Surveyor's Act on DECEMBER 19, 2011.

Signed [Signature] P.L.S. or R.C.E. No.: 8247



## COUNTY SURVEYOR'S STATEMENT

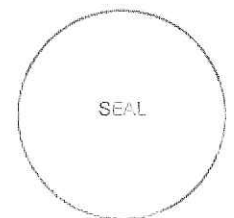
This Corner Record was received January 9, 2012 and examined

and filed February 5, 2012

Signed [Signature] P.L.S. or R.C.E. No.: 26994

Title County Surveyor

County Surveyor's Comment \_\_\_\_\_



## LEGEND:

M.&P. BOOK OF MAPS AND PLATS, VOLUME-PAGE

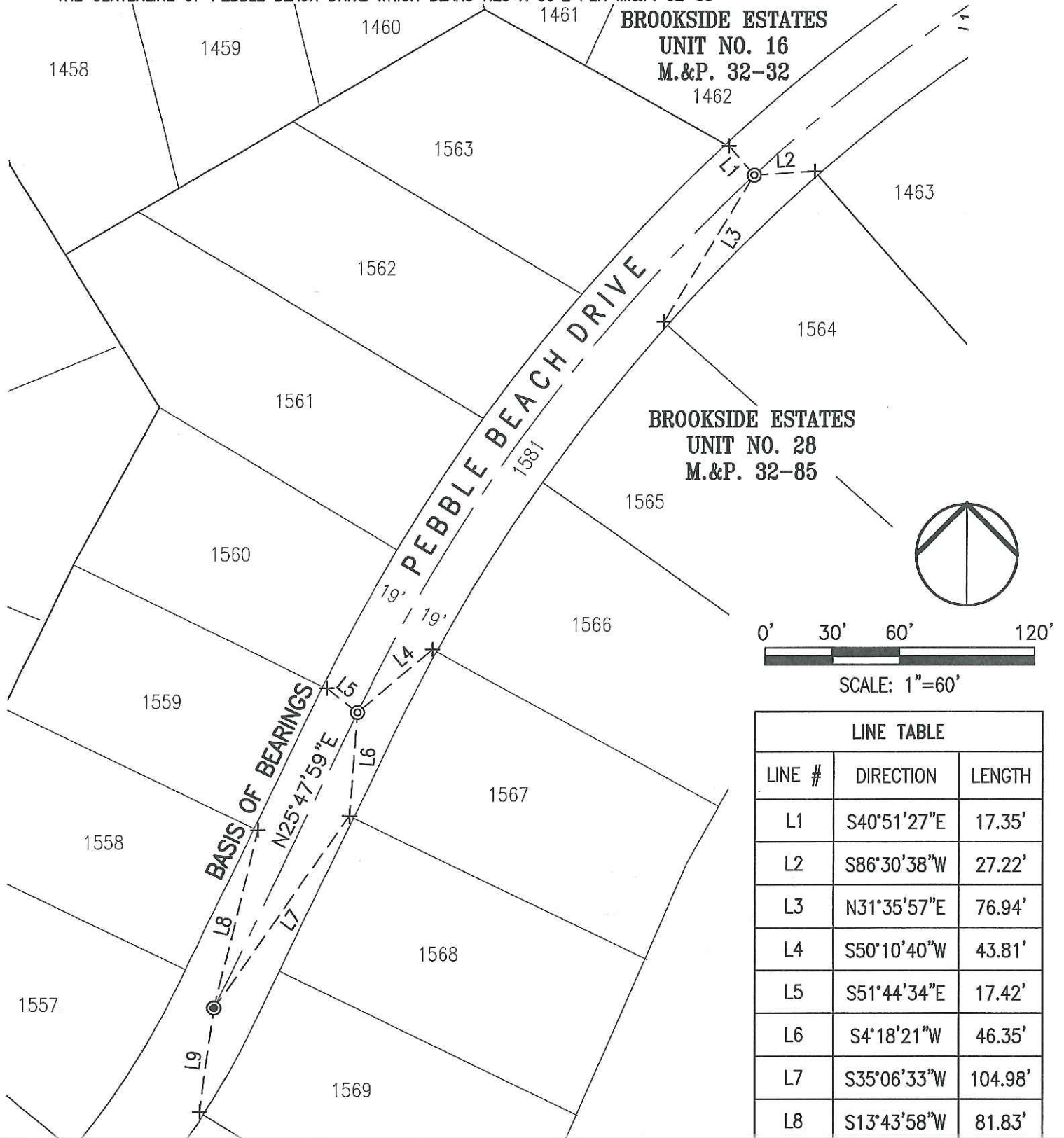
+ FOUND CHISELED CROSS ON 2' OFFSET PER M.&P. 32-85 AND C.R. 11-111

⊙ SET ¾" REBAR, 30" LONG W/CAP ATTACHED AND STAMPED "LS 8247" IN MONUMENT WELL

⊙ FOUND ¾" REBAR W/CAP ATTACHED AND STAMPED "LS 4334" IN MONUMENT WELL, NOT DISTURBED

## BASIS OF BEARINGS:

THE CENTERLINE OF PEBBLE BEACH DRIVE WHICH BEARS N25°47'59"E PER M.&P. 32-85



LINE TABLE		
LINE #	DIRECTION	LENGTH
L1	S40°51'27"E	17.35'
L2	S86°30'38"W	27.22'
L3	N31°35'57"E	76.94'
L4	S50°10'40"W	43.81'
L5	S51°44'34"E	17.42'
L6	S4°18'21"W	46.35'
L7	S35°06'33"W	104.98'
L8	S13°43'58"W	81.83'
L9	N7°43'18"E	46.57'