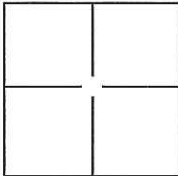


CORNER RECORD

Document Number

CR-12-22City of STOCKTONCounty of SAN JOAQUIN, CaliforniaBrief Legal Description ST. ANDREWS DRIVE, M.&P. 35-72, SEC. 36, T.2N., R.5E., M.D.B.&M.**CORNER TYPE**

Government Corner ☐ Control ☐
Meander ☐ Property ☐
Rancho ☐ Other ☒

Date of Survey DECEMBER 12, 2011**COORDINATES(Optional)**

N. _____
E. _____
Zone _____ NAD27 ☐ NAD83 ☐
NAD83 Epoch _____
Elev. _____
Vert. Datum: NGVD29 ☐ NADV88 ☐
Meas. Units: Metric ☐ Imperial ☐

Corner - Left as found ☐ Found and tagged ☐ Established ☐ Reestablished ☒ Rebuilt ☐

Identification and type of corner found: Evidence used to identify or procedure used to establish or reestablish the corner:

SEE PLAT ON BACK

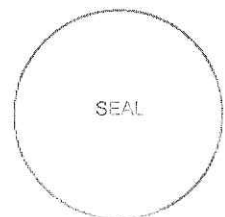
A description of the physical condition of the monument as found and as set or reset: _____

SET 3/4", 30" LONG REBAR WITH CAP ATTACHED AND STAMPED "LS 8247" IN MONUMENT WELL.**SURVEYOR'S STATEMENT**

This Corner Record was prepared by me or under my direction in conformance with

the Land Surveyor's Act on DECEMBER 19, 2011.Signed  P.L.S. or R.C.E. No.: 8247**COUNTY SURVEYOR'S STATEMENT**This Corner Record was received January 9, 2012 and examinedand filed February 5, 2012.Signed Thomas M. Han P.L.S. or R.C.E. No.: 26994Title County Surveyor

County Surveyor's Comment _____



LEGEND:

M.&P. BOOK OF MAPS AND PLATS, VOLUME-PAGE

+ FOUND CHISELED CROSS ON 2' OFFSET PER M.&P. 35-72

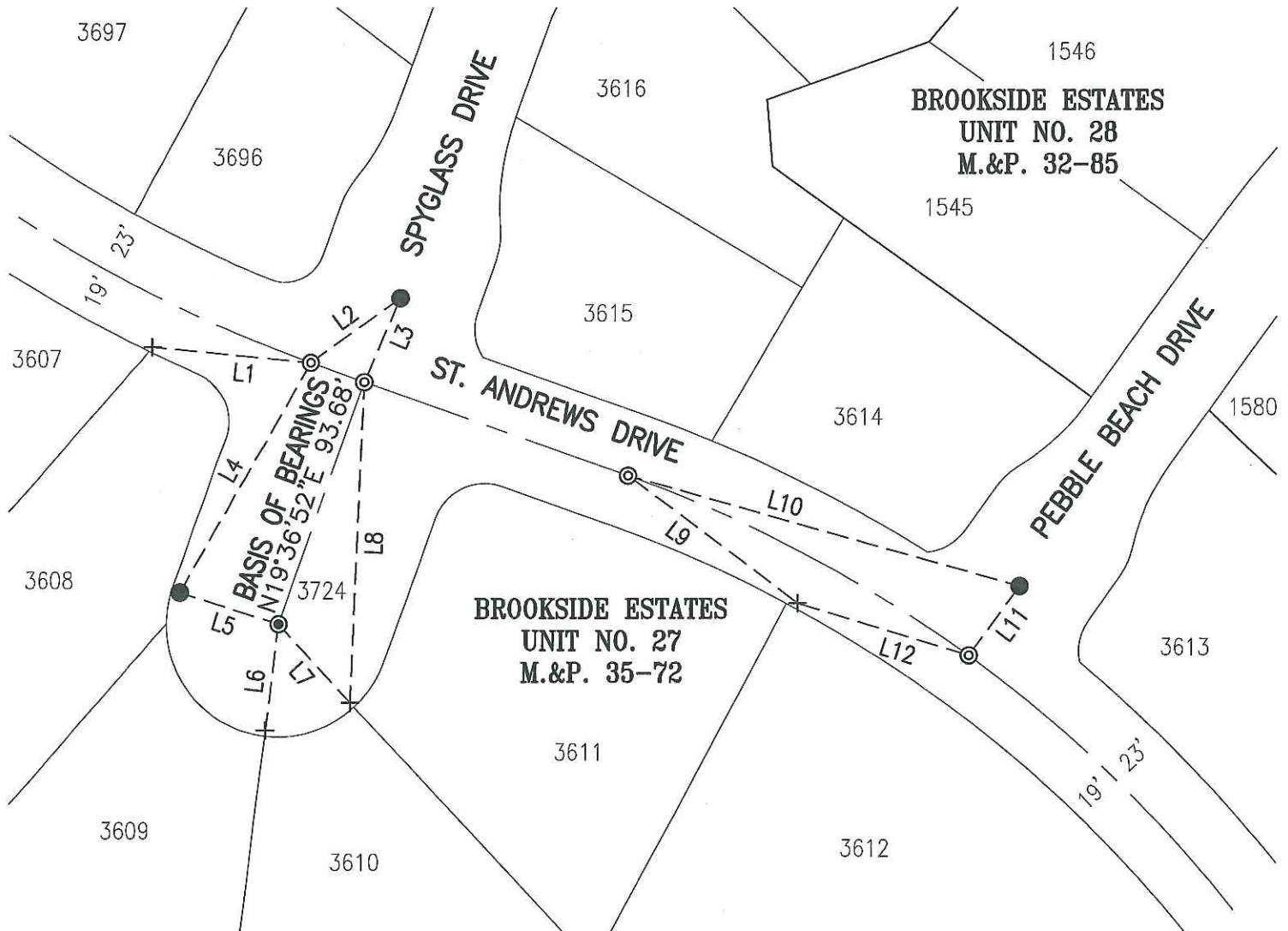
⊙ SET ¾" REBAR, 30" LONG W/CAP ATTACHED AND STAMPED "LS 8247" IN MONUMENT WELL

● FOUND PK NAIL W/TAG STAMPED "LS 8092" PER CORNER RECORD CR-11-107

⊙ FOUND ¾" REBAR W/ CAP ATTACHED AND STAMPED "LS 4334" IN MONUMENT WELL, NOT DISTURBED

BASIS OF BEARINGS:

THE CENTERLINE OF SPYGLASS DRIVE WHICH BEARS N19°36'52"E PER M.&P. 35-72



LINE TABLE

LINE #	DIRECTION	LENGTH
L1	S84°20'03"E	58.18'
L2	S54°06'59"W	40.21'
L3	S22°55'53"W	33.29'
L4	N29°45'15"E	96.45'
L5	S72°09'47"E	37.85'
L6	N7°03'00"E	38.98'

LINE TABLE

LINE #	DIRECTION	LENGTH
L7	N42°52'04"W	39.04'
L8	N2°23'43"E	116.96'
L9	N53°20'21"W	77.81'
L10	N74°15'47"W	148.72'
L11	S36°14'59"W	31.31'
L12	S72°54'25"E	65.09'



SCALE: 1"=60'