

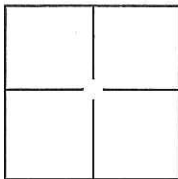
CORNER RECORD

Document Number CR-12-16

City of STOCKTON

County of SAN JOAQUIN, California

Brief Legal Description BAY VIEW CIRCLE, MARITIME COURT AND SHORELAKE COURT, M.&P. 34-93,
SEC. 31, T.2N., R.6E., M.D.B.&M.



CORNER TYPE

Government Corner ☐ Control ☐
Meander ☐ Property ☐
Rancho ☐ Other ☒

Date of Survey NOVEMBER 22, 2011

COORDINATES(Optional)

N. _____
E. _____
Zone _____ NAD27 ☐ NAD83 ☐
NAD83 Epoch _____
Elev. _____
Vert. Datum: NGVD29 ☐ NADV88 ☐
Meas. Units: Metric ☐ Imperial ☐

Corner - Left as found ☐ Found and tagged ☐ Established ☐ Reestablished ☒ Rebuilt ☐

Identification and type of corner found: Evidence used to identify or procedure used to establish or reestablish the corner:

SEE PLAT ON BACK

A description of the physical condition of the monument as found and as set or reset: _____

SET 3/4", 30" LONG REBAR WITH CAP ATTACHED AND STAMPED "LS 8247" IN MONUMENT WELL.

SURVEYOR'S STATEMENT

This Corner Record was prepared by me or under my direction in conformance with
the Land Surveyor's Act on DECEMBER 19, 2011.

Signed [Signature] P.L.S. or R.G.E. No.: 8247



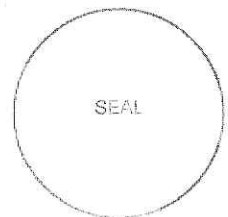
COUNTY SURVEYOR'S STATEMENT

This Corner Record was received January 9, 2012 and examined
and filed FEBRUARY 6, 2012.

Signed [Signature] P.L.S. or R.C.E. No.: 26994

Title County Surveyor

County Surveyor's Comment _____

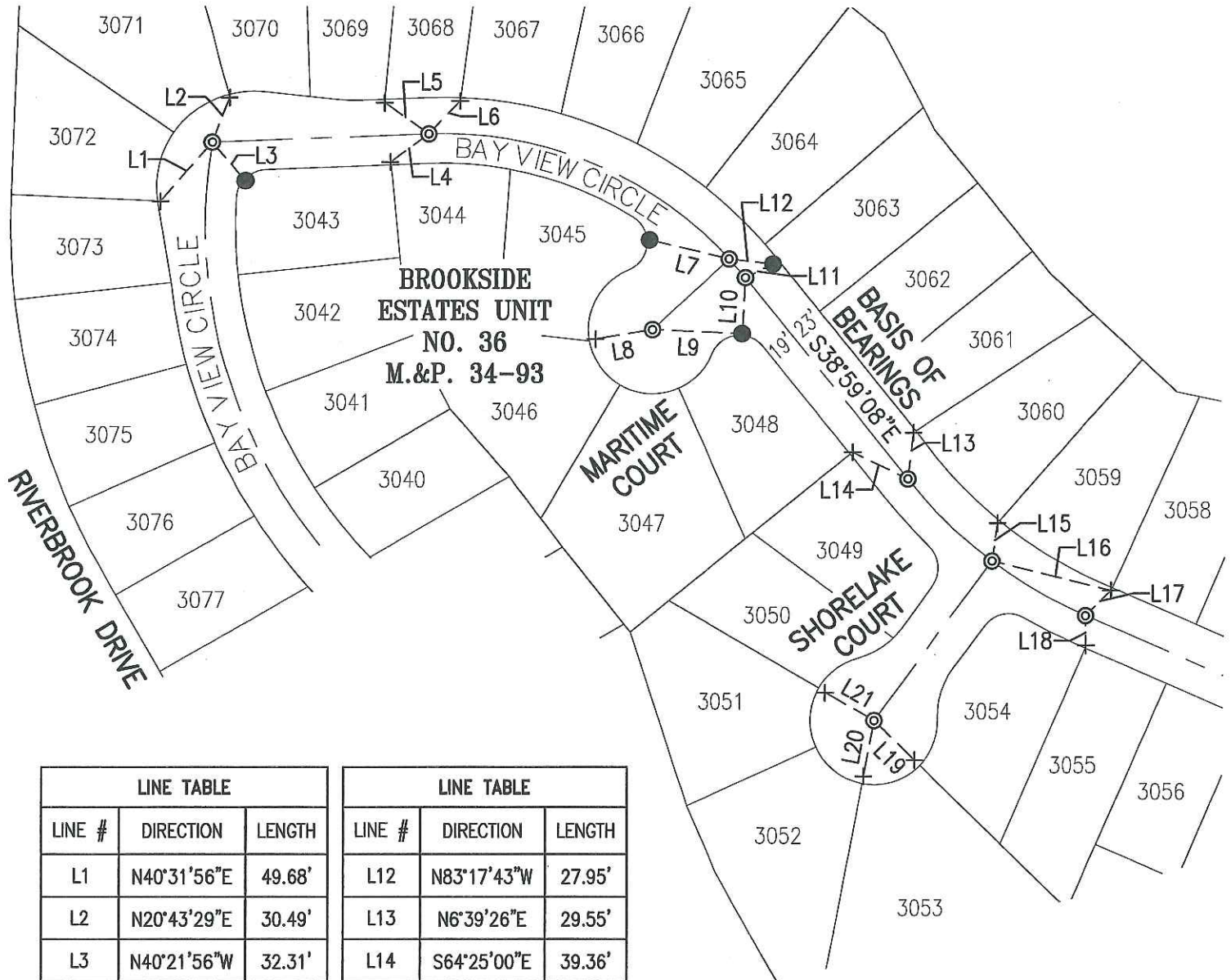


LEGEND:

- M.&P. BOOK OF MAPS AND PLATS, VOLUME-PAGE
 + FOUND CHISELED CROSS PER M.&P. 34-93
 ⊙ SET ¾" REBAR, 30" LONG W/CAP ATTACHED AND STAMPED "LS 8247" IN MONUMENT WELL
 ● FOUND PK NAIL W/TAG STAMPED "LS 8092" PER CORNER RECORD CR 11-119

BASIS OF BEARINGS:

THE CENTERLINE OF BAY VIEW CIRCLE WHICH BEARS S38°59'08"E PER M.&P. 34-93



LINE TABLE		
LINE #	DIRECTION	LENGTH
L1	N40°31'56"E	49.68'
L2	N20°43'29"E	30.49'
L3	N40°21'56"W	32.31'
L4	N54°07'53"E	30.58'
L5	N55°01'25"W	34.75'
L6	S43°18'28"W	28.91'
L7	N76°37'03"W	52.56'
L8	N80°39'10"E	36.89'
L9	S87°28'43"E	57.40'
L10	N3°08'59"E	35.70'
L11	N63°31'01"E	19.45'

LINE TABLE		
LINE #	DIRECTION	LENGTH
L12	N83°17'43"W	27.95'
L13	N6°39'26"E	29.55'
L14	S64°25'00"E	39.36'
L15	S8°20'27"W	24.25'
L16	N76°09'32"W	78.24'
L17	N44°59'58"E	22.65'
L18	N0°56'47"W	18.85'
L19	N45°39'37"W	36.11'
L20	S10°57'57"W	36.18'
L21	S60°18'04"E	35.99'

