

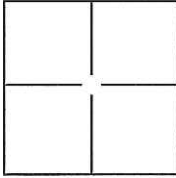
CORNER RECORD

Document Number CR-12-12

City of STOCKTON

County of SAN JOAQUIN, California

Brief Legal Description BROOK HOLLOW CIRCLE AND BROOK MEADOW COURT, M.&P. 32-98,
SEC. 30, T.2N., R.6E., M.D.B.&M.



CORNER TYPE

Government Corner ☐ Control ☐
Meander ☐ Property ☐
Rancho ☐ Other ☒

Date of Survey DECEMBER 05, 2011

COORDINATES(Optional)

N. _____
E. _____
Zone _____ NAD27 ☐ NAD83 ☐
NAD83 Epoch _____
Elev. _____
Vert. Datum: NGVD29 ☐ NADV88 ☐
Meas. Units: Metric ☐ Imperial ☐

Corner - Left as found ☐ Found and tagged ☐ Established ☐ Reestablished ☒ Rebuilt ☐

Identification and type of corner found: Evidence used to identify or procedure used to establish or reestablish the corner:
SEE PLAT ON BACK

A description of the physical condition of the monument as found and as set or reset: _____

SET 3/4", 30" LONG REBAR WITH CAP ATTACHED AND STAMPED "LS 8247" IN MONUMENT WELL.

SURVEYOR'S STATEMENT

This Corner Record was prepared by me or under my direction in conformance with

the Land Surveyor's Act on DECEMBER 19, 2011.

Signed [Signature] P.L.S. or R.C.E. No.: 8247



COUNTY SURVEYOR'S STATEMENT

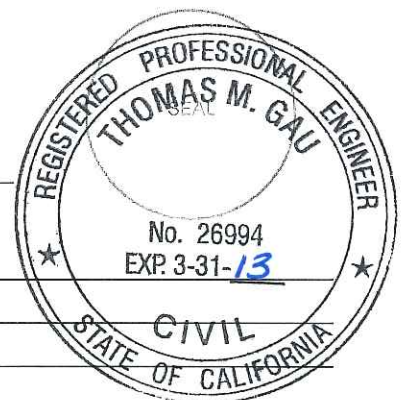
This Corner Record was received January 9, 2012 and examined

and filed February 8, 2012.

Signed Thomas M. Gau P.L.S. or R.C.E. No.: 26994

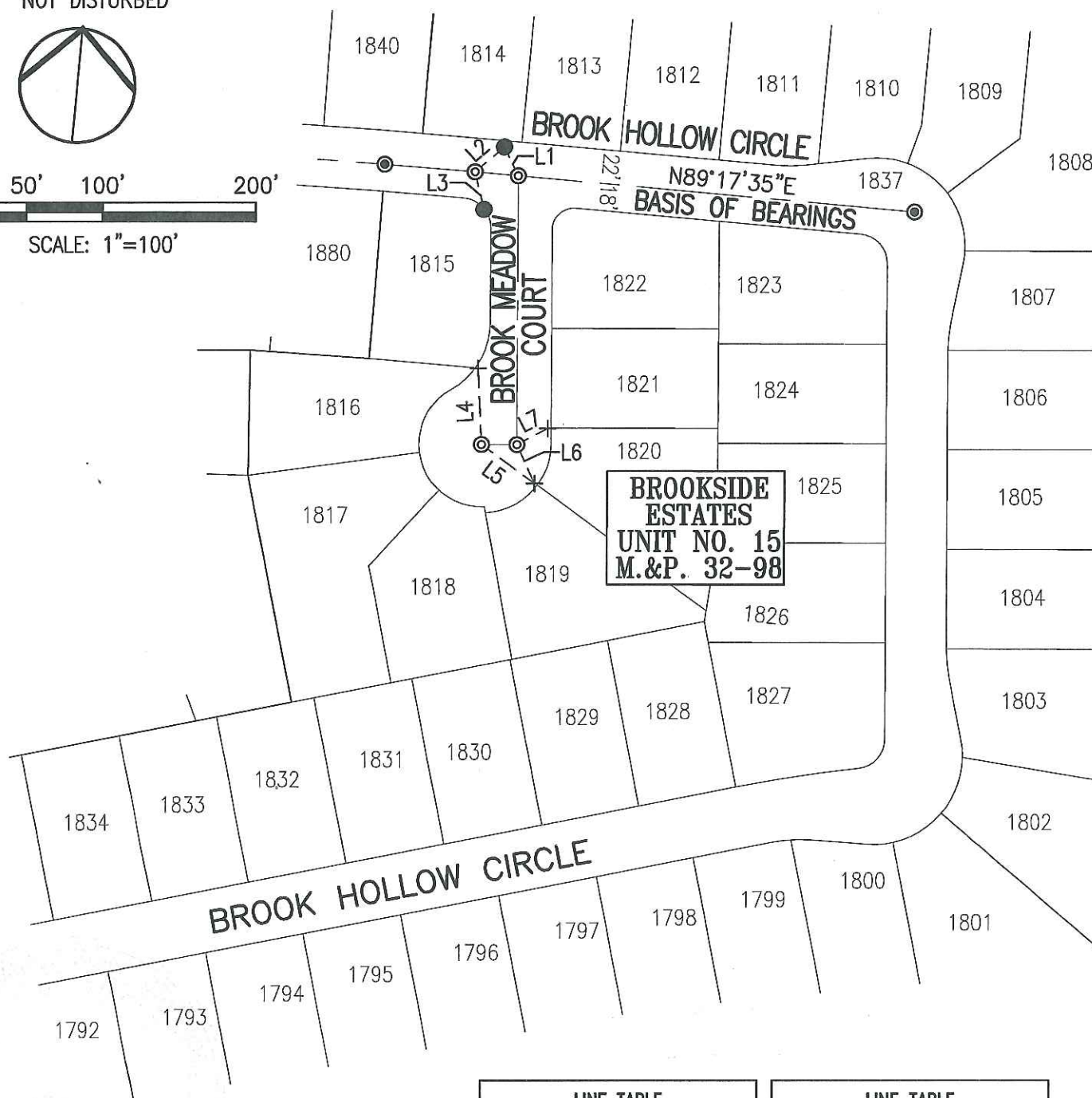
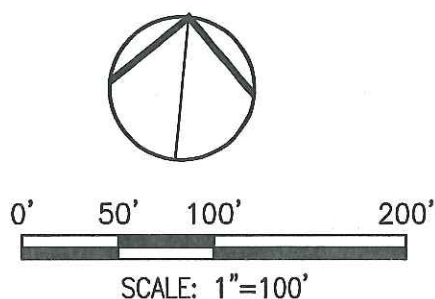
Title County Surveyor

County Surveyor's Comment _____



LEGEND:

- M.&P. BOOK OF MAPS AND PLATS, VOLUME-PAGE
SFN SEARCHED, FOUND NOTHING
+ FOUND CHISELED CROSS PER M.&P. 32-98
⊙ SET 3/4" REBAR, 30" LONG W/CAP ATTACHED AND STAMPED "LS 8247" IN MONUMENT WELL
● FOUND PK NAIL W/TAG STAMPED "PLS 8092" PER CORNER RECORD CR 11-172
⊙ FOUND 3/4" REBAR W/CAP ATTACHED AND STAMPED "LS 4334" IN MONUMENT WELL
NOT DISTURBED



BASIS OF BEARINGS:

THE CENTERLINE OF BROOK HOLLOW CIRCLE
WHICH BEARS N89°17'35"E PER M.&P. 32-98

LINE TABLE		
LINE #	DIRECTION	LENGTH
L1	S31°36'10"E	21.04'
L2	S43°14'12"W	25.08'
L3	N19°11'35"W	25.23'
L4	S8°33'34"E	49.84'

LINE TABLE		
LINE #	DIRECTION	LENGTH
L5	N59°30'47"W	43.00'
L6	N30°24'08"W	27.94'
L7	S56°06'18"W	22.62'