

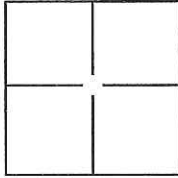
CORNER RECORD

Document Number CR-12-11

City of STOCKTON

County of SAN JOAQUIN, California

Brief Legal Description BROOK HOLLOW CIRCLE AND BROOK HOLLOW COURT, M.&P. 33-38,
SEC. 30, T.2N., R.6E., M.D.B.&M.



CORNER TYPE

Government Corner ☐ Control ☐
Meander ☐ Property ☐
Rancho ☐ Other ☒

Date of Survey DECEMBER 05, 2011

COORDINATES(Optional)

N. _____
E. _____
Zone _____ NAD27 ☐ NAD83 ☐
NAD83 Epoch _____
Elev. _____
Vert. Datum: NGVD29 ☐ NADV88 ☐
Meas. Units: Metric ☐ Imperial ☐

Corner - Left as found ☐ Found and tagged ☐ Established ☐ Reestablished ☒ Rebuilt ☐

Identification and type of corner found: Evidence used to identify or procedure used to establish or reestablish the corner:

SEE PLAT ON BACK

A description of the physical condition of the monument as found and as set or reset: _____

SET 3/4", 30" LONG REBAR WITH CAP ATTACHED AND STAMPED "LS 8247" IN MONUMENT WELL.

SURVEYOR'S STATEMENT

This Corner Record was prepared by me or under my direction in conformance with

the Land Surveyor's Act on DECEMBER 19, 2011.

Signed [Signature] P.L.S. or R.G.E. No.: 8247



COUNTY SURVEYOR'S STATEMENT

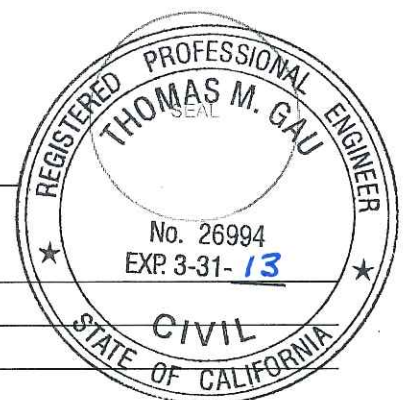
This Corner Record was received January 9, 2012 and examined

and filed February 8, 2012.

Signed Thomas M. Gau P.L.S. or R.C.E. No.: 26994

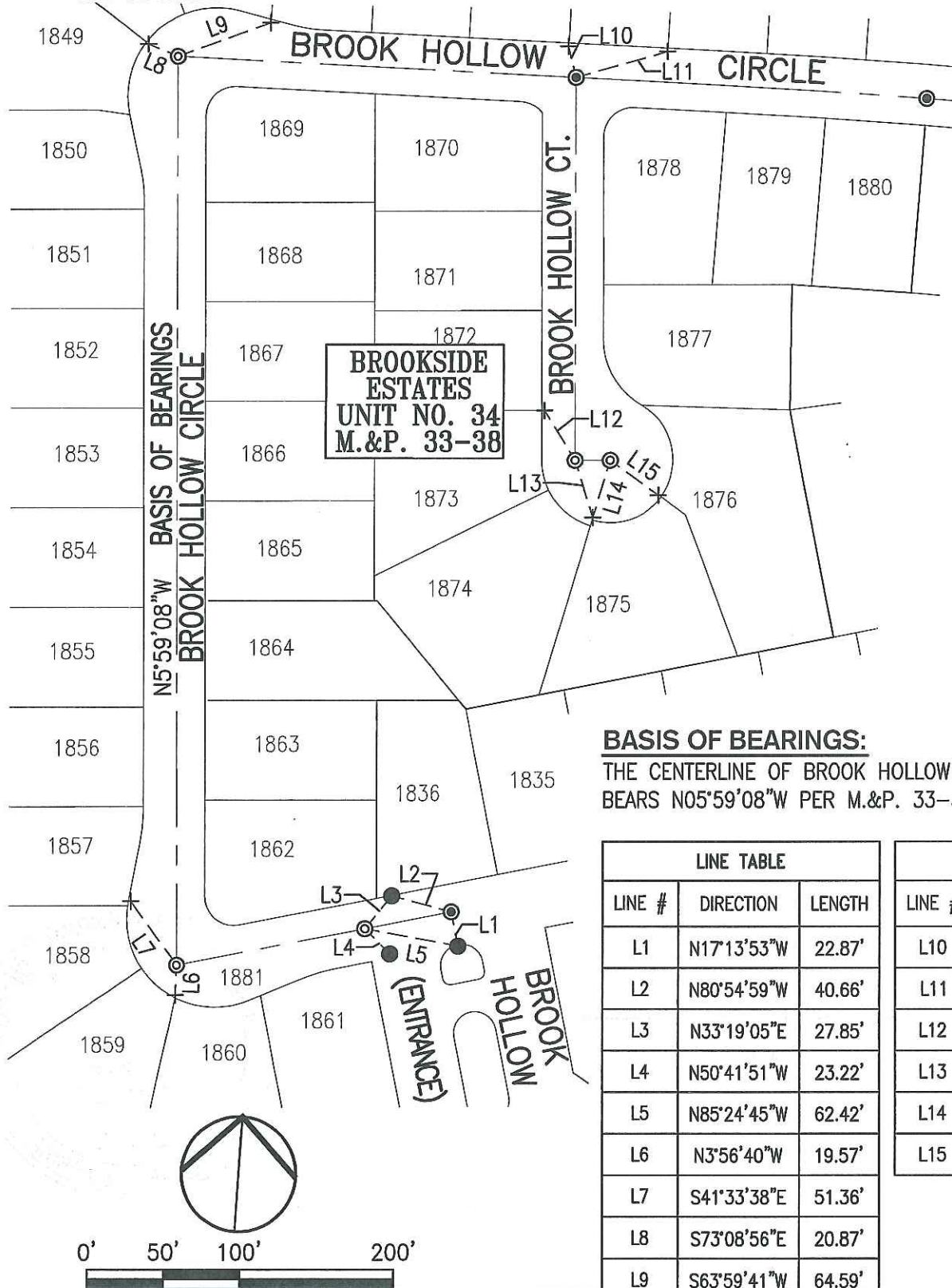
Title County Surveyor

County Surveyor's Comment _____



LEGEND:

- M.&P. BOOK OF MAPS AND PLATS, VOLUME--PAGE
 SFN SEARCHED, FOUND NOTHING
 + FOUND CHISELED CROSS PER M.&P. 33-38
 ⊙ SET 3/4", 30" LONG REBAR W/CAP ATTACHED AND STAMPED "LS 8247" IN MONUMENT WELL
 △ FOUND MONUMENT WELL W/2' STRADS, NO MONUMENT IN MONUMENT WELL
 ● FOUND PK NAIL W/TAG STAMPED "PLS 8092" PER CORNER RECORD CR 11-171
 ⊙ FOUND 3/4" REBAR W/CAP ATTACHED AND STAMPED "LS 4334" IN MONUMENT WELL,
 NOT DISTURBED



BASIS OF BEARINGS:

THE CENTERLINE OF BROOK HOLLOW CIRCLE WHICH BEARS N05°59'08"W PER M.&P. 33-38

LINE TABLE		
LINE #	DIRECTION	LENGTH
L1	N17°13'53"W	22.87'
L2	N80°54'59"W	40.66'
L3	N33°19'05"E	27.85'
L4	N50°41'51"W	23.22'
L5	N85°24'45"W	62.42'
L6	N3°56'40"W	19.57'
L7	S41°33'38"E	51.36'
L8	S73°08'56"E	20.87'
L9	S63°59'41"W	64.59'

LINE TABLE		
LINE #	DIRECTION	LENGTH
L10	S19°32'12"E	20.94'
L11	S68°18'16"W	62.31'
L12	S37°29'46"E	38.20'
L13	N23°25'12"W	39.07'
L14	N10°52'33"E	38.97'
L15	N60°01'50"W	39.02'

SCALE: 1"=100'