

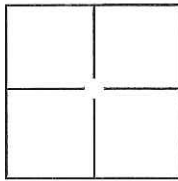
# CORNER RECORD

Document Number CR-12-08

City of STOCKTON

County of SAN JOAQUIN, California

Brief Legal Description VICTROLA DRIVE, M.&P. 36-45, SEC. 31, T.2N., R.6E., M.D.B.&M.



## CORNER TYPE

Government Corner ☐ Control ☐  
Meander ☐ Property ☐  
Rancho ☐ Other ☒

Date of Survey NOVEMBER 23, 2011

## COORDINATES(Optional)

N. \_\_\_\_\_  
E. \_\_\_\_\_  
Zone \_\_\_\_\_ NAD27 ☐ NAD83 ☐  
NAD83 Epoch \_\_\_\_\_  
Elev. \_\_\_\_\_  
Vert. Datum: NGVD29 ☐ NADV88 ☐  
Meas. Units: Metric ☐ Imperial ☐

Corner - Left as found ☐ Found and tagged ☐ Established ☐ Reestablished ☒ Rebuilt ☐

Identification and type of corner found: Evidence used to identify or procedure used to establish or reestablish the corner:

SEE PLAT ON BACK

A description of the physical condition of the monument as found and as set or reset: \_\_\_\_\_

SET 3/4", 30" LONG REBAR WITH CAP ATTACHED AND STAMPED "LS 8247" IN MONUMENT WELL.

## SURVEYOR'S STATEMENT

This Corner Record was prepared by me or under my direction in conformance with  
the Land Surveyor's Act on DECEMBER 19, 2011.

Signed [Signature] P.L.S. or R.C.E. No.: 8247

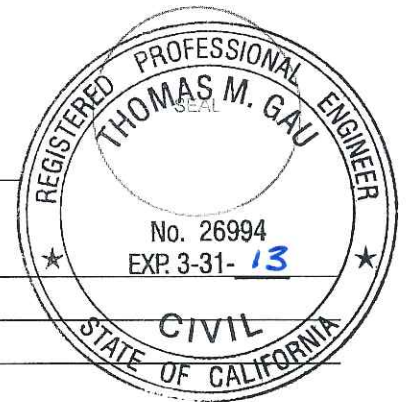


## COUNTY SURVEYOR'S STATEMENT

This Corner Record was received January 9, 2012 and examined  
and filed February 8, 2012

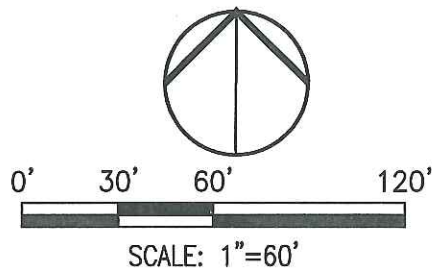
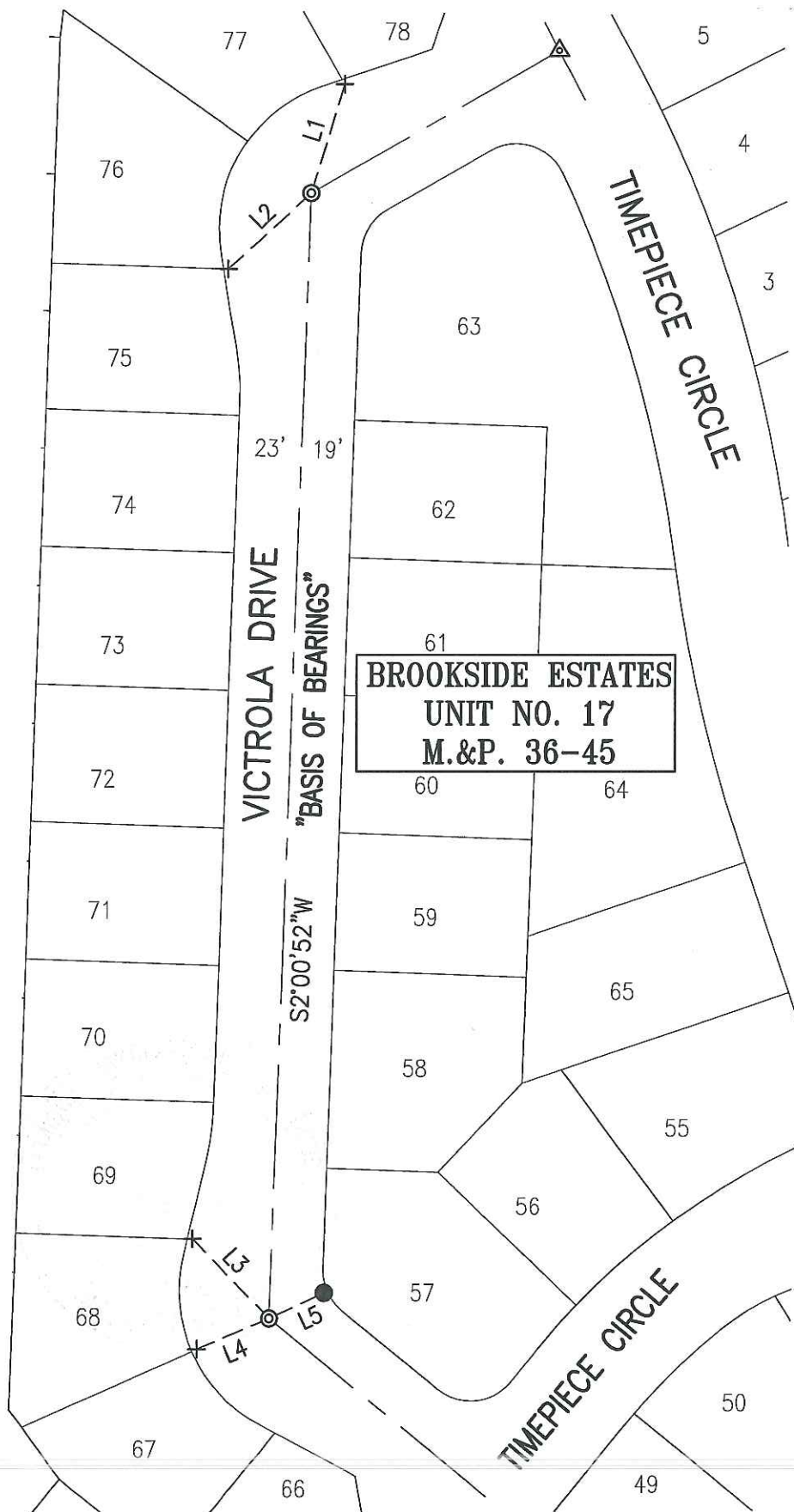
Signed Thomas M. Gau P.L.S. or R.C.E. No.: 26994

Title County Surveyor  
County Surveyor's Comment \_\_\_\_\_



# **LEGEND:**

- M.&P. BOOK OF MAPS AND PLATS, VOLUME-PAGE  
 + FOUND CHISELED CROSS PER M.&P. 36-45  
 ⊙ SET ¾", 30" LONG REBAR W/CAP ATTACHED AND STAMPED "PLS 8247" IN MONUMENT WELL.  
 △ FOUND MONUMENT WELL W/2' STRADS, NO MONUMENT IN MONUMENT WELL  
 ● FOUND PK NAIL W/TAG STAMPED "PLS 8092", PER CORNER RECORD CR 11-168



## **MONUMENT TIES:**

LINE TABLE		
LINE #	DIRECTION	LENGTH
L1	N17°01'06"E	41.62'
L2	S47°11'29"W	40.74'
L3	N43°47'50"W	40.16'
L4	S66°47'43"W	28.48'
L5	N65°08'01"E	22.12'

## **BASIS OF BEARINGS:**

THE CENTERLINE OF VICTROLA DRIVE WHICH BEARS S02°00'52"W PER M.&P. 36-45