

CORNER RECORD

Document Number

CR 11-224

City of RIPON

County of SAN JOAQUIN, California

Brief Legal Description PROPERTY CORNER APPROXIMATELY 1314'± NORTH ALONG THE SECTION LINE
FROM THE APPARENT SW CORNER OF SECTION 25, T.2S., R.7E., M.D.B.&M.

NW 1/4	NE 1/4
SW 1/4	SE 1/4

CORNER TYPE

Government Corner ☐ Control ☐
Meander ☐ Property ☒
Rancho ☐ Other ☐
Date of Survey 10-26-2011

COORDINATES (Optional)

N. _____
E. _____
Zone _____ NAD27 ☐ NAD83 ☐
NAD83 Epoch _____
Elev. _____
Vert. Datum: NGVD29 ☐ NAVD88 ☐
Meas. Units: Metric ☐ Imperial ☐

SEC.25 T2S, R7E

Corner - Left as found ☒ Found and tagged ☐ Established ☐ Reestablished ☐ Rebuilt ☐

Identification and type of corner found: Evidence used to identify or procedure used to establish or reestablished the corner:
FOUND 3/4" IRON PIPE NOT TAGGED, APPROXIMATELY 1314'± NORTH ALONG THE SECTION LINE
FROM THE APPARENT SW CORNER OF SECTION 25, T.2S., R.7E., M.D.B.&M. FOUND MONUMENT AS
SHOWN ON RECORD OF SURVEY FILED IN BOOK 12 OF SURVEYS AT PAGE 133, SAN JOAQUIN
COUNTY RECORDS.

A description of the physical condition of the monument as found and as set or reset: _____
MONUMENT IS IN AREA OF RECONSTRUCTION, SET TIES AS SHOWN ON PAGE 2.

This Corner Record was prepared by me or under my direction in conformance with the Land Surveyors' Act on DECEMBER 12, 2011.

Signed [Signature] L.S. 6953



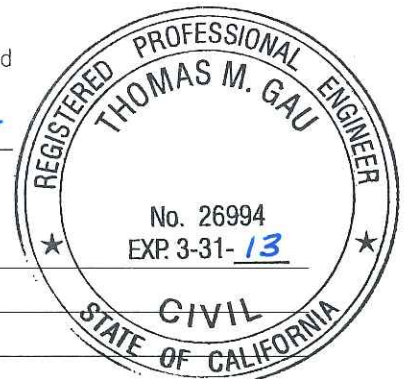
COUNTY SURVEYOR'S STATEMENT

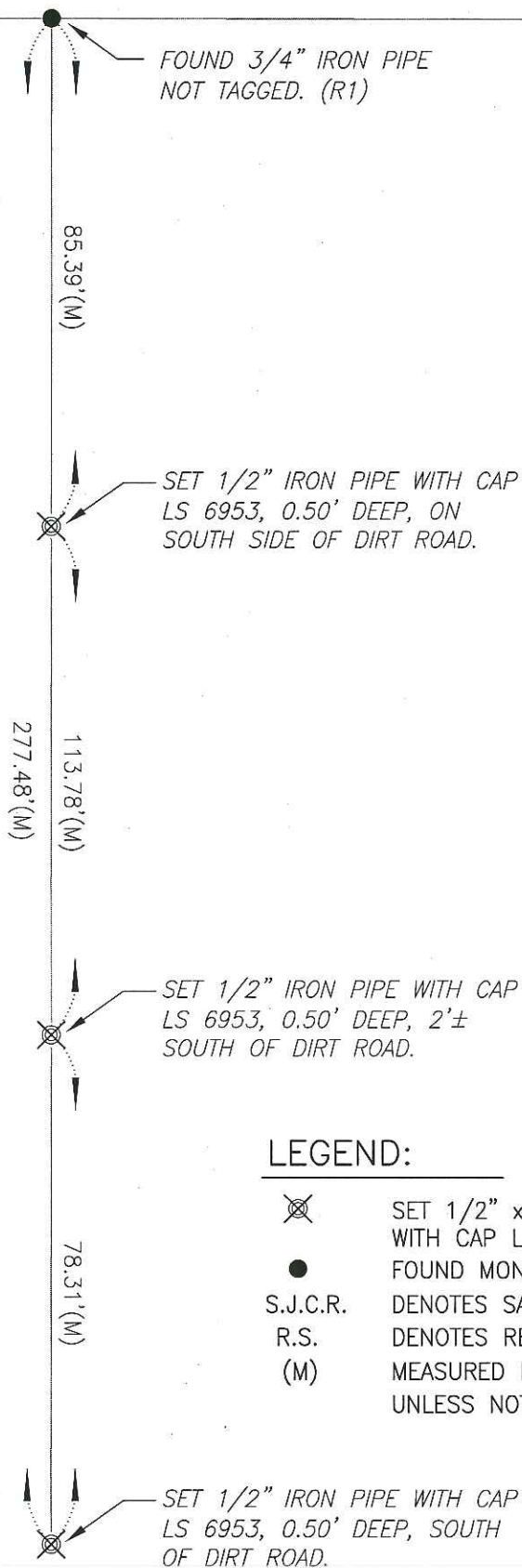
This Corner Record was received DECEMBER 15, 2011 and examined and filed DECEMBER 22, 2011.

Signed Thomas M. Gau P.L.S. or R.C.E. No. 26994

Title COUNTY SURVEYOR

County Surveyors Comment _____





REFERENCES:

(R1) R.S. 12-133, S.J.C.R.



LEGEND:

- | | |
|--|--|
| <p>⊗</p> <p>●</p> <p>S.J.C.R.</p> <p>R.S.</p> <p>(M)</p> | <p>SET 1/2" x 24" IRON PIPE
WITH CAP LS 6953</p> <p>FOUND MONUMENT AS NOTED.</p> <p>DENOTES SAN JOAQUIN COUNTY RECORDS</p> <p>DENOTES RECORD OF SURVEY, BOOK-PAGE, S.J.C.R.</p> <p>MEASURED DISTANCE. ALL DISTANCES ARE MEASURED
UNLESS NOTED OTHERWISE.</p> |
|--|--|