

CORNER RECORD

City of MANTECA

Document Number CR 11-207

County of SAN JOAQUIN, California

Brief Legal Description APPARENT CENTERLINE AT THE INTERSECTION OF UNION ROAD AT YOSEMITE AVENUE.

T.1S.,R7E.
31 32
6 5
T.2S.,R7E.

CORNER TYPE

Government Corner ☐ Control ☐
Meander ☐ Property ☐
Rancho ☐ Other ☒

Date of Survey SEPTEMBER 20 2011

COORDINATES (Optional)

N _____
E _____
Zone _____ NAD27 ☐ NAD83 ☐
NAD83 Epoch _____
Elev. _____
Vert. Datum: NVGD29 ☐ NVGD88 ☐
Meas. Units: Metric ☐ Imperial ☐

Corner— Left as found ☐ Found and tagged ☐ Established ☒ Reestablished ☐ Rebuilt ☐

Identification and type of corner found: Evidence used to identify or procedure used to establish or reestablish the corner:
P-K NAIL AND BRASS TAG AT THE APPARENT CENTERLINE INTERSECTION OF UNION ROAD AT YOSEMITE AVENUE
WAS NOT FOUND. REESTABLISHED USING THE MEASURED DISTANCE ALONG UNION ROAD FROM THE NORTHWEST
CORNER OF SECTION 5, T.2S., R.7E., M.D.B.M. ON LINE WITH THE FOUND 3/4" REBAR IN MONUMENT WELL AT
THE INTERSECTION OF SOUTH UNION ROAD AT PARKVIEW STREET (FAIRVIEW DRIVE PER 12-PM-1) AS SHOWN IN
BOOK 12 OF PARCEL MAPS AT PAGE 1, SAN JOAQUIN COUNTY RECORDS.

A description of the physical condition of the monument as found and as set or reset: _____
SET 3/4" x 30" IRON PIPE WITH PLASTIC PLUG STAMPED L.S. 6953 IN MONUMENT WELL AS SHOWN
ON PAGE 2.

SURVEYOR'S STATEMENT

This Corner Record was prepared by me or under my direction in conformance with

the Land Surveyors' Act on DECEMBER 4, 2011,

Signed [Signature] P.L.S. Number 6953



COUNTY SURVEYOR'S STATEMENT

This Corner Record was received DECEMBER 6, 2011 and examined

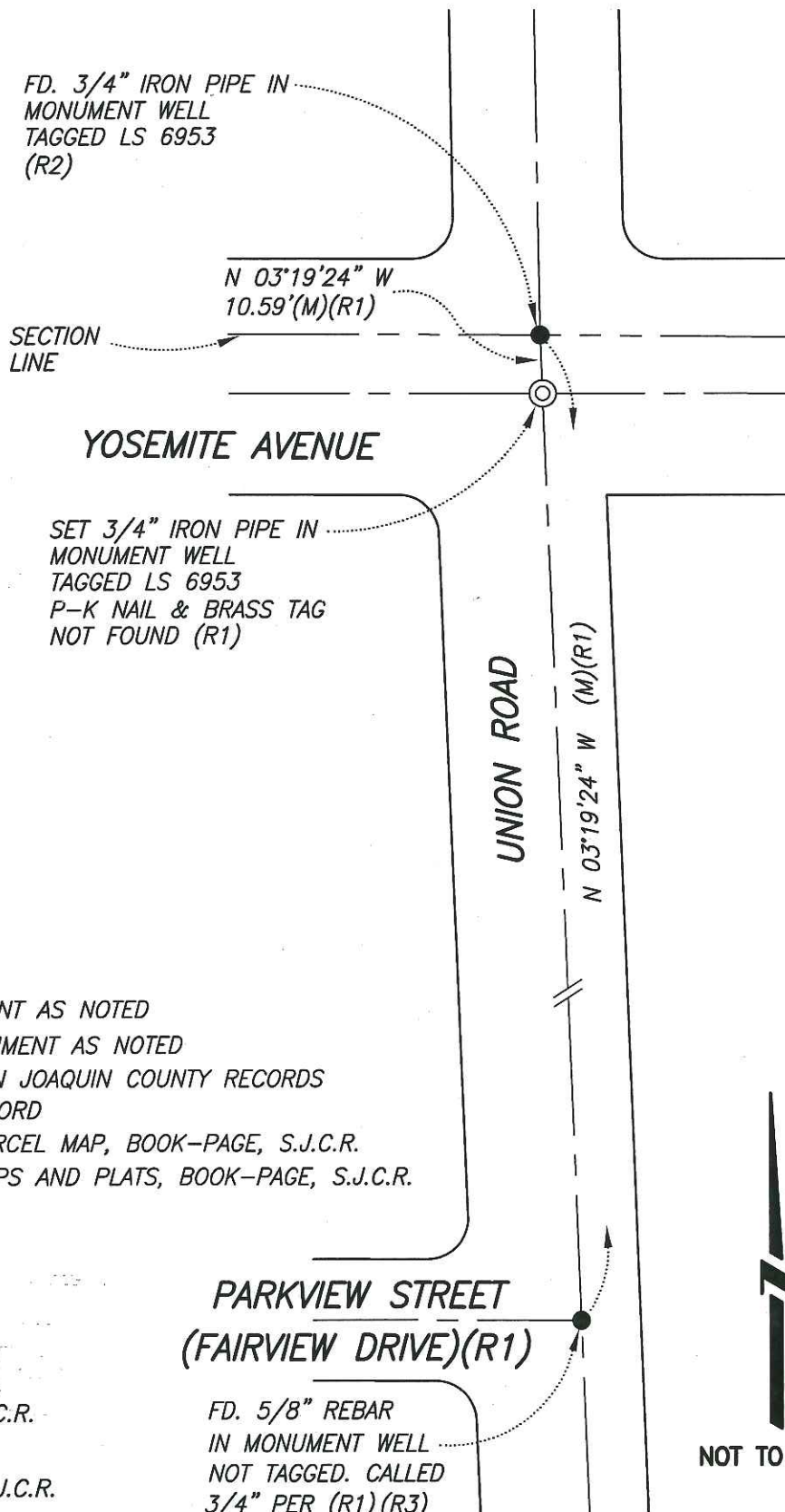
and filed DECEMBER 13, 2011

Signed Thomas M. Gau P.L.S. or R.C.E. No: 26994

Title COUNTY SURVEYOR

County Surveyor's Comment _____





LEGEND:

- ⊙ SET MONUMENT AS NOTED
- FOUND MONUMENT AS NOTED
- S.J.C.R. DENOTES SAN JOAQUIN COUNTY RECORDS
- C.R. CORNER RECORD
- P.M. DENOTES PARCEL MAP, BOOK-PAGE, S.J.C.R.
- M.P. DENOTES MAPS AND PLATS, BOOK-PAGE, S.J.C.R.

REFERENCES:

- (R1) PM. 12-1, S.J.C.R.
- (R2) C.R. -11-142
- (R3) M.P. 22-52, S.J.C.R.

FD. 5/8" REBAR
IN MONUMENT WELL
NOT TAGGED. CALLED
3/4" PER (R1)(R3)

