

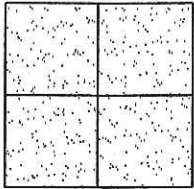
# CORNER RECORD

Document Number CR 11-204  
County of San Joaquin, California

City of \_\_\_\_\_

Brief Legal Description ACAMPO ROAD 2017' +/- EAST OF DES MOINES ROAD

(WITHIN SECTION 24 AND 25, TOWNSHIP 4 NORTH, RANGE 6 EAST, MOUNT DIABLO BASE & MERIDIAN)



## CORNER TYPE

Government Corner ☐ Control ☐  
Meander ☐ Property ☒  
Rancho ☐ Other ☐

Date of Survey November 10, 2010

## COORDINATES (Optional)

N. \_\_\_\_\_  
E. \_\_\_\_\_  
Zone \_\_\_\_\_ NAD27 ☐ NAD83 ☐  
NAD83 Epoch \_\_\_\_\_  
Elev. \_\_\_\_\_  
Vert. Datum: NGVD29 ☐ NAVD88 ☐  
Meas. Units: Metric ☐ Imperial ☒

Corner - Left as found ☒ Found and tagged ☐ Established ☐ Reestablished ☐ Rebuilt ☐

Identification and type of corner found: Evidence used to identify or procedure used to establish or reestablish the corner:  
SEE SKETCH ON BACKSIDE.

A description of the physical condition of the monument as found and as set or reset: \_\_\_\_\_  
SEE SKETCH ON BACKSIDE.

## SURVEYOR'S STATEMENT

This Corner Record was prepared by me or under my direction in conformance with  
the Land Surveyors' Act on November 28, 2011.

Signed James E. Hart P.L.S. Number 8657

## COUNTY SURVEYOR'S STATEMENT

This Corner Record was received NOVEMBER 28, 2011 and examined  
and filed DECEMBER 12, 2011.

Signed Thomas M. Gau R.C.E. No. 26994

Title County Surveyor

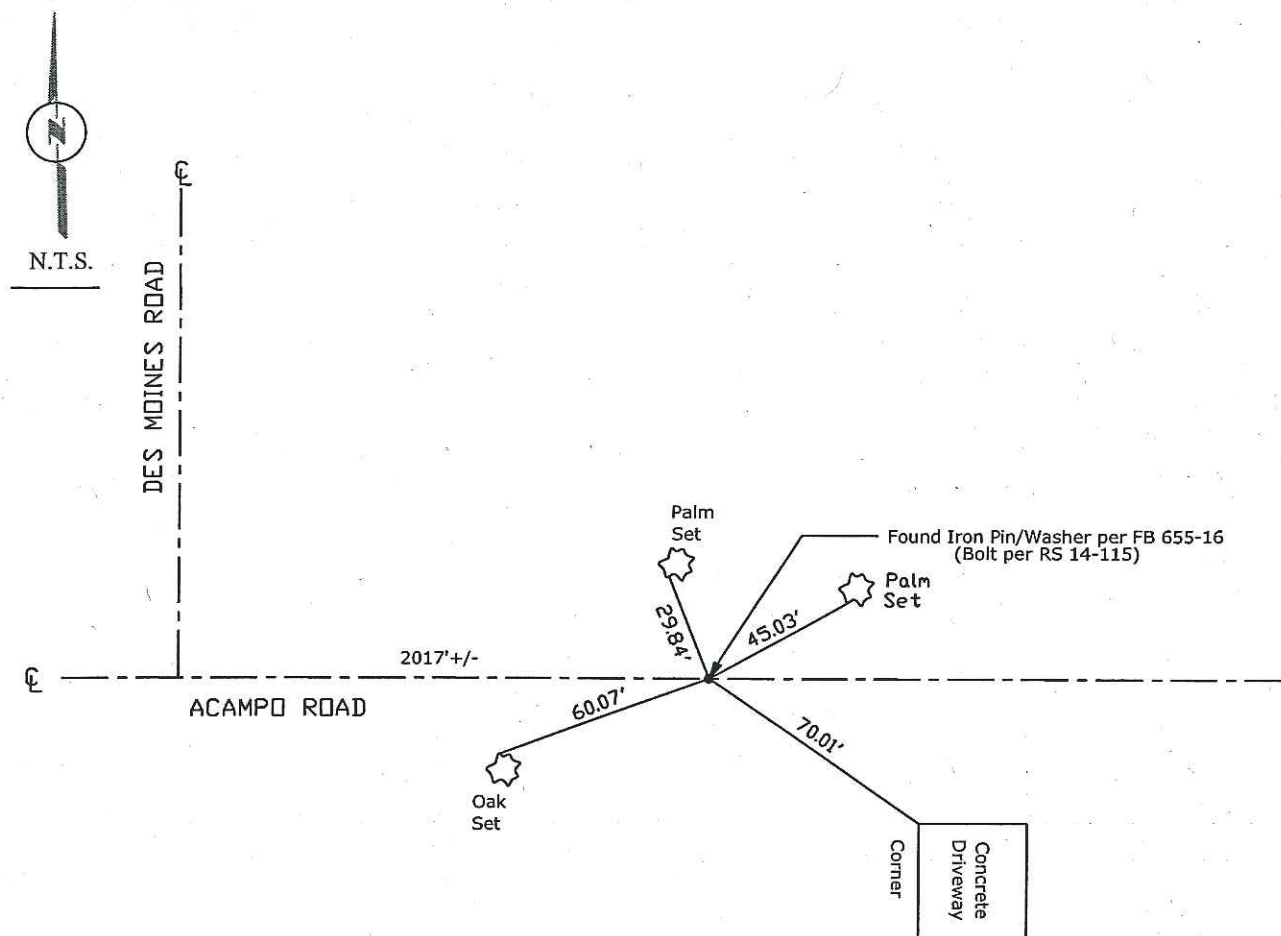
County Surveyor's Comment \_\_\_\_\_

THIS CORNER RECORD IS NOT IN COMPLIANCE WITH BOARD RULE 464(c)

REGARDING SUBMITTAL WITHIN 90 DAYS OF SURVEY.

(D.D. Sheet No. 12 )  
(Job No. 220011)





Note: Found Monuments are not tagged unless otherwise noted.

"No Attempt Was Made to Verify the Monument(s)"

Set=Conc. Nail with Brass Washer Stamped

"S.J. Co.", unless otherwise noted

Fd.=Found Conc. Nail with Brass Washer Stamped

"S.J. Co.", unless otherwise noted

FP=Fence Post

JP=Joint Pole

LP=Light Pole

PP=Power Pole

GP=Guy Pole

SP=Service Pole

TP=Telephone Pole

S.F.N.=Searched Found Nothing

N.T.S.=Not To Scale

M&P=Maps & Plats

PM=Parcel Map

RS=Record of Survey

FB=Field Book