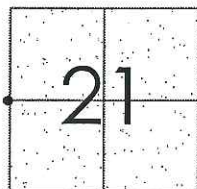


CORNER RECORD

Document Number CR 11-184
County of San Joaquin, California

City of _____
Brief Legal Description ESCALON-BELLOTA ROAD AT MARIPOSA ROAD



TIS R9E

CORNER TYPE

Government Corner ☒ Control ☐
Meander ☐ Property ☐
Rancho ☐ Other ☒

Date of Survey November 17, 2011

COORDINATES (Optional)

N. _____
E. _____
Zone _____ NAD27 ☐ NAD83 ☐
NAD83 Epoch _____
Elev. _____
Vert. Datum: NGVD29 ☐ NAVD88 ☐
Meas. Units: Metric ☐ Imperial ☒

Corner - Left as found ☐ Found and tagged ☐ Established ☐ Reestablished ☒ Rebuilt ☐

Identification and type of corner found: Evidence used to identify or procedure used to establish or reestablish the corner:
SEE SKETCH ON BACKSIDE.

A description of the physical condition of the monument as found and as set or reset:
SEE SKETCH ON BACKSIDE.

SURVEYOR'S STATEMENT

This Corner Record was prepared by me or under my direction in conformance with
the Land Surveyors' Act on November 18, 2011.

Signed James E. Hart P.L.S. Number 8657

COUNTY SURVEYOR'S STATEMENT

This Corner Record was received NOVEMBER 18, 2011 and examined
and filed DECEMBER 6, 2011.

Signed Thomas M. Gau R.C.E. No. 26994

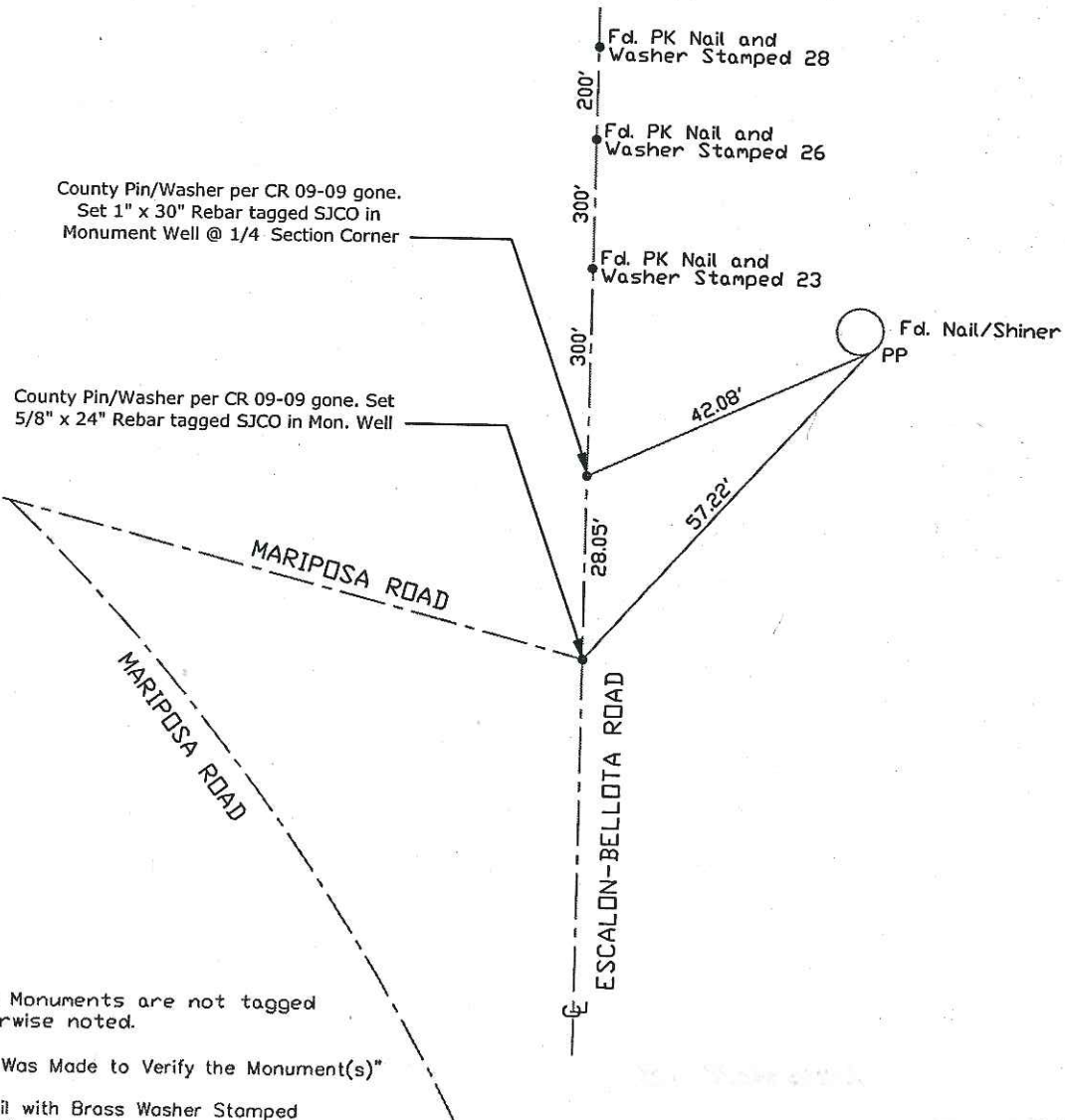
Title County Surveyor

County Surveyor's Comment _____





N.T.S.



Set=Conc. Nail with Brass Washer Stamped
"S.J. Co.", unless otherwise noted
Fd.=Found Conc. Nail with Brass Washer Stamped
"S.J. Co.", unless otherwise noted
CR=Corner Record
FP=Fence Post
JP=Joint Pole
LP=Light Pole
PP=Power Pole
GP=Guy Pole
SP=Service Pole
TP=Telephone Pole
S.F.N.=Searched Found Nothing
N.T.S.=Not To Scale
M&P=Maps & Plots
PM=Parcel Map
RS=Record of Survey
FB=Field Book