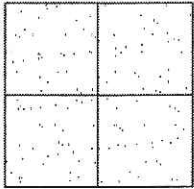


# CORNER RECORD

Document Number CR-11-180  
County of San Joaquin, California

City of \_\_\_\_\_

Brief Legal Description ALPINE AVENUE @ WENDELL AVENUE  
(WITHIN SECTION 6, TOWNSHIP 1 NORTH, RANGE 6 EAST, MOUNT DIABLO BASE & MERIDIAN)



## CORNER TYPE

Government Corner ☐ Control ☐  
Meander ☐ Property ☐  
Rancho ☐ Other ☒

Date of Survey September 30, 2011

## COORDINATES (Optional)

N. \_\_\_\_\_  
E. \_\_\_\_\_  
Zone \_\_\_\_\_ NAD27 ☐ NAD83 ☐  
NAD83 Epoch \_\_\_\_\_  
Elev. \_\_\_\_\_  
Vert. Datum: NGVD29 ☐ NAVD88 ☐  
Meas. Units: Metric ☐ Imperial ☒

Corner - Left as found ☐ Found and tagged ☐ Established ☐ Reestablished ☒ Rebuilt ☐

Identification and type of corner found: Evidence used to identify or procedure used to establish or reestablish the corner:  
SEE SKETCH ON BACKSIDE.

A description of the physical condition of the monument as found and as set or reset:  
SEE SKETCH ON BACKSIDE.

## SURVEYOR'S STATEMENT

This Corner Record was prepared by me or under my direction in conformance with  
the Land Surveyors' Act on October 11, 2011.

Signed James E. Hart P.L.S. Number 8657

## COUNTY SURVEYOR'S STATEMENT

This Corner Record was received OCTOBER 11, 2011 and examined  
and filed NOVEMBER 28, 2011.

Signed Thomas M. Gau R.C.E. No. 26994

Title County Surveyor

County Surveyor's Comment \_\_\_\_\_

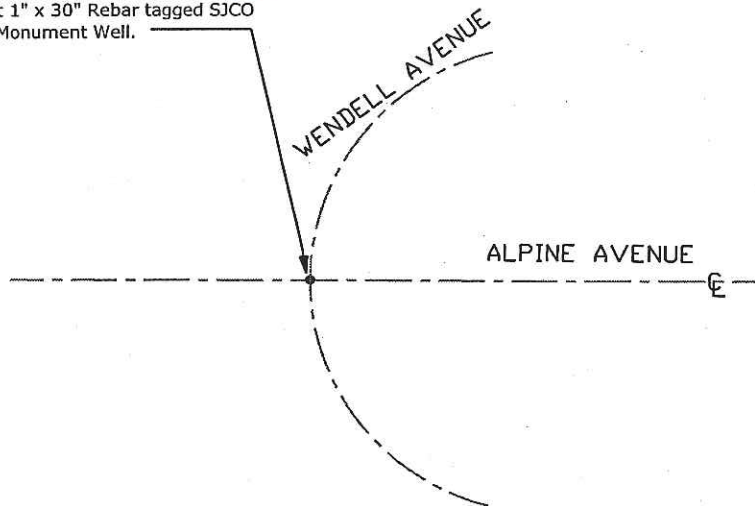
(D.D. Sheet No. 30A)  
(Job No. 220781)





N.T.S.

Fd. 2' Spreaders per CR 11-179.  
Set 1" x 30" Rebar tagged SJCO  
in Monument Well.



Note: Found Monuments are not tagged  
unless otherwise noted.

"No Attempt Was Made to Verify the Monument(s)"

Set=Conc. Nail with Brass Washer Stamped

"S.J. Co.", unless otherwise noted

Fd.=Found Conc. Nail with Brass Washer Stamped

"S.J. Co.", unless otherwise noted

CR=Corner Record

FP=Fence Post

JP=Joint Pole

LP=Light Pole

PP=Power Pole

GP=Guy Pole

SP=Service Pole

TP=Telephone Pole

S.F.N.=Searched Found Nothing

N.T.S.=Not To Scale

M&P=Maps & Plats

PM=Parcel Map

RS=Record of Survey

FB=Field Book