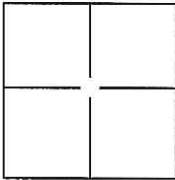


CORNER RECORD

Document Number CR 11-176City of STOCKTONCounty of SAN JOAQUIN, CaliforniaBrief Legal Description VINTAGE CIRCLE, HERITAGE PLACE AND LEGACY COURT, M.&P. 33-16,
SEC. 30, T.2N., R.6E., M.D.B.&M.**CORNER TYPE**

Government Corner	<input type="checkbox"/>	Control	<input type="checkbox"/>
Meander	<input type="checkbox"/>	Property	<input type="checkbox"/>
Rancho	<input type="checkbox"/>	Other	<input checked="" type="checkbox"/>

Date of Survey JUNE 7, 2011**COORDINATES(Optional)**

N. _____
E. _____
Zone _____ NAD27 ☐ NAD83 ☐
NAD83 Epoch _____
Elev. _____
Vert. Datum: NGVD29 ☐ NADV88 ☐
Meas. Units: Metric ☐ Imperial ☐

Corner - Left as found ☒ Found and tagged ☐ Established ☐ Reestablished ☐ Rebuilt ☐

Identification and type of corner found: Evidence used to identify or procedure used to establish or reestablish the corner:
SEE PLAT ON BACK

A description of the physical condition of the monument as found and as set or reset: _____
FOUND MONUMENT WELL WITH 2' STRADS, NO MONUMENT IN WELL AND CHISELED CROSS
ON LOT LINE PROJECTION PER M.&P. 33-16.

SURVEYOR'S STATEMENT

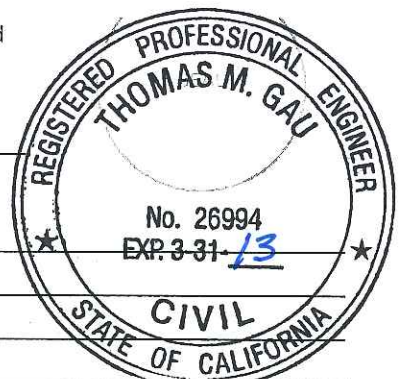
This Corner Record was prepared by me or under my direction in conformance with
the Land Surveyor's Act on SEPTEMBER 14, 2011.

Signed William M. Koch P.L.S. or R.C.E. No.: 8092**COUNTY SURVEYOR'S STATEMENT**

This Corner Record was received SEPTEMBER 23, 2011 and examined
and filed OCTOBER 20, 2011.

Signed Thomas M. Gau P.L.S. or R.C.E. No.: 26994Title COUNTY SURVEYOR

County Surveyor's Comment _____



D.D. SHEET 29C

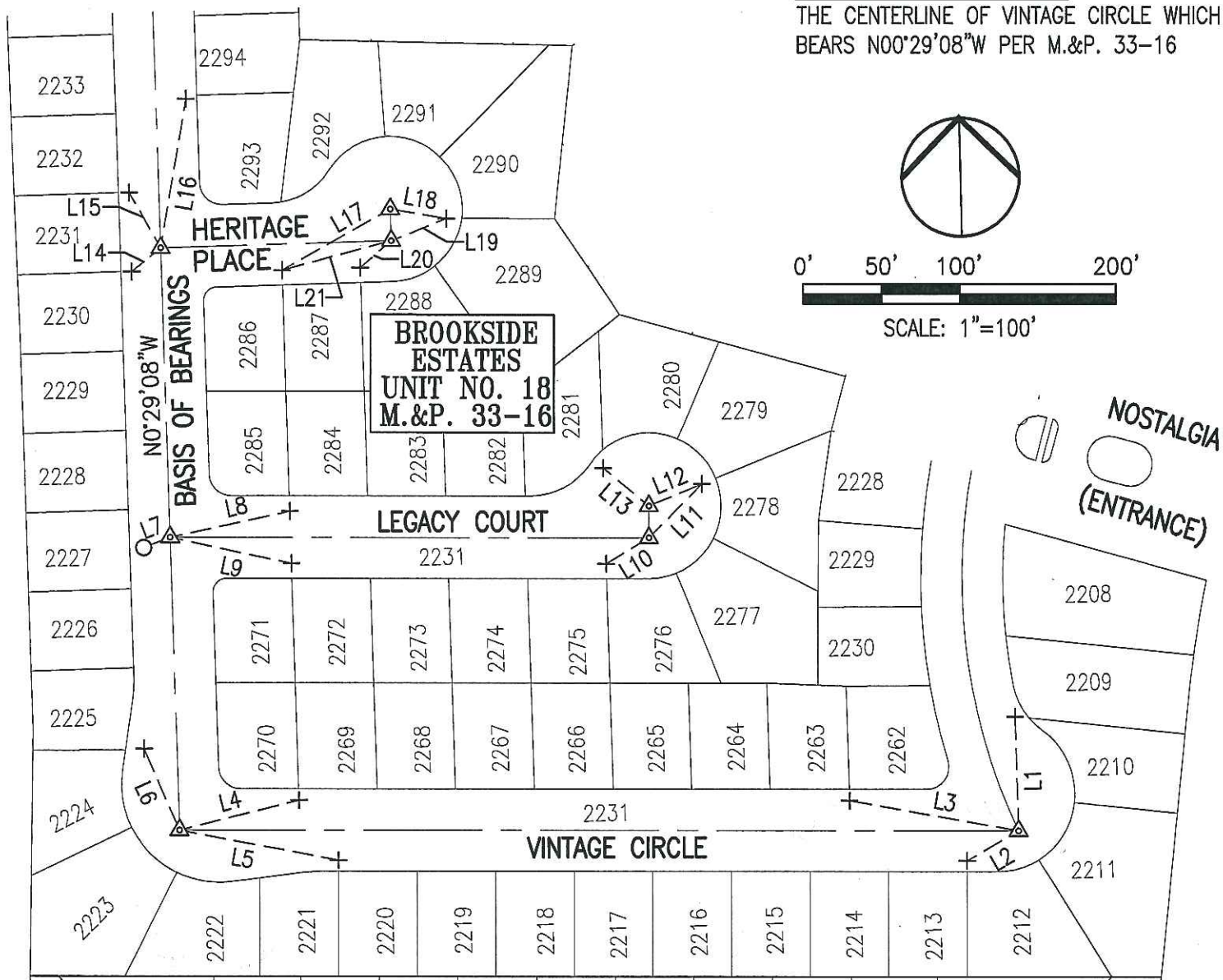
LEGEND:

- M.&P. BOOK OF MAPS AND PLATS, VOLUME-PAGE
 + FOUND CHISELED CROSS PER M.&P. 33-16
 △ FOUND MONUMENT WELL W/2' STRADS, NO MONUMENT IN MONUMENT WELL
 ○ SET PK NAIL W/TAG STAMPED "PLS 8092"

SEE CERTIFICATE OF CORRECTION FILED AS
 I.N. 98117471 FOR ROAD NAME CHANGES
 AND CHISELED CROSS LOCATIONS

BASIS OF BEARINGS:

THE CENTERLINE OF VINTAGE CIRCLE WHICH
 BEARS N00°29'08"W PER M.&P. 33-16



LINE #	DIRECTION	LENGTH
L1	S0°20'09"E	71.59'
L2	S61°12'01"W	37.90'
L3	S78°41'14"E	109.43'
L4	S77°08'47"W	77.82'
L5	S78°00'19"E	102.38'
L6	N22°18'21"W	55.81'
L7	N70°06'32"E	18.03'

LINE #	DIRECTION	LENGTH
L8	N78°59'45"E	77.40'
L9	N76°32'22"W	78.30'
L10	N60°20'41"E	32.12'
L11	N46°14'52"E	47.81'
L12	N69°01'37"E	36.50'
L13	S49°29'13"E	37.89'
L14	N52°19'33"E	23.87'

LINE #	DIRECTION	LENGTH
L15	N28°34'40"W	40.34'
L16	S10°58'09"W	95.71'
L17	S62°03'00"W	79.17'
L18	S79°22'42"E	36.55'
L19	S69°37'20"W	38.14'
L20	N50°20'02"E	26.09'
L21	S76°17'59"W	72.16'