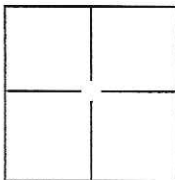


CORNER RECORD

Document Number

CR 11-175City of STOCKTONCounty of SAN JOAQUIN, CaliforniaBrief Legal Description VINTAGE CIRCLE, ANTIQUE PLACE & HEIRLOOM COURT, M.&P. 33-16,
SEC. 30, T.2N., R.6E., M.D.B.&M.**CORNER TYPE**

Government Corner	<input type="checkbox"/>	Control	<input type="checkbox"/>
Meander	<input type="checkbox"/>	Property	<input type="checkbox"/>
Rancho	<input type="checkbox"/>	Other	<input checked="" type="checkbox"/>

Date of Survey JUNE 7, 2011**COORDINATES(Optional)**

N. _____
E. _____
Zone _____ NAD27 ☐ NAD83 ☐
NAD83 Epoch _____
Elev. _____
Vert. Datum: NGVD29 ☐ NADV88 ☐
Meas. Units: Metric ☐ Imperial ☐

Corner - Left as found ☒ Found and tagged ☐ Established ☐ Reestablished ☐ Rebuilt ☐

Identification and type of corner found: Evidence used to identify or procedure used to establish or reestablish the corner:
SEE PLAT ON BACK

A description of the physical condition of the monument as found and as set or reset: _____
FOUND MONUMENT WELL WITH 2' STRADS, NO MONUMENT IN WELL AND CHISELED CROSS
ON LOT LINE PROJECTION PER M.&P. 33-16.

SURVEYOR'S STATEMENT

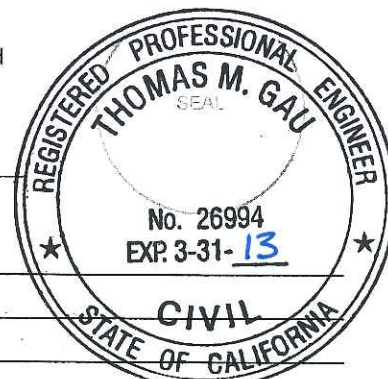
This Corner Record was prepared by me or under my direction in conformance with
the Land Surveyor's Act on SEPTEMBER 14, 2011.

Signed [Signature] P.L.S. or R.C.E. No.: 8092**COUNTY SURVEYOR'S STATEMENT**

This Corner Record was received SEPTEMBER 23, 2011 and examined
and filed OCTOBER 20, 2011.

Signed Thomas M. Gau P.L.S. or R.C.E. No.: 26994Title COUNTY SURVEYOR

County Surveyor's Comment _____

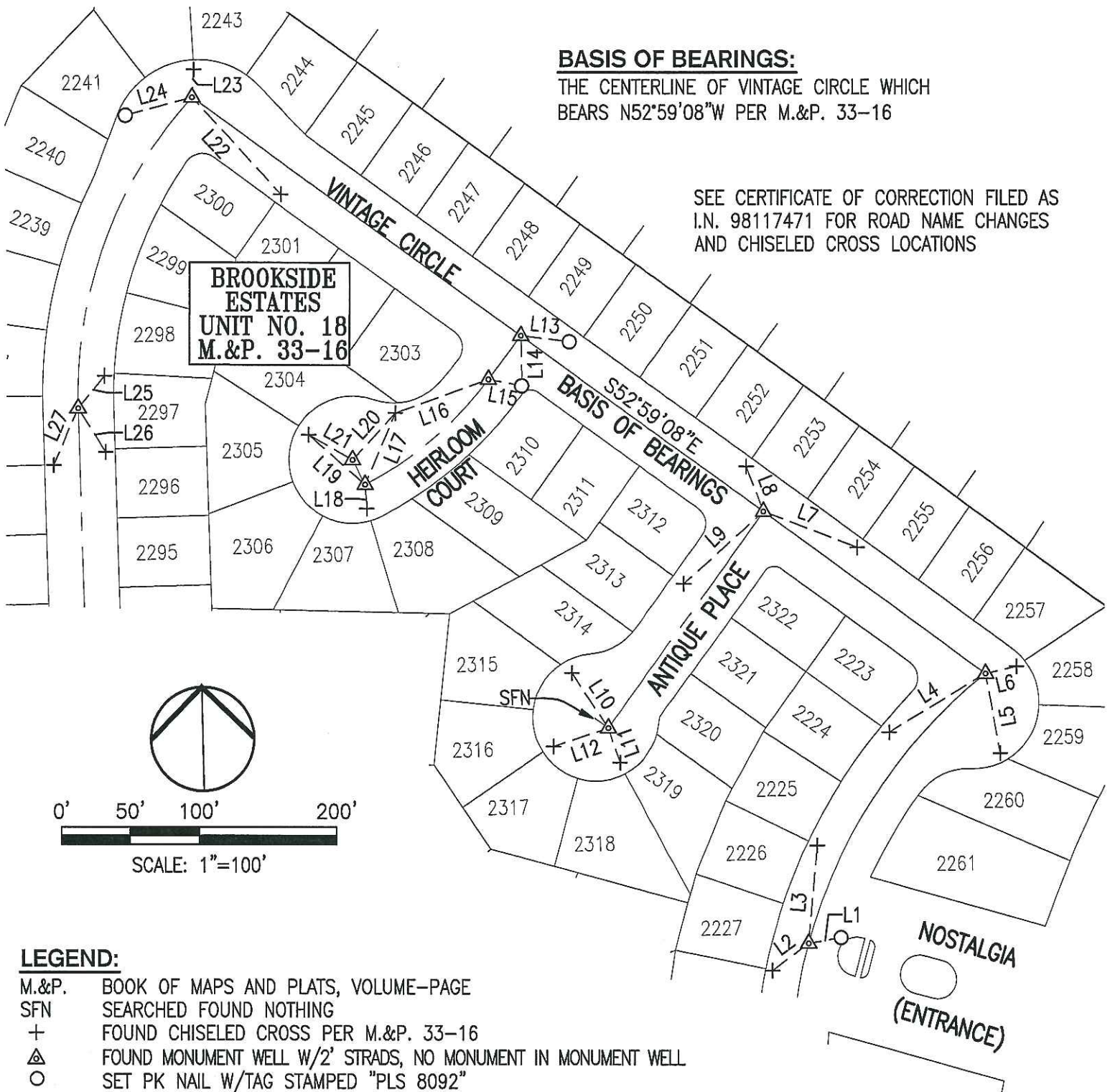


D.D. SHEET 29C

BASIS OF BEARINGS:

THE CENTERLINE OF VINTAGE CIRCLE WHICH
BEARS N52°59'08"W PER M.&P. 33-16

SEE CERTIFICATE OF CORRECTION FILED AS
I.N. 98117471 FOR ROAD NAME CHANGES
AND CHISELED CROSS LOCATIONS

**LEGEND:**

M.&P. BOOK OF MAPS AND PLATS, VOLUME--PAGE
SFN SEARCHED FOUND NOTHING
+ FOUND CHISELED CROSS PER M.&P. 33-16
△ FOUND MONUMENT WELL W/2' STRADS, NO MONUMENT IN MONUMENT WELL
○ SET PK NAIL W/TAG STAMPED "PLS 8092"

LINE TABLE			LINE TABLE			LINE TABLE			LINE TABLE		
LINE #	DIRECTION	LENGTH	LINE #	DIRECTION	LENGTH	LINE #	DIRECTION	LENGTH	LINE #	DIRECTION	LENGTH
L1	N81°09'19"E	24.07'	L8	S20°00'06"E	34.88'	L15	S77°51'12"E	24.58'	L22	N41°33'29"W	95.56'
L2	N54°39'11"E	32.78'	L9	N49°15'33"E	77.79'	L16	N71°30'15"E	71.96'	L23	N4°41'00"E	20.27'
L3	N6°23'15"E	71.13'	L10	S32°27'45"E	47.95'	L17	N24°26'21"E	56.23'	L24	N76°07'00"E	49.73'
L4	N60°31'25"E	82.93'	L11	N17°39'39"W	26.13'	L18	N2°42'17"W	17.30'	L25	S40°30'15"W	30.30'
L5	S9°02'57"E	58.42'	L12	S73°05'06"W	42.25'	L19	S47°22'14"E	54.35'	L26	S30°59'23"E	37.42'
L6	S78°14'18"W	23.42'	L13	N81°36'06"W	35.72'	L20	S43°56'55"W	46.07'	L27	N24°40'12"E	44.77'
L7	S68°00'04"E	73.22'	L14	S0°17'25"W	36.29'	L21	N59°00'44"W	36.49'			