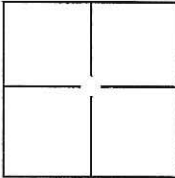
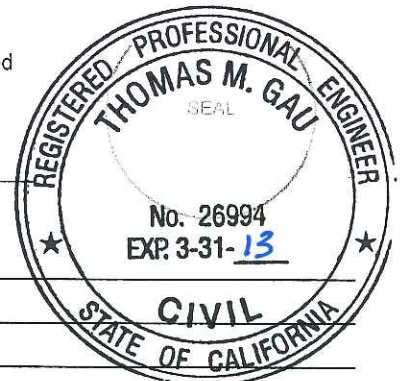


CORNER RECORD

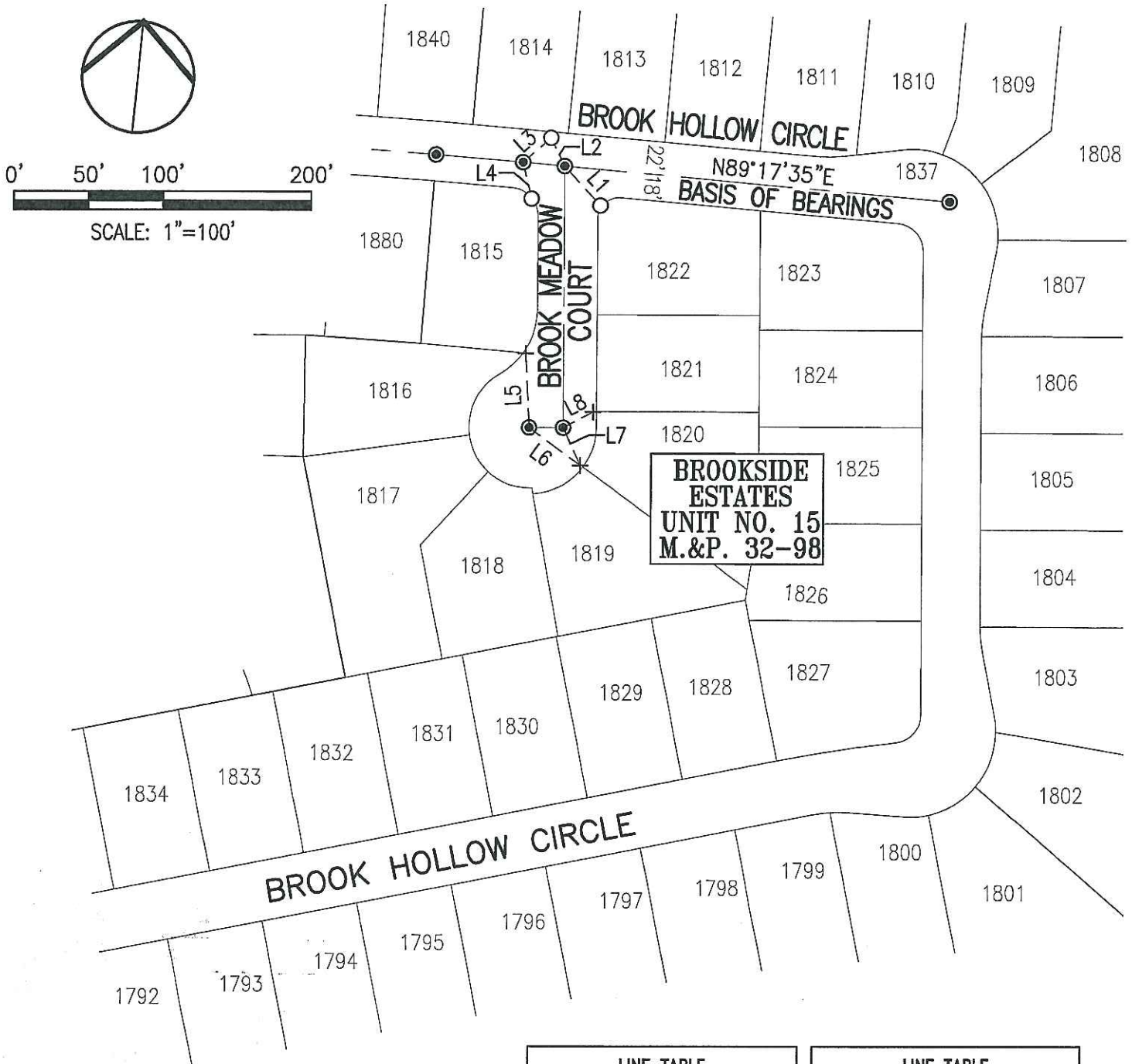
Document Number CL 11-172City of STOCKTONCounty of SAN JOAQUIN, CaliforniaBrief Legal Description BROOK HOLLOW CIRCLE AND BROOK MEADOW COURT, M.&P. 32-98,
SEC. 30, T.2N., R.6E., M.D.B.&M.**CORNER TYPE**Government Corner ☐ Control ☐
Meander ☐ Property ☐
Rancho ☐ Other ☒Date of Survey MAY 27, 2011**COORDINATES(Optional)**N. _____
E. _____
Zone _____ NAD27 ☐ NAD83 ☐
NAD83 Epoch _____
Elev. _____
Vert. Datum: NGVD29 ☐ NADV88 ☐
Meas. Units: Metric ☐ Imperial ☐**Corner -** Left as found ☒ Found and tagged ☐ Established ☐ Reestablished ☐ Rebuilt ☐Identification and type of corner found: Evidence used to identify or procedure used to establish or reestablish the corner:
SEE PLAT ON BACKA description of the physical condition of the monument as found and as set or reset: _____
FOUND 3/4" REBAR WITH CAP ATTACHED AND STAMPED "LS 4334" IN MONUMENT WELL AND
CHISELED CROSS ON LOT LINE PROJECTION PER M.&P. 32-98.**SURVEYOR'S STATEMENT**This Corner Record was prepared by me or under my direction in conformance with
the Land Surveyor's Act on SEPTEMBER 14, 2011.Signed [Signature] P.L.S. or R.C.E. No.: 8092**COUNTY SURVEYOR'S STATEMENT**This Corner Record was received SEPTEMBER 23, 2011 and examined
and filed OCTOBER 20, 2011.Signed [Signature] P.L.S. or R.C.E. No.: 26994Title COUNTY SURVEYOR

County Surveyor's Comment _____



LEGEND:

M.&P. BOOK OF MAPS AND PLATS, VOLUME--PAGE
 SFN SEARCHED, FOUND NOTHING
 + FOUND CHISELED CROSS PER M.&P. 32-98
 ● FOUND ¾" REBAR W/CAP ATTACHED AND STAMPED "LS 4334" IN MONUMENT WELL PER M.&P. 32-98
 ○ SET PK NAIL W/TAG STAMPED "PLS 8092"



LINE TABLE		
LINE #	DIRECTION	LENGTH
L1	N47°59'07"W	35.78'
L2	S31°36'10"E	21.04'
L3	S43°14'12"W	25.08'
L4	N19°11'35"W	25.23'

LINE TABLE		
LINE #	DIRECTION	LENGTH
L5	S8°33'34"E	49.84'
L6	N59°30'47"W	43.00'
L7	N30°24'08"W	27.94'
L8	S56°06'18"W	22.62'