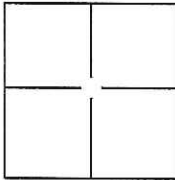


CORNER RECORD

Document Number CR 11-171City of STOCKTONCounty of SAN JOAQUIN, CaliforniaBrief Legal Description BROOK HOLLOW CIRCLE AND BROOK HOLLOW COURT, M.&P. 33-38,SEC. 30, T.2N., R.6E., M.D.B.&M.**CORNER TYPE**

Government Corner ☐ Control ☐
Meander ☐ Property ☐
Rancho ☐ Other ☒

Date of Survey MAY 27, 2011**COORDINATES(Optional)**

N. _____
E. _____
Zone _____ NAD27 ☐ NAD83 ☐
NAD83 Epoch _____
Elev. _____
Vert. Datum: NGVD29 ☐ NADV88 ☐
Meas. Units: Metric ☐ Imperial ☐

Corner - Left as found ☒ Found and tagged ☐ Established ☐ Reestablished ☐ Rebuilt ☐

Identification and type of corner found: Evidence used to identify or procedure used to establish or reestablish the corner:

SEE PLAT ON BACK

A description of the physical condition of the monument as found and as set or reset: _____

FOUND 3/4" REBAR WITH CAP ATTACHED AND STAMPED "LS 4334" IN MONUMENT WELL AND
CHISELED CROSS ON LOT LINE PROJECTION PER M.&P. 33-38.

SURVEYOR'S STATEMENT

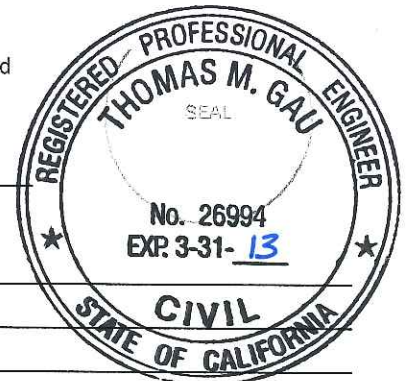
This Corner Record was prepared by me or under my direction in conformance with
the Land Surveyor's Act on SEPTEMBER 14, 2011.

Signed William M. Koch P.L.S. or R.C.E. No.: 8092**COUNTY SURVEYOR'S STATEMENT**

This Corner Record was received SEPTEMBER 23, 2011 and examined
and filed OCTOBER 20, 2011.

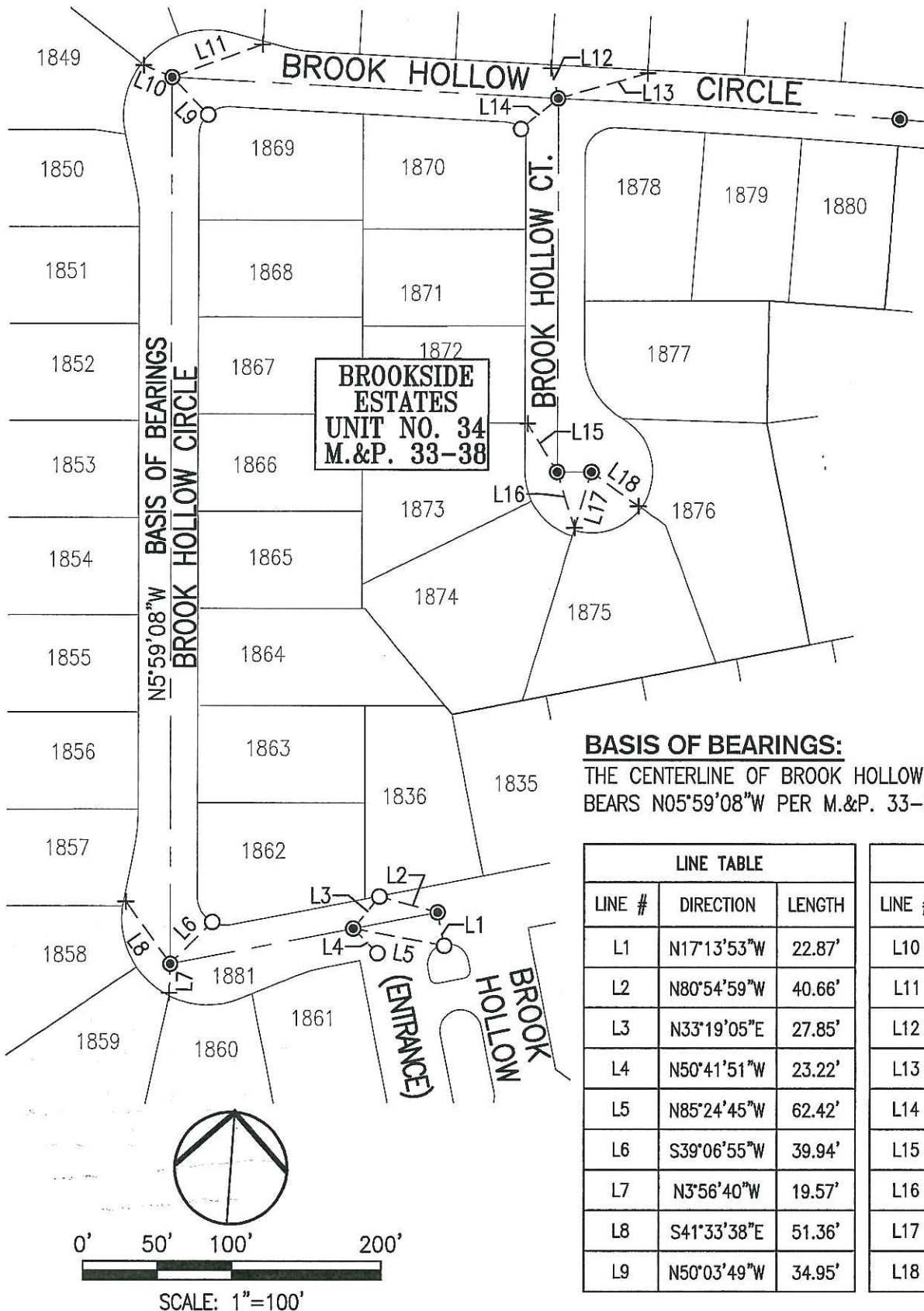
Signed Thomas M. Gau P.L.S. or R.C.E. No.: 26994Title COUNTY SURVEYOR

County Surveyor's Comment _____



LEGEND:

- M.&P. BOOK OF MAPS AND PLATS, VOLUME--PAGE
- SFN SEARCHED, FOUND NOTHING
- + FOUND CHISELED CROSS PER M.&P. 33-38
- FOUND 3/4" REBAR W/CAP ATTACHED AND STAMPED "LS 4334" IN MONUMENT WELL PER M.&P. 33-38
- △ FOUND MONUMENT WELL W/2' STRADS, NO MONUMENT IN MONUMENT WELL
- SET PK NAIL W/TAG STAMPED "PLS 8092"



BASIS OF BEARINGS:

THE CENTERLINE OF BROOK HOLLOW CIRCLE WHICH BEARS N05°59'08"W PER M.&P. 33-38

LINE TABLE		
LINE #	DIRECTION	LENGTH
L1	N17°13'53"W	22.87'
L2	N80°54'59"W	40.66'
L3	N33°19'05"E	27.85'
L4	N50°41'51"W	23.22'
L5	N85°24'45"W	62.42'
L6	S39°06'55"W	39.94'
L7	N3°56'40"W	19.57'
L8	S41°33'38"E	51.36'
L9	N50°03'49"W	34.95'

LINE TABLE		
LINE #	DIRECTION	LENGTH
L10	S73°08'56"E	20.87'
L11	S63°59'41"W	64.59'
L12	S19°32'12"E	20.94'
L13	S68°18'16"W	62.31'
L14	N44°39'22"E	32.51'
L15	S37°29'46"E	38.20'
L16	N23°25'12"W	39.07'
L17	N10°52'33"E	38.97'
L18	N60°01'50"W	39.02'