

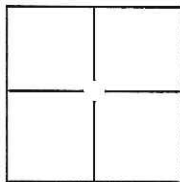
CORNER RECORD

Document Number CL 11-168

City of STOCKTON

County of SAN JOAQUIN, California

Brief Legal Description VICTROLA DRIVE, M.&P. 36-45, SEC. 31, T.2N., R.6E., M.D.B.&M.



CORNER TYPE

Government Corner ☐ Control ☐
Meander ☐ Property ☐
Rancho ☐ Other ☒

Date of Survey MAY 20, 2011

COORDINATES(Optional)

N. _____
E. _____
Zone _____ NAD27 ☐ NAD83 ☐
NAD83 Epoch _____
Elev. _____
Vert. Datum: NGVD29 ☐ NADV88 ☐
Meas. Units: Metric ☐ Imperial ☐

Corner - Left as found ☒ Found and tagged ☐ Established ☐ Reestablished ☐ Rebuilt ☐

Identification and type of corner found: Evidence used to identify or procedure used to establish or reestablish the corner:
SEE PLAT ON BACK

A description of the physical condition of the monument as found and as set or reset: FOUND 3/4" REBAR WITH CAP ATTACHED AND STAMPED "LS 7079" IN MONUMENT WELL AND CHISELED CROSS ON LOT LINE PROJECTION PER M.&P. 36-45.

SURVEYOR'S STATEMENT

This Corner Record was prepared by me or under my direction in conformance with the Land Surveyor's Act on SEPTEMBER 14, 2011.

Signed William M. Koch P.L.S. or R.C.E. No.: 8092



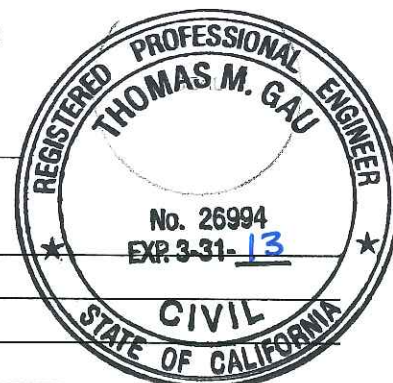
COUNTY SURVEYOR'S STATEMENT

This Corner Record was received SEPTEMBER 23, 2011 and examined and filed OCTOBER 20, 2011.

Signed Thomas M. Gau P.L.S. or R.C.E. No.: 26994

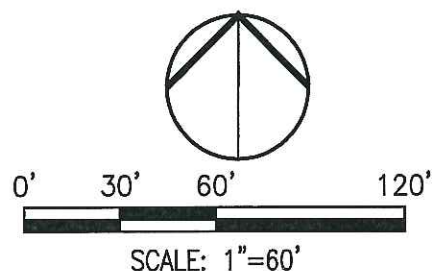
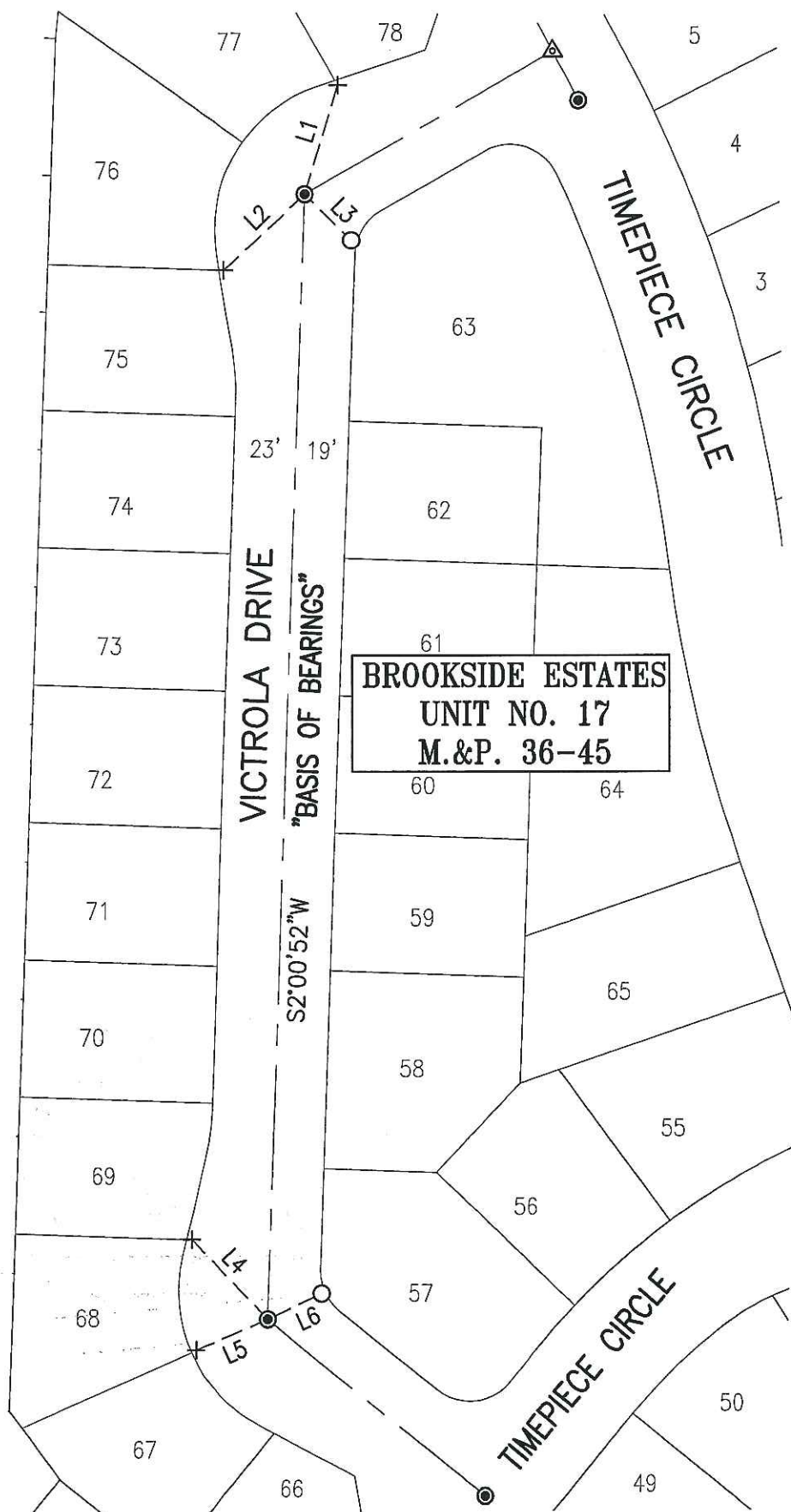
Title COUNTY SURVEYOR

County Surveyor's Comment _____



LEGEND:

- M.&P. BOOK OF MAPS AND PLATS, VOLUME-PAGE
 + FOUND CHISELED CROSS PER M.&P. 36-45
 ● FOUND 3/4" REBAR W/CAP ATTACHED AND STAMPED "LS 7079" IN MONUMENT WELL PER M.&P. 36-45
 ▲ FOUND MONUMENT WELL W/2' STRADS, NO MONUMENT IN MONUMENT WELL
 ○ SET PK NAIL W/TAG STAMPED "PLS 8092"



MONUMENT TIES:

LINE TABLE		
LINE #	DIRECTION	LENGTH
L1	N17°01'06"E	41.62'
L2	S47°11'29"W	40.74'
L3	S45°08'11"E	23.90'
L4	N43°47'50"W	40.16'
L5	S66°47'43"W	28.48'
L6	N65°08'01"E	22.12'

BASIS OF BEARINGS:

THE CENTERLINE OF VICTROLA DRIVE WHICH BEARS S02°00'52"W PER M.&P. 36-45