

# CORNER RECORD

Document Number CR 11-155

City of RIPON County of SAN JOAQUIN, California

Brief Legal Description APPARENT LOCATION FOR THE SW CORNER OF THE NW 1/4 OF THE SE 1/4 OF SECTION 34, T.2S., R.7E., M.D.B.&M.

NW 1/4	NE 1/4
SW 1/4	SE 1/4

Government Corner ☐ Control ☐  
 Meander ☐ Property ☐  
 Rancho ☐ Other ☒  
 Date of Survey 07-18-2011

## COORDINATES (Optional)

N. \_\_\_\_\_  
 E. \_\_\_\_\_  
 Zone \_\_\_\_\_ NAD27 ☐ NAD83 ☐  
 NAD83 Epoch \_\_\_\_\_  
 Elev. \_\_\_\_\_  
 Vert. Datum: NGVD29 ☐ NAVD88 ☐  
 Meas. Units: Metric ☐ Imperial ☐

SEC.34 T2S, R7E

Corner — Left as found ☒ Found and tagged ☐ Established ☐ Reestablished ☐ Rebuilt ☐

Identification and type of corner found: Evidence used to identify or procedure used to establish or reestablished the corner:  
FOUND 3/4" REBAR NO TAG APPROXIMATELY 2644'± WEST OF THE CENTERLINE OF AUSTIN ROAD  
AT THE APPARENT SW CORNER OF THE NW 1/4 OF THE SE 1/4 OF SECTION 34 T.2S., R.7E., M.D.B.&M.  
FOUND MONUMENT AS SHOWN ON RECORD OF SURVEY FILED IN BOOK 26 OF SURVEYS AT PAGE 16,  
SAN JOAQUIN COUNTY RECORDS.

A description of the physical condition of the monument as found and as set or reset: \_\_\_\_\_  
MONUMENT IS IN AREA OF RECONSTRUCTION, SET TIES AS SHOWN ON PAGE 2.

This Corner Record was prepared by me or under my direction in conformance with the Land Surveyors' Act on AUGUST 3, 2011.

Signed [Signature] L.S. 6953



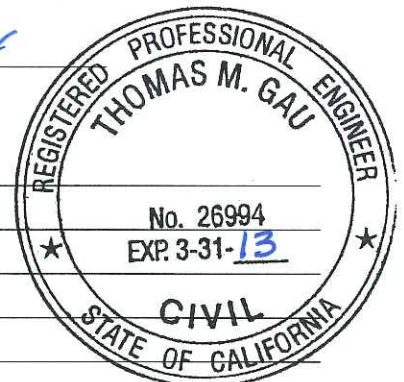
## COUNTY SURVEYOR'S STATEMENT

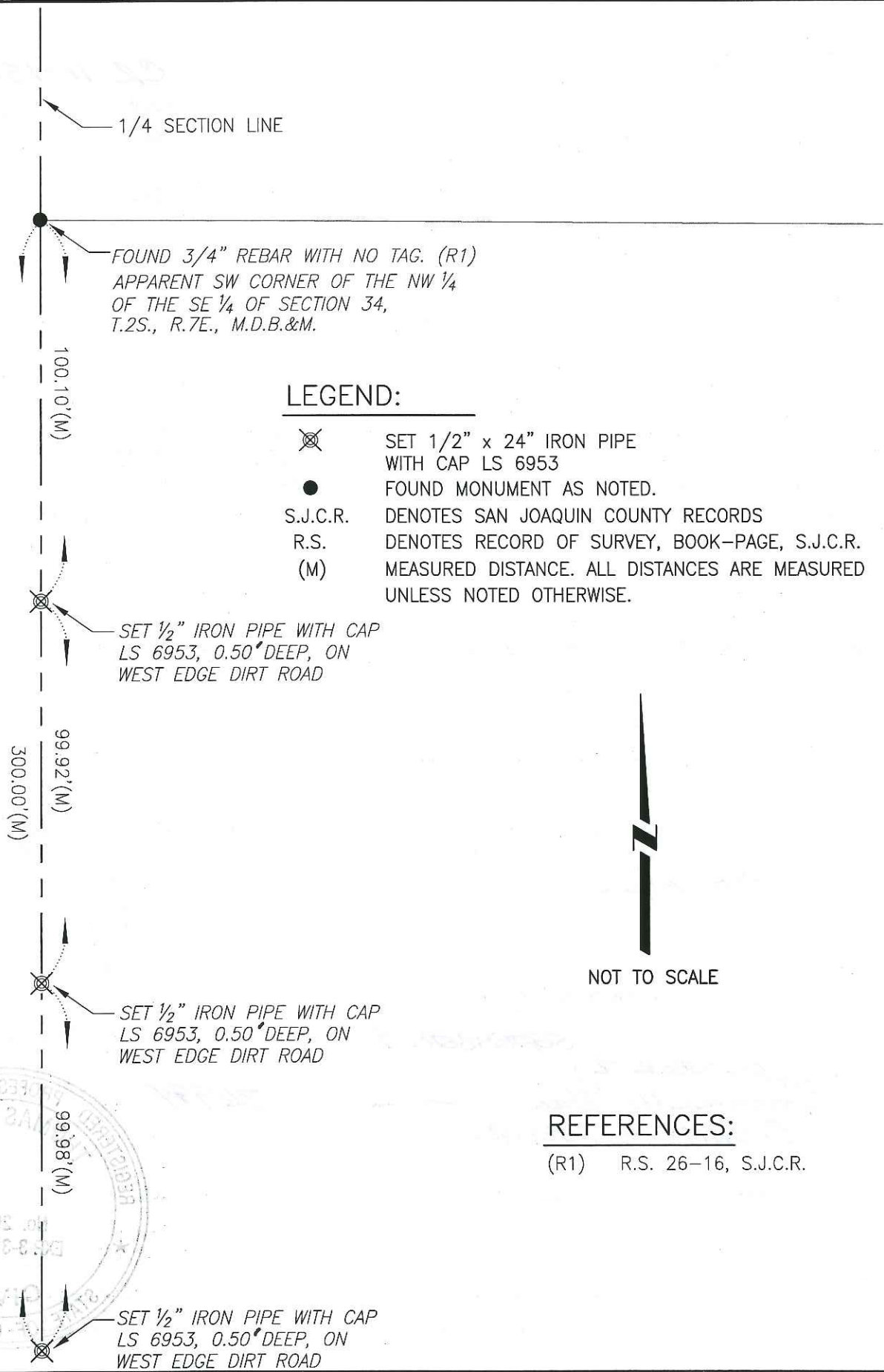
This Corner Record was received SEPTEMBER 9, 2011 and examined and filed OCTOBER 20, 2011.

Signed Thomas M. Gau P.E.S. or R.C.E. No. 26994

Title COUNTY SURVEYOR

County Surveyors Comment \_\_\_\_\_





### LEGEND:

- ⊗ SET 1/2" x 24" IRON PIPE WITH CAP LS 6953
- FOUND MONUMENT AS NOTED.
- S.J.C.R. DENOTES SAN JOAQUIN COUNTY RECORDS
- R.S. DENOTES RECORD OF SURVEY, BOOK-PAGE, S.J.C.R.
- (M) MEASURED DISTANCE. ALL DISTANCES ARE MEASURED UNLESS NOTED OTHERWISE.



NOT TO SCALE

### REFERENCES:

(R1) R.S. 26-16, S.J.C.R.

