

CORNER RECORD

Document Number

CR 11-154

City of RIPON

County of SAN JOAQUIN, California

Brief Legal Description PROPERTY CORNER APPROXIMATELY 1078'± WEST OF CURTIS ROAD AND 916'± SOUTH OF HUTCHINS ROAD IN THE NW QUARTER OF SECTION 35, T.2S., R.7E., M.D.B.&M.

NW 1/4	NE 1/4
SW 1/4	SE 1/4

Government Corner ☐ Control ☐
 Meander ☐ Property ☒
 Rancho ☐ Other ☐
 Date of Survey 07-18-2011

COORDINATES (Optional)

N. _____
 E. _____
 Zone _____ NAD27 ☐ NAD83 ☐
 NAD83 Epoch _____
 Elev. _____
 Vert. Datum: NGVD29 ☐ NAVD88 ☐
 Meas. Units: Metric ☐ Imperial ☐

SEC.35 T2S, R7E

Corner — Left as found ☒ Found and tagged ☐ Established ☐ Reestablished ☐ Rebuilt ☐

Identification and type of corner found: Evidence used to identify or procedure used to establish or reestablished the corner:
FOUND 3/4" REBAR NOT TAGGED, APPROXIMATELY 1078'± WEST OF THE CENTERLINE OF CURTIS ROAD AND 916'± SOUTH OF THE CENTERLINE OF HUTCHINS ROAD IN THE NW QUARTER OF SECTION 35, T.2S., R.7E., M.D.B.&M. FOUND MONUMENT AS SHOWN ON PARCEL MAP FILED IN BOOK 9 OF PARCEL MAPS AT PAGE 234, SAN JOAQUIN COUNTY RECORDS.

A description of the physical condition of the monument as found and as set or reset: _____
MONUMENT IS IN AREA OF RECONSTRUCTION, SET TIES AS SHOWN ON PAGE 2.

This Corner Record was prepared by me or under my direction in conformance with the Land Surveyors' Act on AUGUST 3, 2011.

Signed [Signature] L.S. 6953



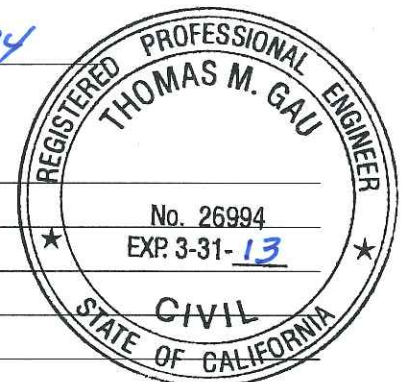
COUNTY SURVEYOR'S STATEMENT

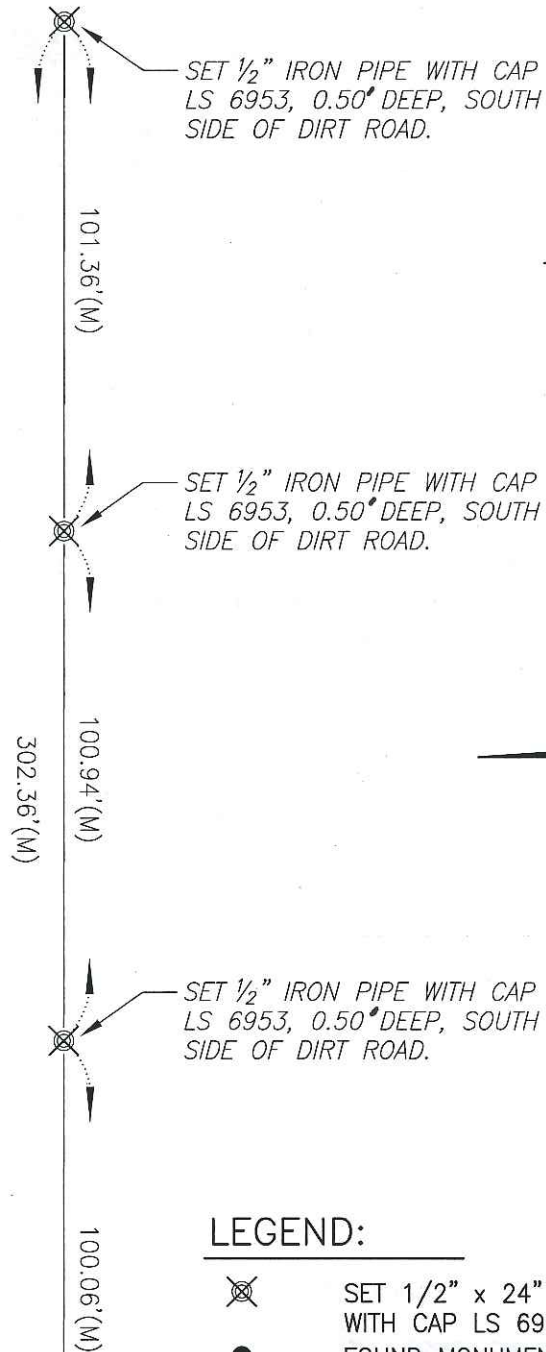
This Corner Record was received SEPTEMBER 9, 2011 and examined and filed OCTOBER 20, 2011.

Signed Thomas M. Gau P.L.S. or R.C.E. No. 26994

Title COUNTY SURVEYOR

County Surveyors Comment _____





REFERENCES:

(R1) P.M. 9-234, S.J.C.R.



NOT TO SCALE

LEGEND:



SET 1/2" x 24" IRON PIPE
WITH CAP LS 6953



FOUND MONUMENT AS NOTED.

S.J.C.R.

DENOTES SAN JOAQUIN COUNTY RECORDS

P.M.

DENOTES PARCEL MAP, BOOK-PAGE, S.J.C.R.

(M)

MEASURED DISTANCE. ALL DISTANCES ARE MEASURED
UNLESS NOTED OTHERWISE.

FOUND 3/4" REBAR,
NOT TAGGED. (R1)

