

CORNER RECORD

Document Number CR 11-140

City of LATHROP County of SAN JOAQUIN, California

Brief Legal Description 1/4 CORNER COMMON TO SECTIONS 25 & 36, AND THE NORTHEAST CORNER SECTION 36, T.1S., R.6E., M.D.B.&M.

COORDINATES (Optional)

SEC 25	SEC 30
SEC 36	SEC 31

Government Corner ☒ Control ☐
 Meander ☐ Property ☐
 Rancho ☐ Other ☐
 Date of Survey 07-28-2011

N. _____
 E. _____
 Zone _____ NAD27 ☐ NAD83 ☐
 NAD83 Epoch _____
 Elev. _____
 Vert. Datum: NGVD29 ☐ NAVD88 ☐
 Meas. Units: Metric ☐ Imperial ☐

T1S, R6E & R7E

Corner - Left as found ☐ Found and tagged ☐ Established ☐ Reestablished ☒ Rebuilt ☐

Identification and type of corner found: Evidence used to identify or procedure used to establish or reestablished the corner:
RR SPIKE AT THE 1/4 CORNER COMMON TO SECTIONS 25 & 36 AND THE BOLT & WASHER AT THE
NORTHEAST CORNER OF SECTION 36, T.1S., R.6E., M.D.B.&M. WERE DESTROYED DURING CONSTRUCTION.
FOUND MONUMENTS AS SHOWN ON RECORD OF SURVEY FILED BOOK 33 OF SURVEYS AT PAGE 133,
SAN JOAQUIN COUNTY RECORDS.

A description of the physical condition of the monument as found and as set or reset: _____
SET MONUMENT FROM MONUMENTS AS SHOWN ON PAGE 2.

This Corner Record was prepared by me or under my direction in conformance with the Land Surveyors' Act on AUGUST 3, 2011.

Signed [Signature] L.S. 6953



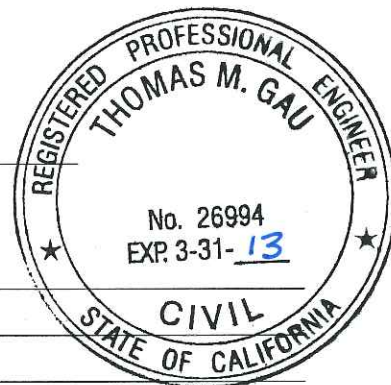
COUNTY SURVEYOR'S STATEMENT

This Corner Record was received SEPTEMBER 9, 2011 and examined and filed SEPTEMBER 14, 2011.

Signed Thomas M. Gau P.L.S. or R.C.E. No. 26994

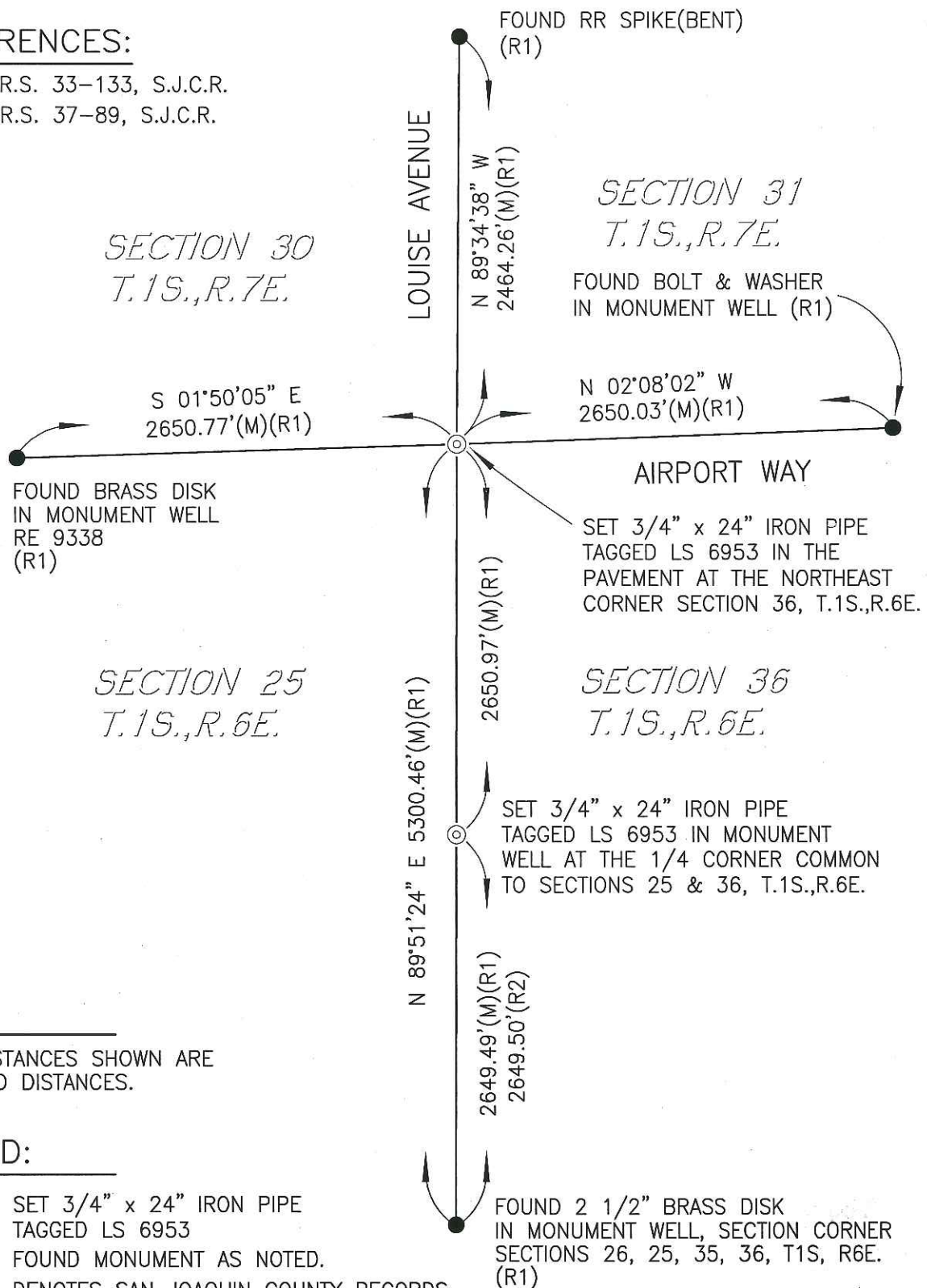
Title COUNTY SURVEYOR

County Surveyors Comment _____



REFERENCES:

- (R1) R.S. 33-133, S.J.C.R.
 (R2) R.S. 37-89, S.J.C.R.



NOTE:

1. ALL DISTANCES SHOWN ARE GROUND DISTANCES.

LEGEND:

- ⊙ SET 3/4" x 24" IRON PIPE TAGGED LS 6953
- FOUND MONUMENT AS NOTED.
- S.J.C.R. DENOTES SAN JOAQUIN COUNTY RECORDS
- R.S. DENOTES RECORD OF SURVEY, BOOK-PAGE, S.J.C.R.
- (M) MEASURED DISTANCE. ALL DISTANCES ARE MEASURED UNLESS NOTED OTHERWISE.



NOT TO SCALE