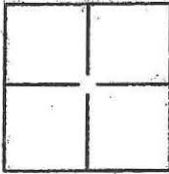


# CORNER RECORD

Document Number CR 11-131  
City of \_\_\_\_\_ County of San Joaquin, California

Brief Legal Description THE SOUTHWEST CORNER OF LOT 19 PER M & P 1-66 AND SHOWN ON RECORD OF SURVEY 16-79 IN SECTION 15 T.2N.R.8E. M.D.B.&M.



## CORNER TYPE

Government Corner ☐ Control ☐  
Meander ☐ Property ☒  
Rancho ☐ Other ☐

Date of Survey 7/7/11

## COORDINATES(Optional)

N: \_\_\_\_\_  
E: \_\_\_\_\_  
Zone: \_\_\_\_\_ NAD27 ☐ NAD83 ☐  
NAD83 Epoch \_\_\_\_\_  
Elev: \_\_\_\_\_  
Vert. Datum: NGVD29 ☐ NADV88 ☐  
Meas. Units: Metric ☐ Imperial ☐

Corner - Left as found ☒ Found and tagged ☐ Established ☐ Reestablished ☐ Rebuilt ☐

Identification and type of corner found: Evidence used to identify or procedure used to establish or reestablish the corner:

I found two monuments along the north right-of-way of State Highway Route 26 and another monument on the west right-of-way of the abandoned Howard Street. One of the monuments was not of record.

A description of the physical condition of the monument as found and as set or reset: The found monuments were in satisfactory condition and the distances measured between the monuments were reasonable. My client is afraid they may get lost during the construction of a building and I may need to re-set them in the future.

## SURVEYOR'S STATEMENT

This Corner Record was prepared by me or under my direction in conformance with the Land Surveyor's Act on July 7, 2011.

Signed Joe Murphy P.L.S. or R.C.E. No.: 7269

## COUNTY SURVEYOR'S STATEMENT

This Corner Record was received September 6, 2011 and examined and filed September 8, 2011.

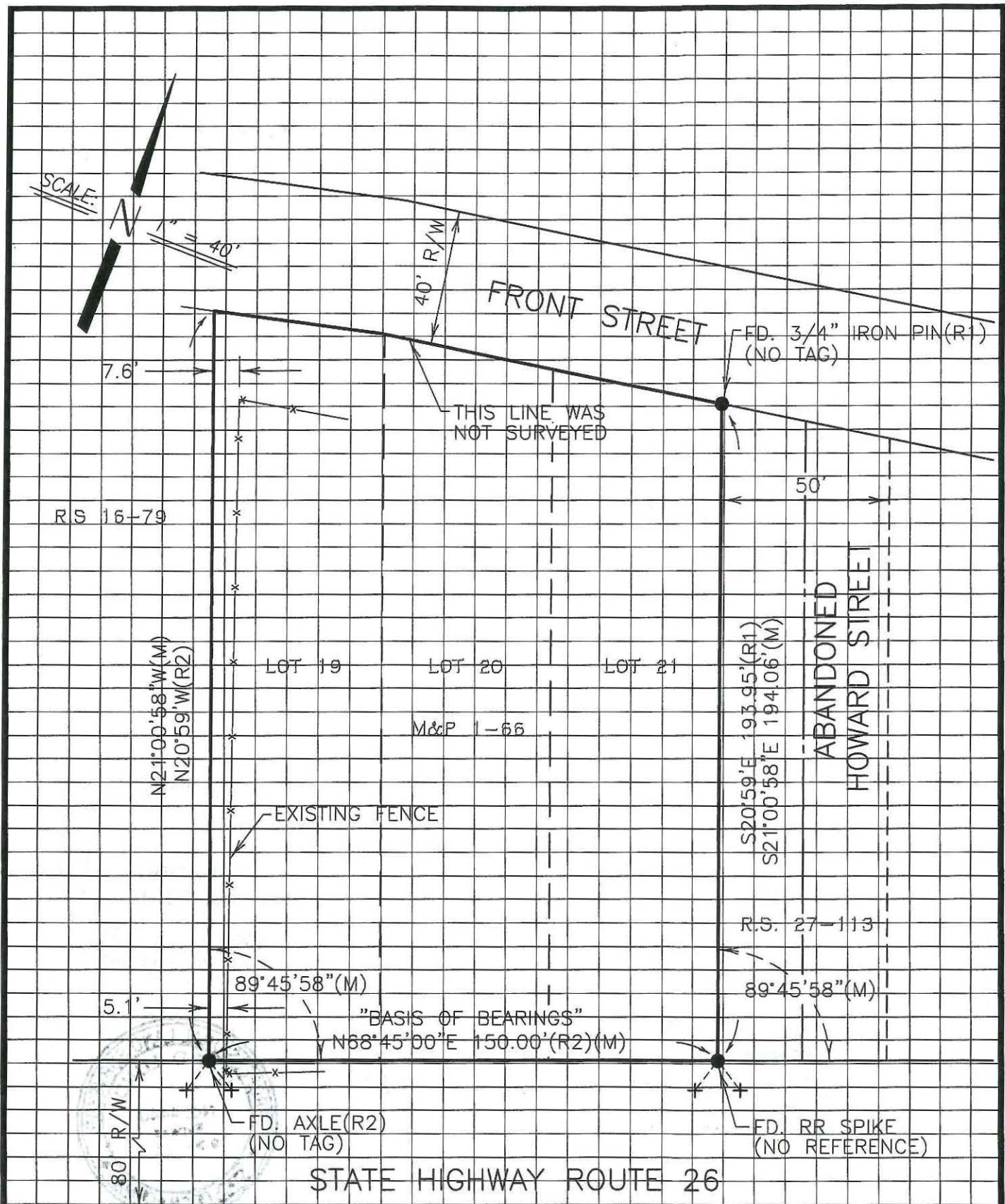
Signed Jeff D. Lund P.L.S. or R.C.E. No.: 4440

Title Assistant County Surveyor

County Surveyor's Comment \_\_\_\_\_







## LEGEND

—	DIMENSION POINT	FD.	FOUND
●	FOUND MONUMENT AS NOTED	(R1)	R.S. 27-113
(M)	MEASURED	(R2)	R.S. 16-79
x x	EXISTING FENCE	R.S.	RECORD OF SURVEY
+	SET SPIKE FOR 2' SWING TIE	M&P	MAPS AND PLATS