

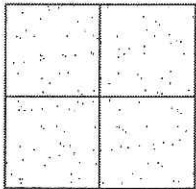
# CORNER RECORD

Document Number CR 11-117  
County of San Joaquin, California

City of \_\_\_\_\_

Brief Legal Description FRENCH CAMP ROAD 3419'± SOUTHEAST OF JACK TONE ROAD

(WITHIN SECTION 30, TOWNSHIP 1 SOUTH, RANGE 8 EAST)



## CORNER TYPE

Government Corner ☐ Control ☐  
Meander ☐ Property ☐  
Rancho ☐ Other ☒

Date of Survey November 24, 2009

## COORDINATES (Optional)

N. \_\_\_\_\_  
E. \_\_\_\_\_  
Zone \_\_\_\_\_ NAD27 ☐ NAD83 ☐  
NAD83 Epoch \_\_\_\_\_  
Elev. \_\_\_\_\_  
Vert. Datum: NGVD29 ☐ NAVD88 ☐  
Meas. Units: Metric ☐ Imperial ☒

Corner - Left as found ☐ Found and tagged ☐ Established ☐ Reestablished ☒ Rebuilt ☐

Identification and type of corner found: Evidence used to identify or procedure used to establish or reestablish the corner:  
SEE SKETCH ON BACKSIDE.

A description of the physical condition of the monument as found and as set or reset: \_\_\_\_\_  
SEE SKETCH ON BACKSIDE.

## SURVEYOR'S STATEMENT

This Corner Record was prepared by me or under my direction in conformance with  
the Land Surveyors' Act on July 28, 2011.

Signed James E. Hart P.L.S. Number 8657

## COUNTY SURVEYOR'S STATEMENT

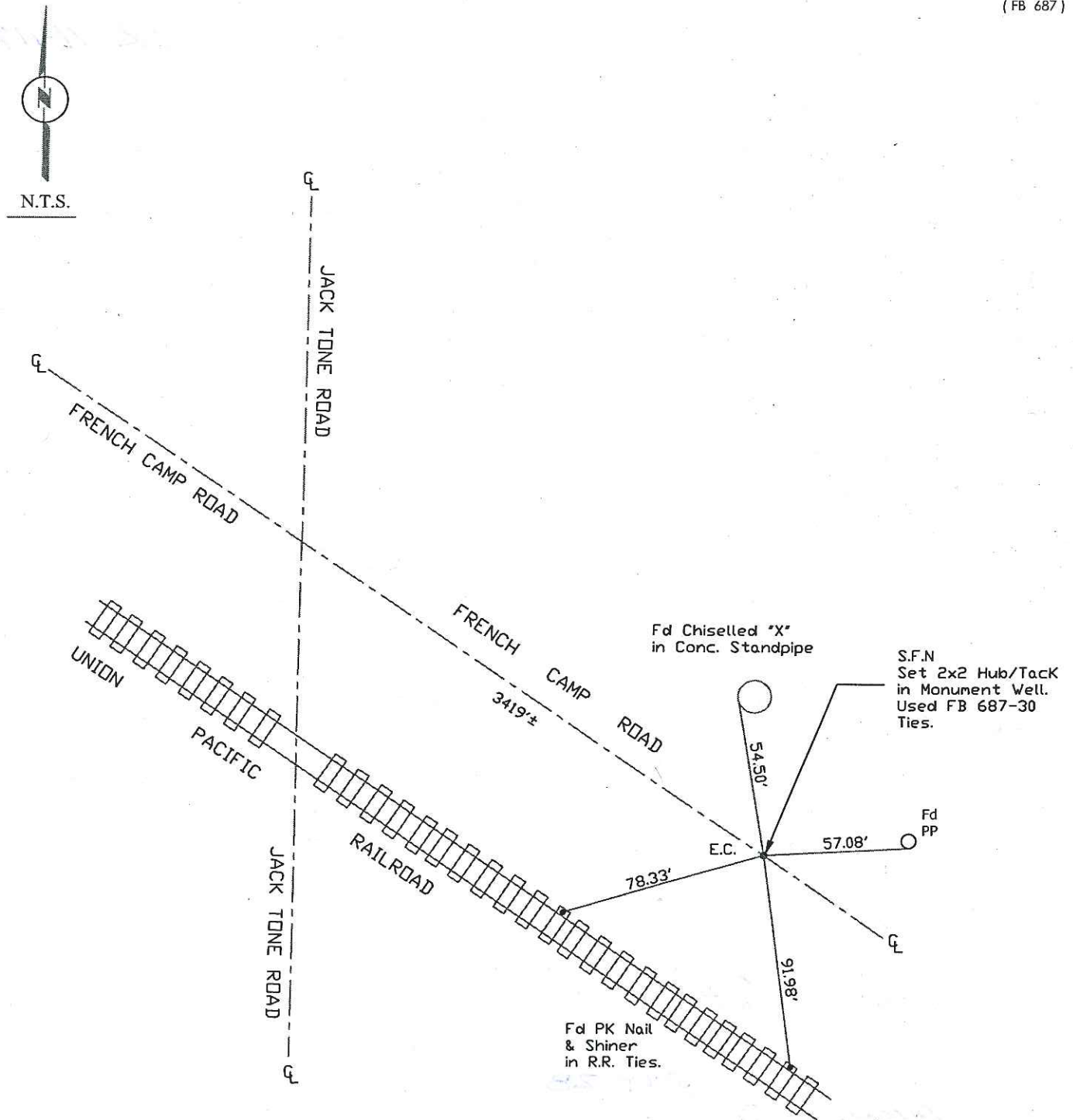
This Corner Record was received JULY 28, 2011 and examined  
and filed AUGUST 3, 2011.

Signed Thomas M. Gau R.C.E. No. 26994

Title County Surveyor

County Surveyor's Comment \_\_\_\_\_  
THIS CORNER RECORD IS NOT IN COMPLIANCE WITH BOARD RULE 464(c)  
REGARDING SUBMITTAL WITHIN 90 DAYS OF SURVEY.





Note: Found Monuments are not tagged nor of Record, Unless otherwise noted.

"No Attempt Was Made to Verify the Monument(s)"

Fd=Found  
 FB=Field Book  
 E.C.=End of Curve  
 GP=Guy Post  
 JP=Joint Pole  
 PP=Power Pole  
 SP=Service Pole  
 TP=Telephone Pole  
 S.F.N=Searched Found Nothing  
 N.T.S.=Not To Scale  
 Fd=Conc. Nail with Brass Washer Stamped  
 "S.J. Co.", unless otherwise noted