

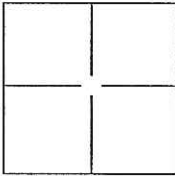
CORNER RECORD

City of STOCKTON

Document Number CR 11-109

County of SAN JOAQUIN, California

Brief Legal Description ST. ANDREWS DRIVE, M.&P. 35-72, SEC. 36, T.2N., R.5E., M.D.B.&M.



CORNER TYPE

Government Corner ☐ Control ☐
Meander ☐ Property ☐
Rancho ☐ Other ☒

Date of Survey MAY 2, 2011

COORDINATES(Optional)

N. _____
E. _____
Zone _____ NAD27 ☐ NAD83 ☐
NAD83 Epoch _____
Elev. _____
Vert. Datum: NGVD29 ☐ NADV88 ☐
Meas. Units: Metric ☐ Imperial ☐

Corner - Left as found ☒ Found and tagged ☐ Established ☐ Reestablished ☐ Rebuilt ☐

Identification and type of corner found: Evidence used to identify or procedure used to establish or reestablish the corner:

SEE PLAT ON BACK

A description of the physical condition of the monument as found and as set or reset:

FOUND 3/4" REBAR WITH CAP ATTACHED AND STAMPED "LS 4334" IN MONUMENT WELL
AND CHISELED CROSS AT 2.00' OFFSET ON LOT LINE PROJECTION PER M.&P. 35-72.

SURVEYOR'S STATEMENT

This Corner Record was prepared by me or under my direction in conformance with

the Land Surveyor's Act on MAY 27, 2011.

Signed William M. Koch P.L.S. or R.G.E. No.: 8092



COUNTY SURVEYOR'S STATEMENT

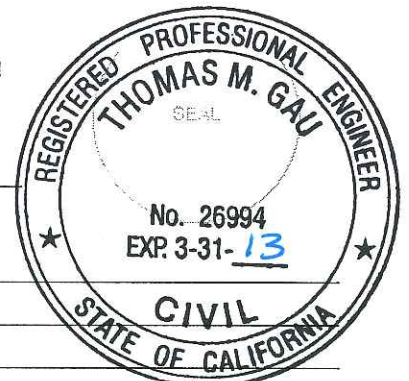
This Corner Record was received JULY 18, 2011 and examined

and filed JULY 27, 2011.

Signed Thomas M. Gau P.L.S. or R.C.E. No.: 26994

Title COUNTY SURVEYOR

County Surveyor's Comment _____



LEGEND:

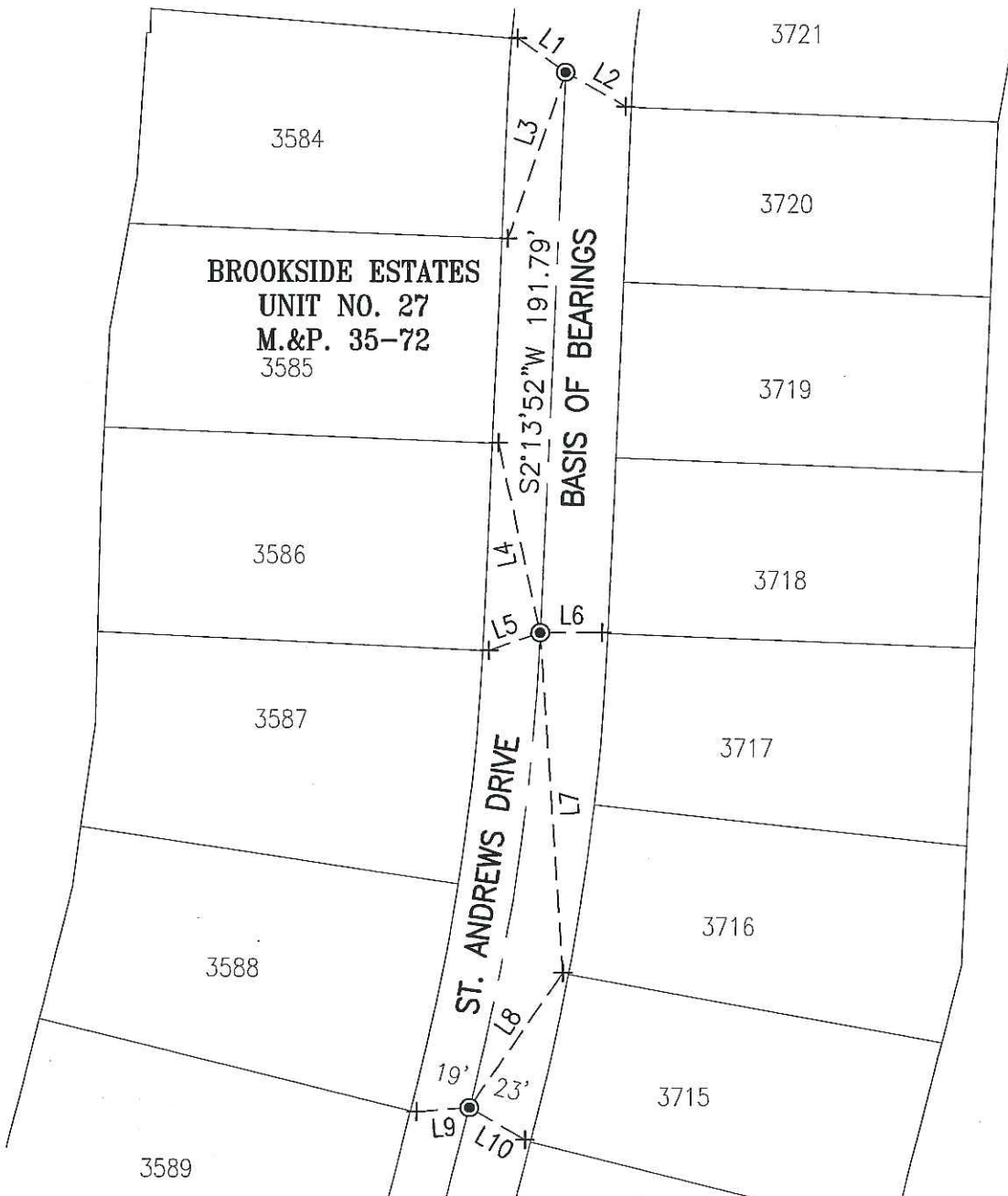
M.&P. BOOK OF MAPS AND PLATS, VOLUME-PAGE

+ FOUND CHISELED CROSS ON 2' OFFSET PER M.&P. 35-72

● FOUND 3/4" REBAR W/CAP ATTACHED AND STAMPED "LS 4334" IN MONUMENT WELL PER M.&P. 35-72

BASIS OF BEARINGS:

THE CENTERLINE OF ST. ANDREWS DRIVE WHICH BEARS S02°13'52"W PER M.&P. 35-72



LINE TABLE		
LINE #	DIRECTION	LENGTH
L1	S54°27'33"E	20.04'
L2	N60°15'56"W	23.66'
L3	N18°37'20"E	60.13'
L4	S12°37'15"E	66.32'
L5	N70°35'02"E	18.34'

LINE TABLE		
LINE #	DIRECTION	LENGTH
L6	S89°53'53"W	21.03'
L7	N4°05'24"W	116.27'
L8	S34°14'11"W	55.81'
L9	N85°12'37"E	17.97'
L10	N59°32'03"W	21.89'



0' 30' 60' 120'

SCALE: 1"=60'