

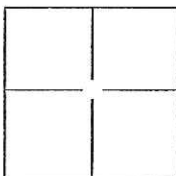
CORNER RECORD

Document Number CR 11-108

City of STOCKTON

County of SAN JOAQUIN, California

Brief Legal Description ST. ANDREWS DRIVE, M.&P. 35-72, SEC. 36, T.2N., R.5E., M.D.B.&M.



CORNER TYPE

Government Corner ☐ Control ☐
Meander ☐ Property ☐
Rancho ☐ Other ☒

Date of Survey MAY 2, 2011

COORDINATES(Optional)

N. _____
E. _____
Zone _____ NAD27 ☐ NAD83 ☐
NAD83 Epoch _____
Elev. _____
Vert. Datum: NGVD29 ☐ NADV88 ☐
Meas. Units: Metric ☐ Imperial ☐

Corner - Left as found ☒ Found and tagged ☐ Established ☐ Reestablished ☐ Rebuilt ☐

Identification and type of corner found: Evidence used to identify or procedure used to establish or reestablish the corner:

SEE PLAT ON BACK

A description of the physical condition of the monument as found and as set or reset: _____

FOUND 3/4" REBAR WITH CAP ATTACHED AND STAMPED "LS 4334" IN MONUMENT WELL
AND CHISELED CROSS AT 2.00' OFFSET ON LOT LINE PROJECTION PER M.&P. 35-72.

SURVEYOR'S STATEMENT

This Corner Record was prepared by me or under my direction in conformance with

the Land Surveyor's Act on MAY 27, 2011.

Signed [Signature] P.L.S. or R.G.E. No.: 8092



COUNTY SURVEYOR'S STATEMENT

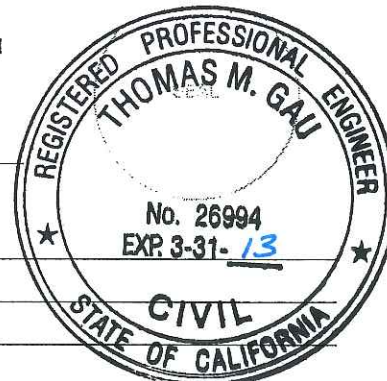
This Corner Record was received JULY 18, 2011 and examined

and filed JULY 27, 2011.

Signed [Signature] P.L.S. or R.C.E. No.: 26994

Title COUNTY SURVEYOR

County Surveyor's Comment _____



LEGEND:

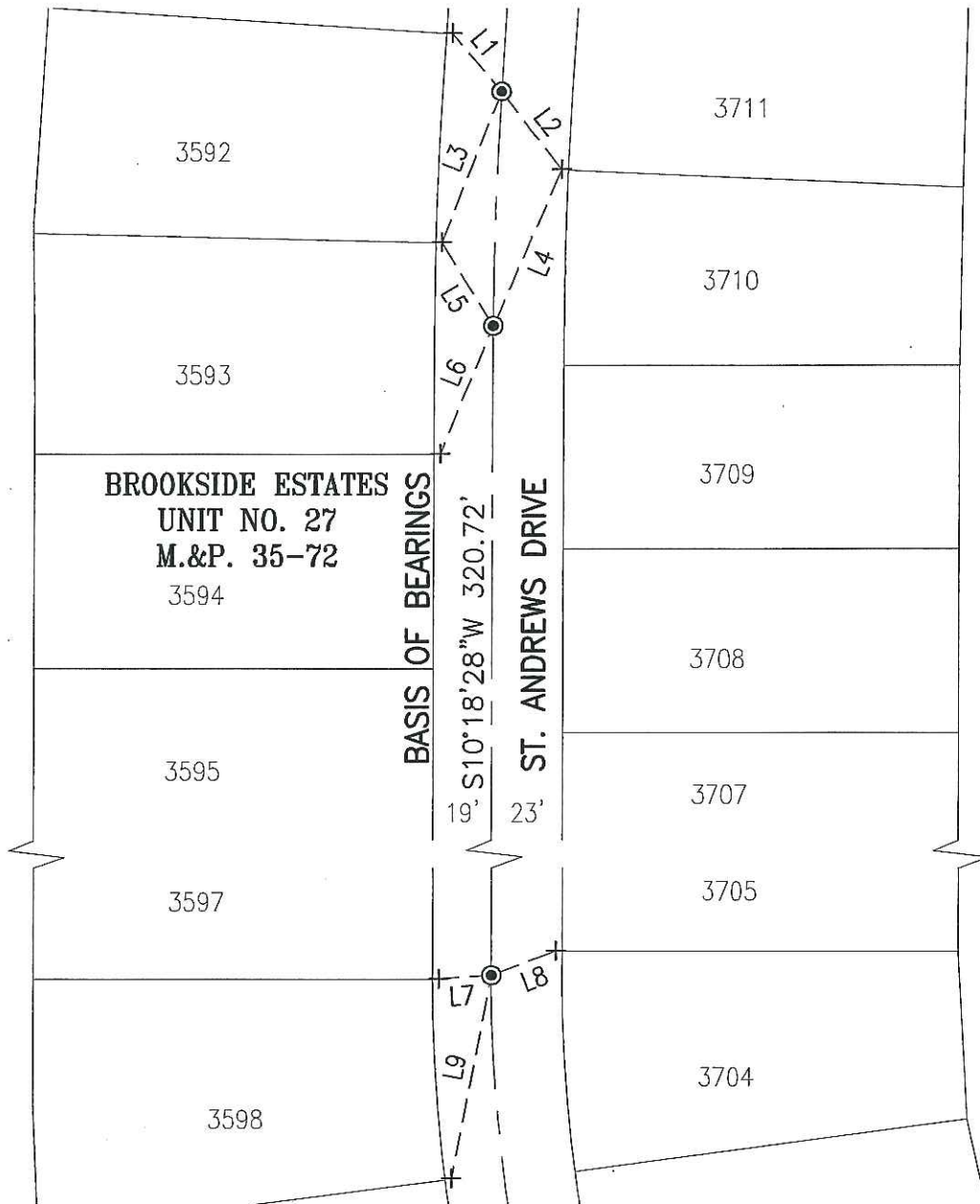
M.&P. BOOK OF MAPS AND PLATS, VOLUME—PAGE

+ FOUND CHISELED CROSS ON 2' OFFSET PER M.&P. 35-72

© FOUND 3/4" REBAR W/CAP ATTACHED AND STAMPED "LS 4334" IN MONUMENT WELL PER M.&P. 35-72

BASIS OF BEARINGS:

THE CENTERLINE OF ST. ANDREWS DRIVE WHICH BEARS S10°18'28"W PER M.&P. 35-72



LINE TABLE		
LINE #	DIRECTION	LENGTH
L1	S29°09'11"E	24.79'
L2	N27°16'25"W	32.28'
L3	N31°25'07"E	53.06'
L4	S33°40'10"W	55.84'
L5	S21°02'21"E	32.02'

LINE TABLE		
LINE #	DIRECTION	LENGTH
L6	N32°21'39"E	45.22'
L7	S83°39'03"E	17.07'
L8	S79°23'11"W	22.49'
L9	N21°07'23"E	67.69'

