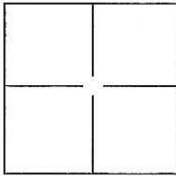


CORNER RECORD

Document Number

C.R. 11-107City of STOCKTONCounty of SAN JOAQUIN, CaliforniaBrief Legal Description ST. ANDREWS DRIVE, M.&P. 35-72, SEC. 36, T.2N., R.5E., M.D.B.&M.**CORNER TYPE**

Government Corner ☐ Control ☐
Meander ☐ Property ☐
Rancho ☐ Other ☒

Date of Survey MAY 2, 2011**COORDINATES(Optional)**

N. _____
E. _____
Zone _____ NAD27 ☐ NAD83 ☐
NAD83 Epoch _____
Elev. _____
Vert. Datum: NGVD29 ☐ NADV88 ☐
Meas. Units: Metric ☐ Imperial ☐

Corner - Left as found ☒ Found and tagged ☐ Established ☐ Reestablished ☐ Rebuilt ☐

Identification and type of corner found: Evidence used to identify or procedure used to establish or reestablish the corner:

SEE PLAT ON BACK

A description of the physical condition of the monument as found and as set or reset:

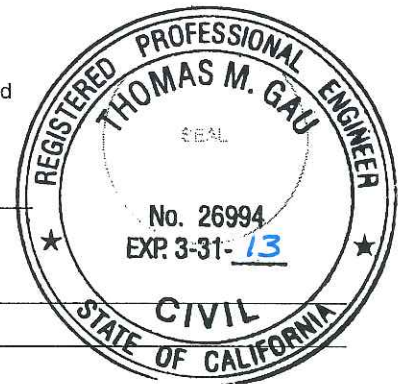
FOUND 3/4" REBAR WITH CAP ATTACHED AND STAMPED "LS 4334" IN MONUMENT WELL
AND CHISELED CROSS AT 2.00' OFFSET ON LOT LINE PROJECTION PER M.&P. 35-72.

SURVEYOR'S STATEMENT

This Corner Record was prepared by me or under my direction in conformance with

the Land Surveyor's Act on MAY 27, 2011.Signed William M. Koch P.L.S. or R.G.E. No.: 8092**COUNTY SURVEYOR'S STATEMENT**This Corner Record was received JULY 18, 2011 and examinedand filed AUGUST 8, 2011.Signed Thomas M. Gau P.L.S. or R.C.E. No.: 26994Title COUNTY SURVEYOR

County Surveyor's Comment _____



LEGEND:

M.&P. BOOK OF MAPS AND PLATS, VOLUME-PAGE

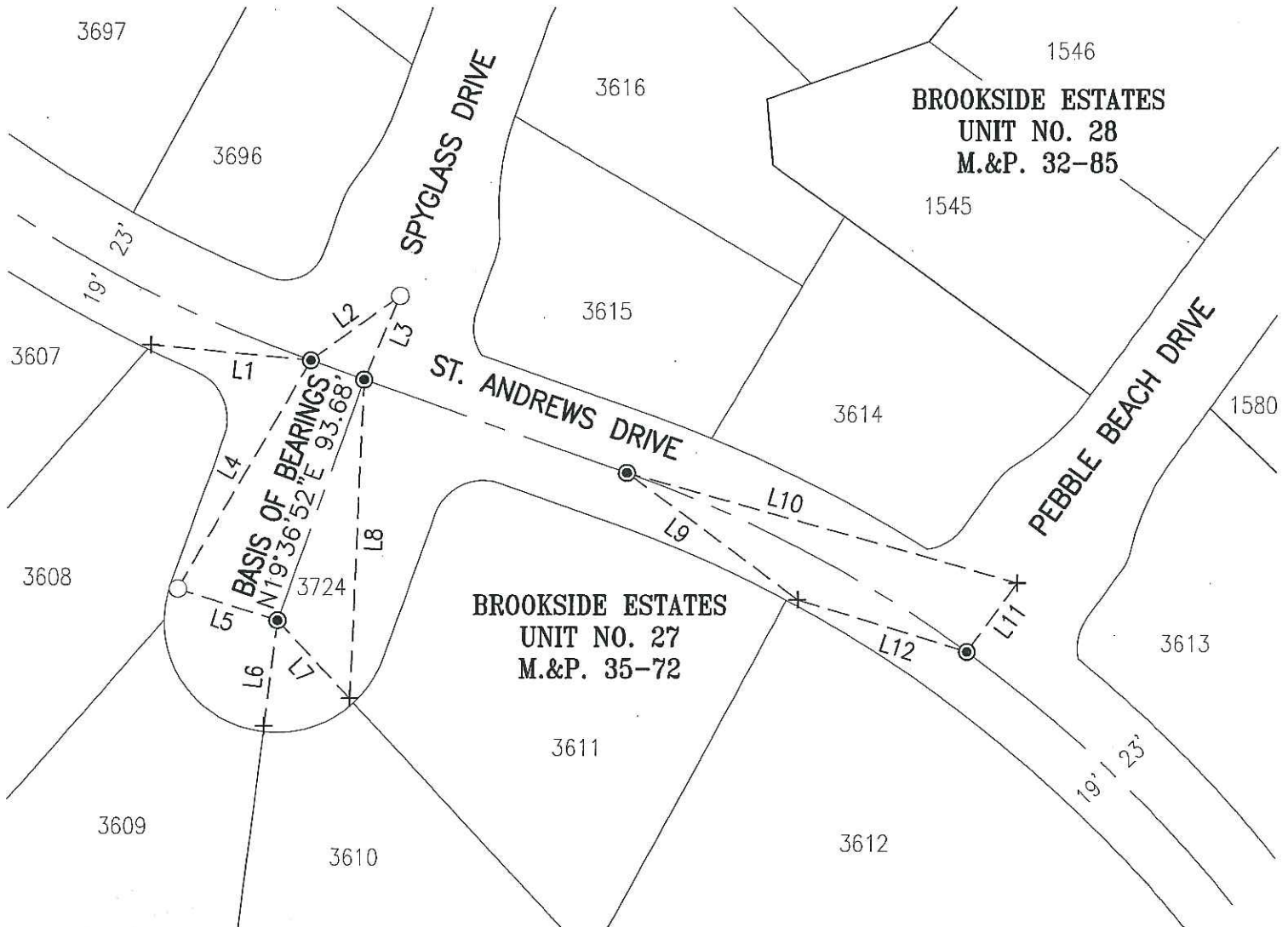
+ FOUND CHISELED CROSS ON 2' OFFSET PER M.&P. 35-72

● FOUND 3/4" REBAR W/CAP ATTACHED AND STAMPED "LS 4334" IN MONUMENT WELL PER M.&P. 35-72

○ SET PK NAIL W/TAG STAMPED "LS 8092"

BASIS OF BEARINGS:

THE CENTERLINE OF SPYGLASS DRIVE WHICH BEARS N19°36'52"E PER M.&P. 35-72



LINE TABLE

LINE #	DIRECTION	LENGTH
L1	S84°20'03"E	58.18'
L2	S54°06'59"W	40.21'
L3	S22°55'53"W	33.29'
L4	N29°45'15"E	96.45'
L5	S72°09'47"E	37.85'
L6	N7°03'00"E	38.98'

LINE TABLE

LINE #	DIRECTION	LENGTH
L7	N42°52'04"W	39.04'
L8	N2°23'43"E	116.96'
L9	N53°20'21"W	77.81'
L10	N74°15'47"W	148.72'
L11	S36°14'59"W	31.31'
L12	S72°54'25"E	65.09'



SCALE: 1"=60'