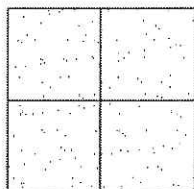


# CORNER RECORD

Document Number CR-11-102  
 County of San Joaquin, California

Brief Legal Description MEATH DRIVE AT FOPPIANO LANE

(WITHIN SECTION 18, TOWNSHIP 2 NORTH, RANGE 7 EAST, MOUNT DIABLO BASE & MERIDIAN)



## CORNER TYPE

Government Corner ☐ Control ☐  
 Meander ☐ Property ☐  
 Rancho ☐ Other ☒

Date of Survey September 15, 2010

## COORDINATES (Optional)

N. \_\_\_\_\_  
 E. \_\_\_\_\_  
 Zone \_\_\_\_\_ NAD27 ☐ NAD83 ☐  
 NAD83 Epoch \_\_\_\_\_  
 Elev. \_\_\_\_\_  
 Vert. Datum: NGVD29 ☐ NAVD88 ☐  
 Meas. Units: Metric ☐ Imperial ☒

Corner - Left as found ☒ Found and tagged ☐ Established ☐ Reestablished ☐ Rebuilt ☐

Identification and type of corner found: Evidence used to identify or procedure used to establish or reestablish the corner:  
SEE SKETCH ON BACKSIDE.

A description of the physical condition of the monument as found and as set or reset:  
SEE SKETCH ON BACKSIDE.

## SURVEYOR'S STATEMENT

This Corner Record was prepared by me or under my direction in conformance with the Land Surveyors' Act on 7/11, 2011.

Signed James E. Hart P.L.S. Number 8657

## COUNTY SURVEYOR'S STATEMENT

This Corner Record was received JULY 11, 2011 and examined and filed JULY 22, 2011.

Signed Thomas M. Gau R.C.E. No. 26994

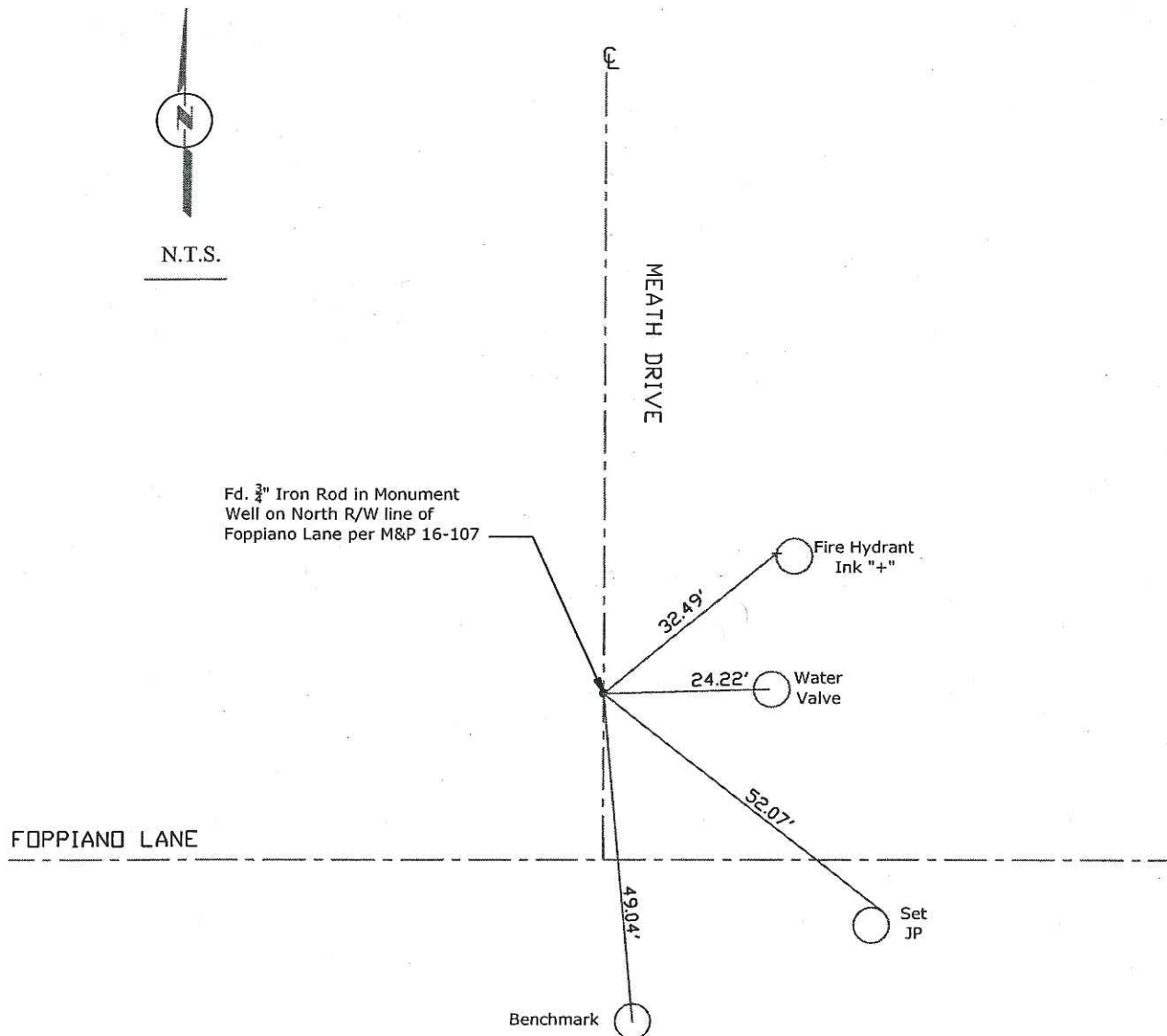
Title County Surveyor

County Surveyor's Comment \_\_\_\_\_

THIS CORNER RECORD IS NOT IN COMPLIANCE WITH BOARD RULE 464(c)

REGARDING SUBMITTAL WITHIN 90 DAYS OF SURVEY.





Note: Found Monuments are not tagged  
unless otherwise noted.

"No Attempt Was Made to Verify the Monument(s)"

Set=Conc. Nail with Brass Washer Stamped

"S.J. Co.", unless otherwise noted

Fd.=Found Conc. Nail with Brass Washer Stamped

"S.J. Co.", unless otherwise noted

FP=Fence Post

JP=Joint Pole

LP=Light Pole

PP=Power Pole

GP=Guy Pole

SP=Service Pole

TP=Telephone Pole

S.F.N.=Searched Found Nothing

N.T.S.=Not To Scale

M&P=Maps & Plats

PM=Parcel Map

RS=Record of Survey

FB=Field Book