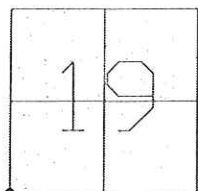


CORNER RECORD

Document Number CR 11-76
 County of San Joaquin, California

City of _____

Brief Legal Description LONE TREE ROAD @ SEXTON ROAD



T1S R9E

CORNER TYPE

Government Corner ☒ Control ☐
 Meander ☐ Property ☐
 Rancho ☐ Other ☐

Date of Survey April 1, 2011

COORDINATES (Optional)

N. _____
 E. _____
 Zone _____ NAD27 ☐ NAD83 ☐
 NAD83 Epoch _____
 Elev. _____
 Vert. Datum: NGVD29 ☐ NAVD88 ☐
 Meas. Units: Metric ☐ Imperial ☒

Corner - Left as found ☒ Found and tagged ☐ Established ☐ Reestablished ☐ Rebuilt ☐

Identification and type of corner found: Evidence used to identify or procedure used to establish or reestablish the corner:
SEE SKETCH ON BACKSIDE.

A description of the physical condition of the monument as found and as set or reset:
SEE SKETCH ON BACKSIDE.

SURVEYOR'S STATEMENT

This Corner Record was prepared by me or under my direction in conformance with
 the Land Surveyors' Act on May 23, 2011.

Signed [Signature] P.L.S. Number 8470

COUNTY SURVEYOR'S STATEMENT

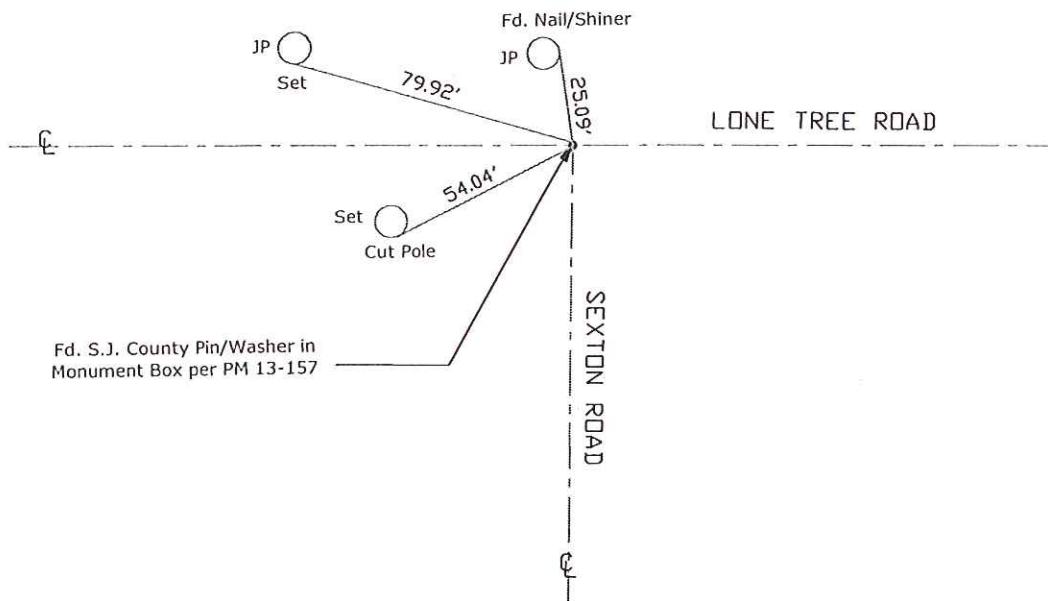
This Corner Record was received MAY 23, 2011 and examined
 and filed JUNE 9, 2011.

Signed [Signature] R.C.E. No. 26994

Title County Surveyor

County Surveyor's Comment _____





Note: Found Monuments are not tagged unless otherwise noted.

"No Attempt Was Made to Verify the Monument(s)"

Set=Conc. Nail with Brass Washer Stamped

"S.J. Co.", unless otherwise noted

Fd.=Found Conc. Nail with Brass Washer Stamped

"S.J. Co.", unless otherwise noted

FP=Fence Post

JP=Joint Pole

LP=Light Pole

PP=Power Pole

GP=Guy Pole

SP=Service Pole

TP=Telephone Pole

S.F.N.=Searched Found Nothing

N.T.S.=Not To Scale

M&P=Maps & Plots

PM=Parcel Map

RS=Record of Survey

FB=Field Book