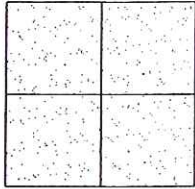


# CORNER RECORD

Document Number CR 11-65  
County of San Joaquin, California

Brief Legal Description LEONARDINI ROAD 1496'± EAST OF CHERRYLAND AVENUE  
(WITHIN SECTION 62, C.M. WEBER GRANT)



## CORNER TYPE

Government Corner ☐ Control ☐  
Meander ☐ Property ☐  
Rancho ☐ Other ☒  
Date of Survey December 1, 2010

## COORDINATES (Optional)

N. \_\_\_\_\_  
E. \_\_\_\_\_  
Zone \_\_\_\_\_ NAD27 ☐ NAD83 ☐  
NAD83 Epoch \_\_\_\_\_  
Elev. \_\_\_\_\_  
Vert. Datum: NGVD29 ☐ NAVD88 ☐  
Meas. Units: Metric ☐ Imperial ☒

Corner - Left as found ☒ Found and tagged ☐ Established ☐ Reestablished ☐ Rebuilt ☐

Identification and type of corner found: Evidence used to identify or procedure used to establish or reestablish the corner:  
SEE SKETCH ON BACKSIDE.

A description of the physical condition of the monument as found and as set or reset: \_\_\_\_\_  
SEE SKETCH ON BACKSIDE.

## SURVEYOR'S STATEMENT

This Corner Record was prepared by me or under my direction in conformance with  
the Land Surveyors' Act on May 18, 2011.

Signed [Signature] P.L.S. Number 8470

## COUNTY SURVEYOR'S STATEMENT

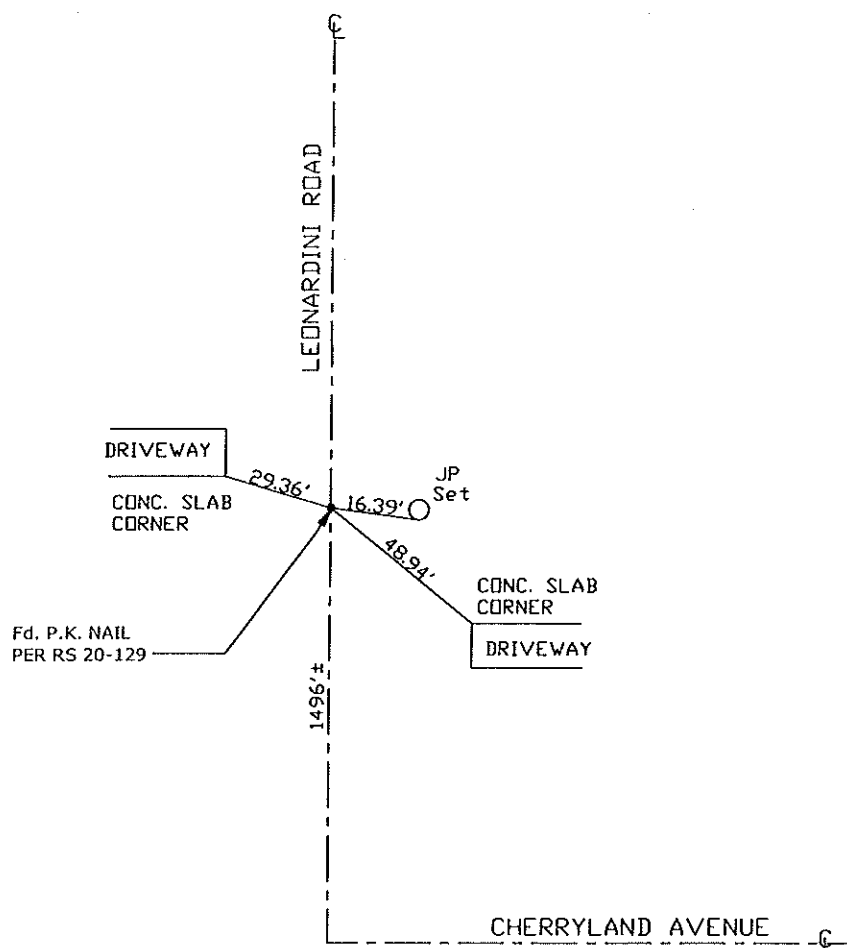
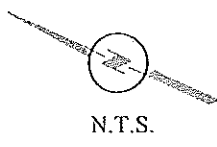
This Corner Record was received MAY 18, 2011 and examined  
and filed MAY 24, 2011.

Signed Thomas M. Gau R.C.E. No. 26994

Title County Surveyor

County Surveyor's Comment \_\_\_\_\_





Note: Found Monuments are not tagged unless otherwise noted.

"No Attempt Was Made to Verify the Monument(s)"

Set=Conc. Nail with Brass Washer Stamped

"S.J. Co.", unless otherwise noted

Fd.=Found Conc. Nail with Brass Washer Stamped

"S.J. Co.", unless otherwise noted

FP=Fence Post

JP=Joint Pole

LP=Light Pole

PP=Power Pole

GP=Guy Pole

SP=Service Pole

TP=Telephone Pole

S.F.N.=Searched Found Nothing

N.T.S.=Not To Scale

M&P=Maps & Plats

PM=Parcel Map

RS=Record of Survey

FB=Field Book