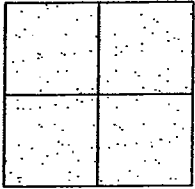


CORNER RECORD

Document Number CR-11-24
County of San Joaquin, California

City of _____

Brief Legal Description LILAC STREET @ WOODS STREET IN TOWN OF WOODBRIDGE
(WITHIN SECTION 34, TOWNSHIP 4 NORTH, RANGE 6 EAST)



CORNER TYPE

Government Corner ☐ Control ☐
Meander ☐ Property ☐
Rancho ☐ Other ☒

Date of Survey January 6, 2011

COORDINATES (Optional)

N. _____
E. _____
Zone _____ NAD27 ☐ NAD83 ☐
NAD83 Epoch _____
Elev. _____
Vert. Datum: NGVD29 ☐ NAVD88 ☐
Meas. Units: Metric ☐ Imperial ☒

Corner - Left as found ☒ Found and tagged ☐ Established ☐ Reestablished ☐ Rebuilt ☐

Identification and type of corner found: Evidence used to identify or procedure used to establish or reestablish the corner:
SEE SKETCH ON BACKSIDE.

A description of the physical condition of the monument as found and as set or reset: _____
SEE SKETCH ON BACKSIDE.

SURVEYOR'S STATEMENT

This Corner Record was prepared by me or under my direction in conformance with
the Land Surveyors' Act on March 1, 2011.

Signed [Signature] P.L.S. Number 8470

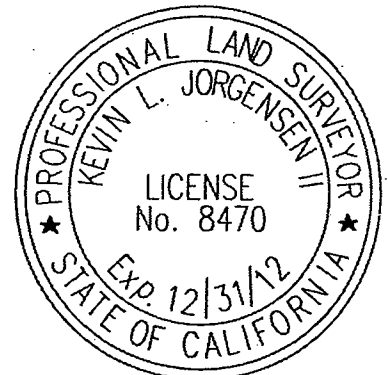
COUNTY SURVEYOR'S STATEMENT

This Corner Record was received MARCH 2, 2011 and examined
and filed MARCH 8, 2011.

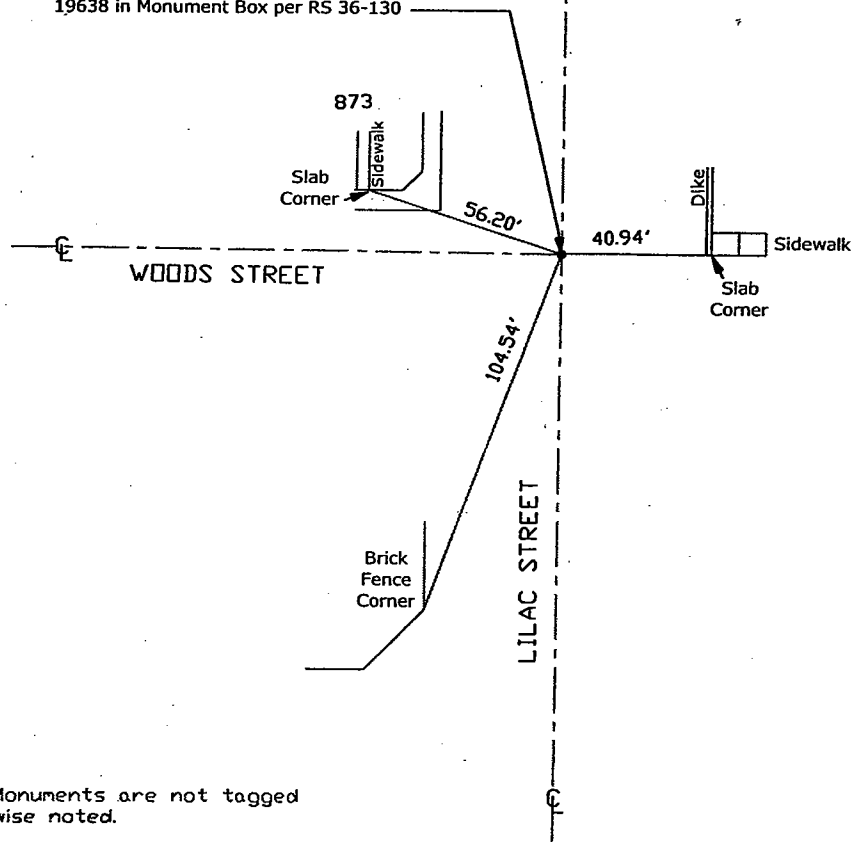
Signed [Signature] R.C.E. No. 26994

Title Interim County Surveyor

County Surveyor's Comment _____



Fd. 3/4" Iron Rod with Cap Stamped RCE
19638 in Monument Box per RS 36-130



"No Attempt Was Made to Verify the Monument(s)"

Fd.=Found Conc. Nail with Brass Washer Stamped
"S.J. Co.", unless otherwise noted

FB=Field Book