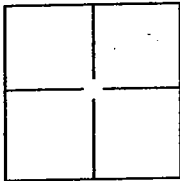


CORNER RECORD

Document Number CR-11-17
County of San Joaquin, California

City of Stockton
Brief Legal Description Lot 344 as shown on M.&P. 30-72 S.J.C.R.



CORNER TYPE

Government Corner ☐ Control ☐
Meander ☐ Property ☒
Rancho ☐ Other ☐

Date of Survey November 20, 2010

COORDINATES(Optional)

N. _____
E. _____
Zone _____ NAD27 ☐ NAD83 ☐
NAD83 Epoch _____
Elev. _____
Vert. Datum: NGVD29 ☐ NADV88 ☐
Meas. Units: Metric ☐ Imperial ☒

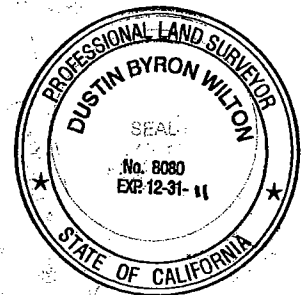
Corner - Left as found ☐ Found and tagged ☐ Established ☐ Reestablished ☒ Rebuilt ☐

Identification and type of corner found: Evidence used to identify or procedure used to establish or reestablish the corner.
See plat on back.

A description of the physical condition of the monument as found and as set or reset:
Set nails tagged "LS 8080".

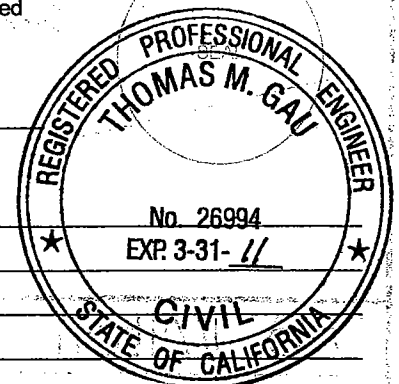
SURVEYOR'S STATEMENT

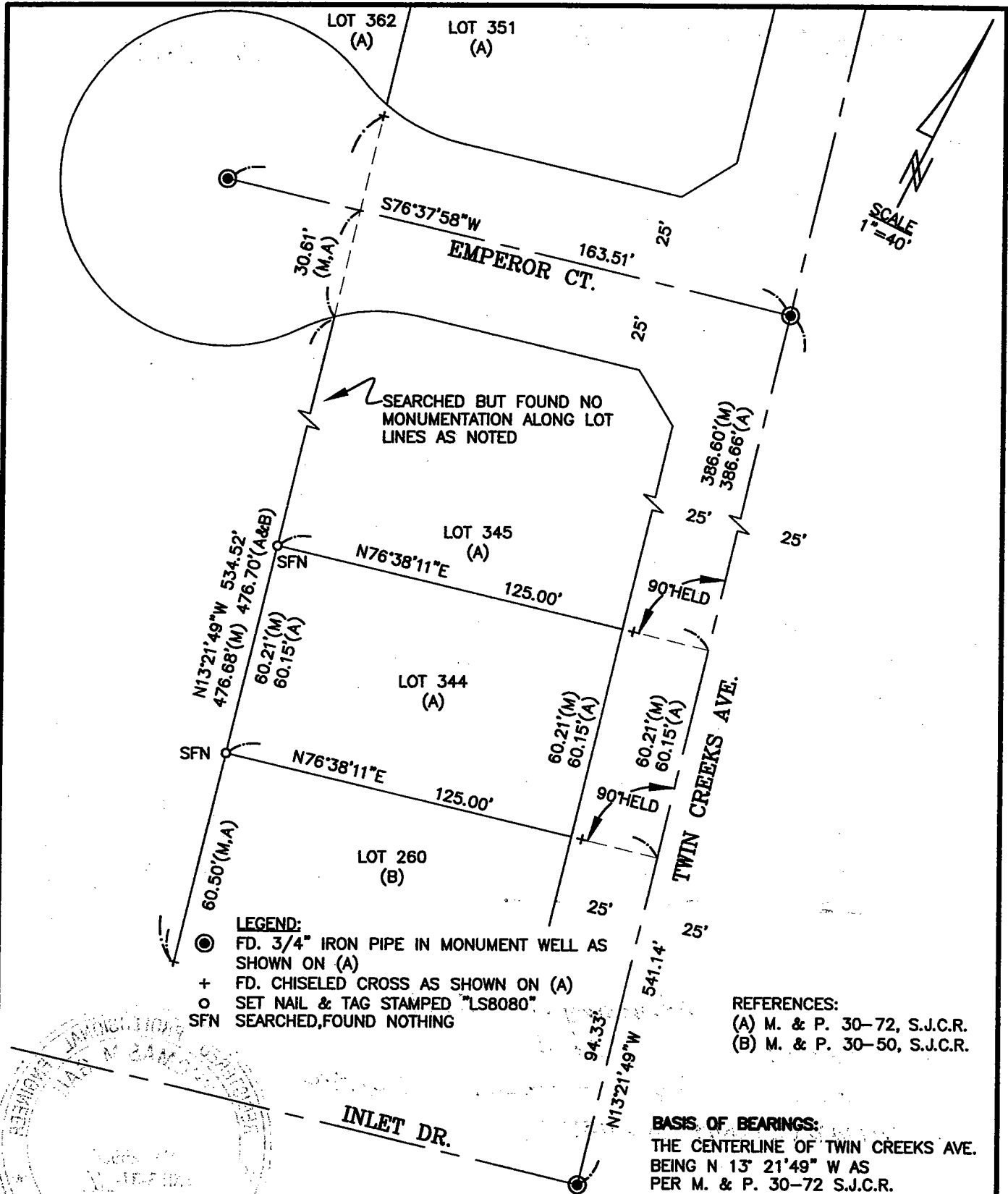
This Corner Record was prepared by me or under my direction in conformance with
the Land Surveyor's Act on February 22, 2011
Signed [Signature] P.L.S. or R.C.E. No.: 8080



COUNTY SURVEYOR'S STATEMENT

This Corner Record was received February 22, 2011 and examined
and filed February 28, 2011
Signed Thomas M. Gau P.L.S. or R.C.E. No.: 26994
Title INTERIM COUNTY SURVEYOR
County Surveyor's Comment _____





D.B. Wilton

LAND SURVEYING

PO BOX 435 LODI CA 95241-0435
(209) 747-0169 dbwsurvey@yahoo.com

PLAT OF LOT 344 ON M. & P. 30-72
S.J.C.R.