

# CORNER RECORD

Document Number

CR-11-16

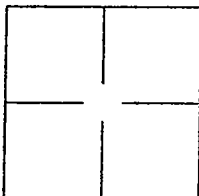
City of \_\_\_\_\_

County of

SAN JOAQUIN

, California

Brief Legal Description

PORTION OF PARCEL "A", 25 SURVEYS 115**CORNER TYPE**Government Corner ☐Control ☐Meander ☐Property ☒Rancho ☐Other ☐Date of Survey DECEMBER 18, 2009**COORDINATES (Optional)**

N \_\_\_\_\_

E \_\_\_\_\_

Zone \_\_\_\_\_

NAD27 ☐NAD83 ☐

NAD83 Epoch \_\_\_\_\_

Elev \_\_\_\_\_

Vert. Datum:

NGVD29 ☐NADV88 ☐

Meas Units:

Metric ☐Imperial ☒**Corner -**Left as found ☐Found and tagged ☐Established ☒Reestablished ☐Rebuilt ☐

Identification and type of corner found: Evidence used to identify or procedure used to establish or reestablish the corner:

SEE SKETCH ON PAGE 2 OF 2

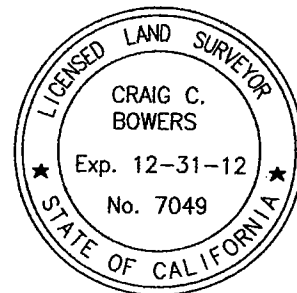
A description of the physical condition of the monument as found and as set or reset: \_\_\_\_\_

SEE SKETCH ON PAGE 2 OF 2**SURVEYOR'S STATEMENT**

This Corner Record was prepared by me or under my direction in conformance with

the Land Surveyors' Act on JANUARY 28, 2011.

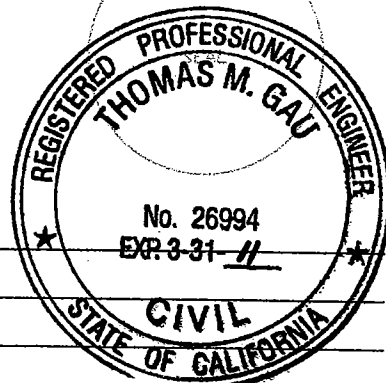
Signed

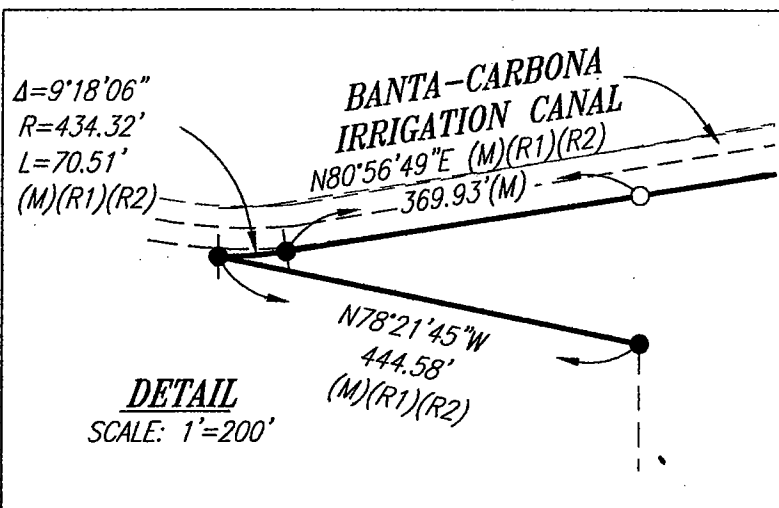
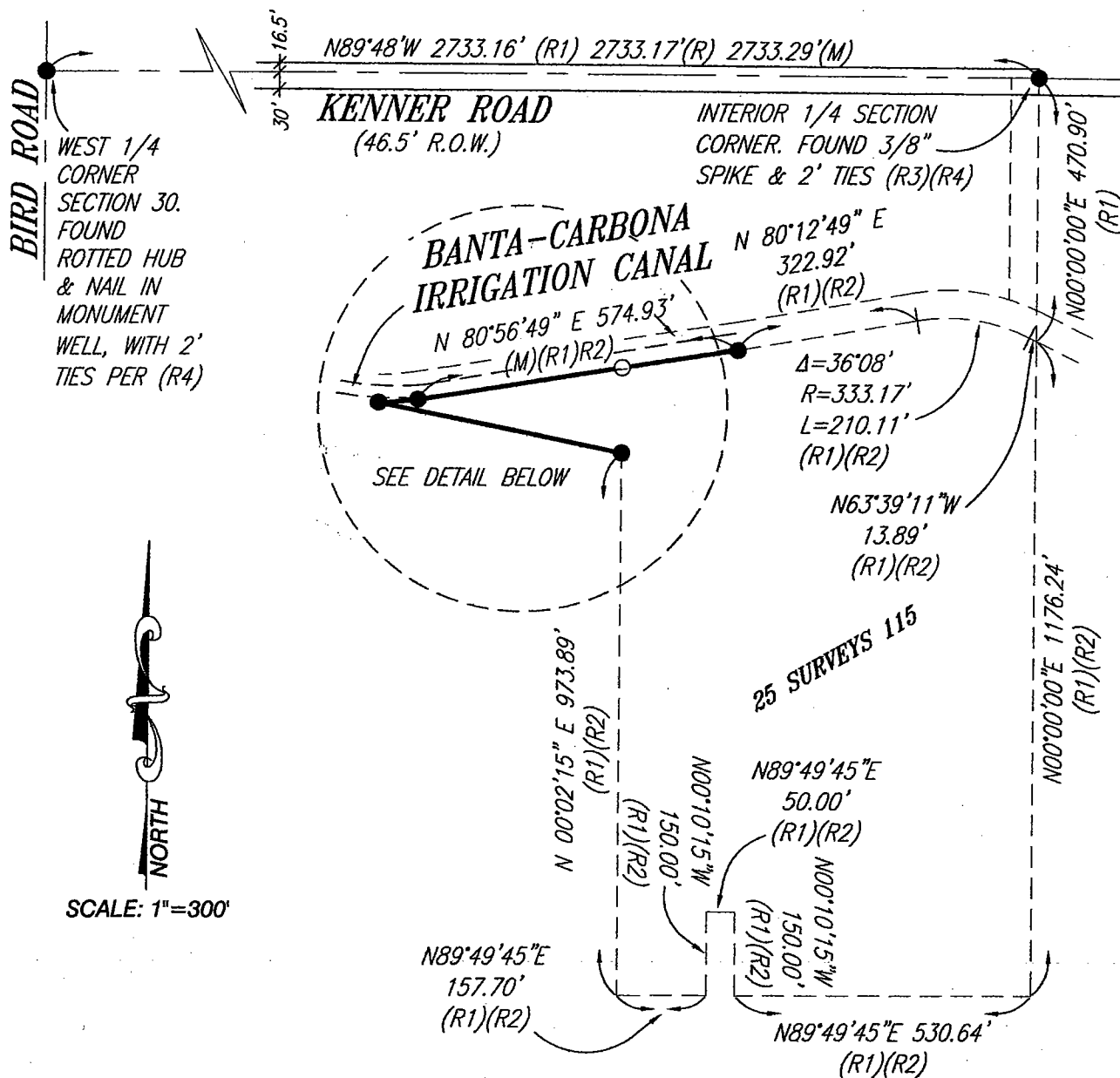
C. BowersP.L.S. Number 7049**COUNTY SURVEYOR'S STATEMENT**This Corner Record was received February 1, 2011 and examinedand filed February 15, 2011.

Signed

Thomas M. GauP.L.S. or R.C.E. Number 26994Title INTERIM COUNTY SURVEYOR

County Surveyor's Comment \_\_\_\_\_





### LEGEND

- = FOUND 3/4" IRON PIPE, TAGGED R.C.E. 14901, UNLESS NOTED OTHERWISE.
- = SET 3/4" IRON PIPE & CAP, P.L.S. 7049
- (M) = MEASURED
- (R1) = 25 SURVEYS 115
- (R2) = 29 SURVEYS 81
- (R3) = CORNER RECORD 10-02
- (R4) = 34 SURVEYS 72

### NOTES

ALL MAPS REFERENCE SAN JOAQUIN COUNTY RECORDS.