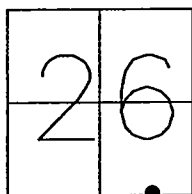


CORNER RECORD

Document Number CR-11-15City of LATHROP County of SAN JOAQUIN, CaliforniaBrief Legal Description A PORTION OF THE SOUTHEAST 1/4 OF SECTION 26, T.1S., R.6E., M.D.B.&M.

T1S, R6E

Government Corner ☐ Control ☐Meander ☐ Property ☐Rancho ☐ Other ☒Date of Survey 11-15-2010

COORDINATES (Optional)

N. _____

E. _____

Zone _____ NAD27 ☐ NAD83 ☐

NAD83 Epoch _____

Elev. _____

Vert. Datum: NGVD29 ☐ NAVD88 ☐Meas. Units: Metric ☐ Imperial ☐Corner - Left as found ☒ Found and tagged ☐ Established ☐ Reestablished ☐ Rebuilt ☐

Identification and type of corner found: Evidence used to identify or procedure used to establish or reestablished the corner:

FOUND 1" BOLT AT THE INTERSECTION OF LOUISE AVENUE AND HOWLAND ROAD IN THE SOUTHEAST1/4 OF SECTION 26, T.1S., R.6E., M.D.B.&M. SET HORIZONTAL TIES AS SHOWN ON PAGE 2.

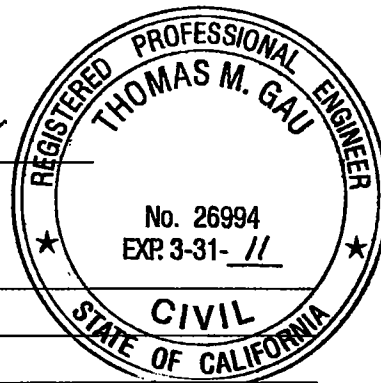
A description of the physical condition of the monument as found and as set or reset: _____

FOUND 1" BOLT. (SEE PAGE 2)This Corner Record was prepared by me or under my direction in conformance with the Land Surveyors' Act on DECEMBER 28, 2010.Signed [Signature] L.S. 6953

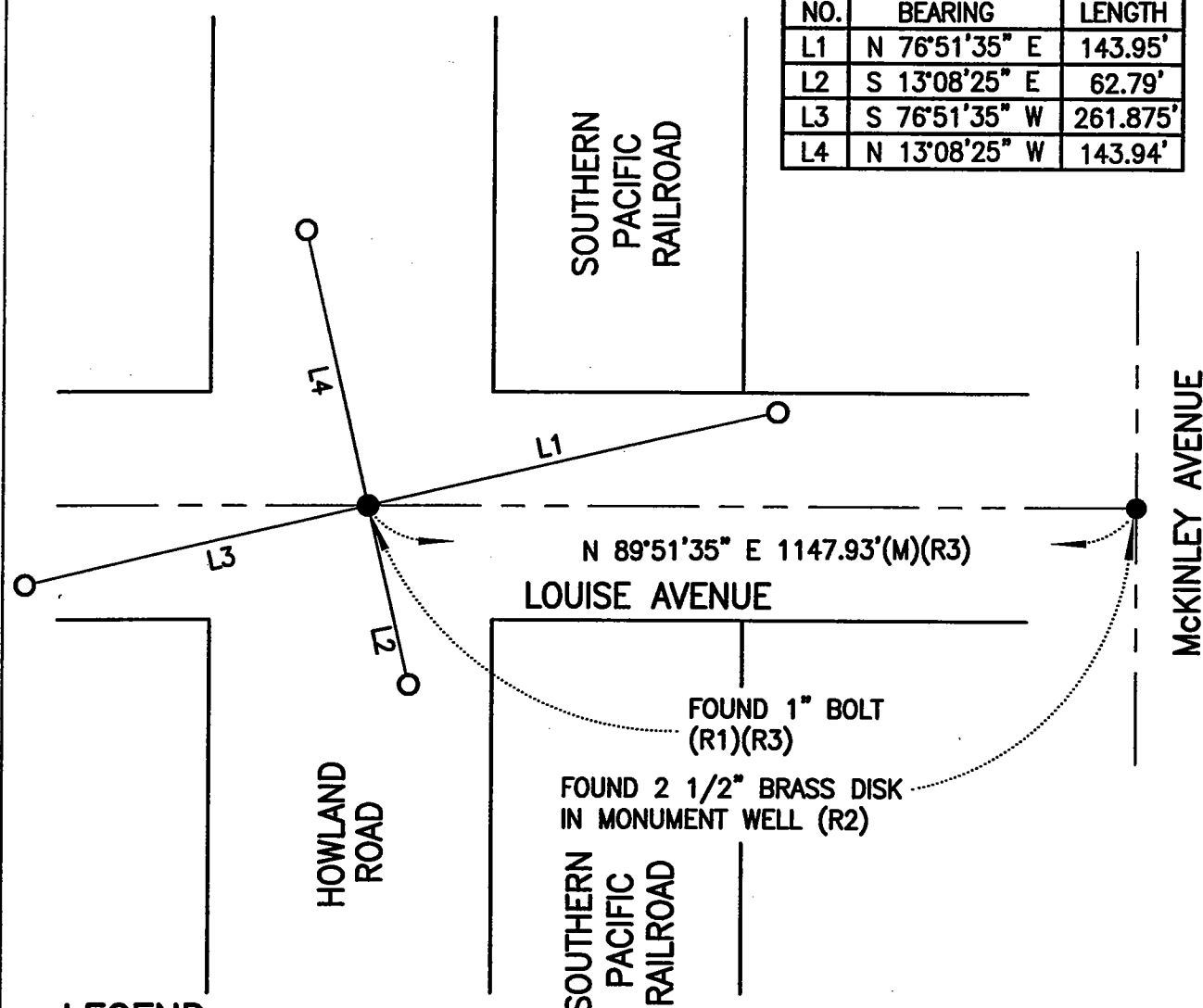
COUNTY SURVEYOR'S STATEMENT

This Corner Record was received February 4, 2011 and examined and filed February 15, 2011.Signed Thomas M. Gau P.L.S. or R.C.E. No. 26994Title INTERIM COUNTY SURVEYOR

County Surveyors Comment _____



LINE DATA TABLE		
NO.	BEARING	LENGTH
L1	N 76°51'35" E	143.95'
L2	S 13°08'25" E	62.79'
L3	S 76°51'35" W	261.875'
L4	N 13°08'25" W	143.94'



LEGEND:

- SET 3/4" x 24" IRON PIPE TAGGED LS 6953
- FOUND MONUMENT AS NOTED
- S.J.C.R. DENOTES SAN JOAQUIN COUNTY RECORDS
- M.&P. DENOTES MAPS AND PLATS, BOOK-PAGE, S.J.C.R.
- R.S. DENOTES RECORD OF SURVEY, BOOK-PAGE, S.J.C.R.
- (M) MEASURED DISTANCE. ALL DISTANCES ARE MEASURED UNLESS NOTED OTHERWISE.
- L1 LINE DATA TABLE LINE REFERENCE

REFERENCES:

- (R1) R.S. 12-52, S.J.C.R.
- (R2) R.S. 37-89, S.J.C.R.
- (R3) R.S. 30-92, S.J.C.R.

