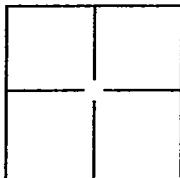


CORNER RECORD

Document Number CR-11-12City of StocktonCounty of San Joaquin, CaliforniaBrief Legal Description Spyglass Drive in Section 36 T 2. N. R. 5 E., and Section 31 T. 2 N. R. 6 E.**CORNER TYPE**

Government Corner	<input type="checkbox"/>	Control	<input type="checkbox"/>
Meander	<input type="checkbox"/>	Property	<input checked="" type="checkbox"/>
Rancho	<input type="checkbox"/>	Other	<input type="checkbox"/>

Date of Survey September 3, 2010**COORDINATES(Optional)**

N. _____
E. _____
Zone _____ NAD27 ☐ NAD83 ☐
NAD83 Epoch _____
Elev. _____
Vert. Datum: NGVD29 ☐ NADV88 ☐
Meas. Units: Metric ☐ Imperial ☐

Corner - Left as found ☒ Found and tagged ☐ Established ☐ Reestablished ☐ Rebuilt ☐

Identification and type of corner found: Evidence used to identify or procedure used to establish or reestablish the corner:

All monuments were located from the Final Map filed for record on 11/27/2000 in Book 35 of Maps and
Plats at Page 72. All monuments were measured using conventional and RTK GPS surveying methods. All distances
are provided in United States Survey Feet. This is a post construction Corner Record. Please refer to CR-10-59
for the pre construction Corner Record

A description of the physical condition of the monument as found and as set or reset: The centerline monuments found were
3/4 inch diameter rebars with caps stamped "LS 4334". The centerline monuments found were located in
monument boxes and were in good condition.

SURVEYOR'S STATEMENT

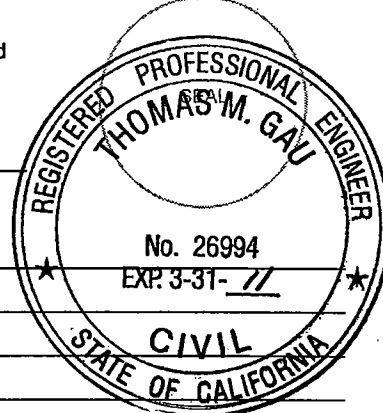
This Corner Record was prepared by me or under my direction in conformance with
the Land Surveyor's Act on February 4, 2011.

Signed [Signature] P.L.S. or R.C.E. No.: 8489**COUNTY SURVEYOR'S STATEMENT**

This Corner Record was received February 4, 2011 and examined
and filed February 15, 2011.

Signed Thomas M. Gau P.L.S. or R.C.E. No.: 26994Title INTERIM COUNTY SURVEYOR

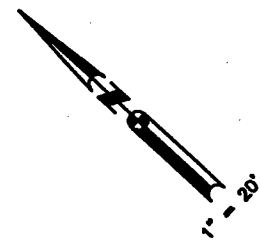
County Surveyor's Comment _____



POINT ID	DESCRIPTION
19276	FOUND A 3/4 INCH REBAR & CAP STAMPED "LS 4334"
19287	FOUND A CHISELED X IN THE GUTTER PAN
19291	FOUND A CHISELED X IN SIDEWALK
19292	FOUND A CHISELED X IN THE GUTTER PAN
19298	FOUND A 3/4 INCH REBAR & CAP STAMPED "LS 4334"
19309	FOUND A CHISELED X IN THE GUTTER PAN
56956	FOUND A 3/4 INCH REBAR & CAP STAMPED "LS 4334"
56957	FOUND A 3/4 INCH REBAR & CAP STAMPED "LS 4334"

APN 118-460-11
LOT 3683

APN 118-460-12
LOT 3682



S47°39'19"W
17.02'

19292

SPYGLASS COURT

19298

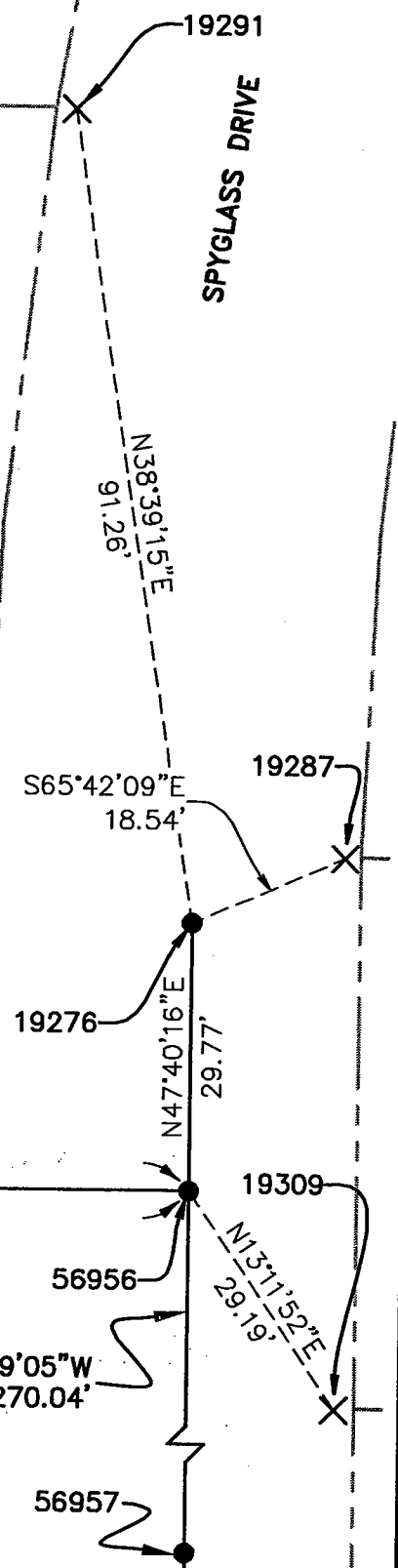
S42°20'21"E
92.95'

S42°20'21"E
221.35'

SURVEY NOTES

- 1) APN GIS PARCEL LINES ARE SHOWN FOR VISUAL REFERENCE ONLY. KSN DID NOT ESTABLISH PROPERTY LINES FOR THIS CORNER RECORD.
- 2) ALL LOT NUMBERS SHOWN ARE FROM THE FINAL MAP FILED IN BOOK 35 OF MAPS AND PLATS AT PAGE 72.

APN 118-460-03
LOT 3691



K S N KJELDSSEN
SINNOCK
NEUDECK
INC. Civil Engineers
and Land Surveyors

Post Office Box 844
711 N. Pershing Avenue
Stockton, CA 95201-0844
Office: (209) 946-0288
Fax: (209) 946-0288
E-mail: KSN@ksninc.com

M & C COMMUNITIES
SPYGLASS ROAD IMPROVEMENTS
BROOKSIDE ESTATES
CORNER RECORD

Design	Scale 1" = 20'	Date NOVEMBER 2010
Drawn CSM	Original Drawing Scale 0 1/4" 1/2"	Sheet Number 1 Of 1
Check SLB		Project File No. 2138-0010