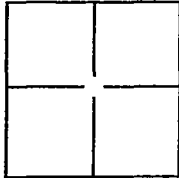


# CORNER RECORD

Document Number CR-11-11City of StocktonCounty of San Joaquin, CaliforniaBrief Legal Description Spyglass Drive in Section 36 T 2. N. R. 5 E., and Section 31 T. 2 N. R. 6 E.**CORNER TYPE**

Government Corner	<input type="checkbox"/>	Control	<input type="checkbox"/>
Meander	<input type="checkbox"/>	Property	<input checked="" type="checkbox"/>
Rancho	<input type="checkbox"/>	Other	<input type="checkbox"/>

Date of Survey September 3, 2010**COORDINATES(Optional)**

N. \_\_\_\_\_  
E. \_\_\_\_\_  
Zone \_\_\_\_\_ NAD27 ☐ NAD83 ☐  
NAD83 Epoch \_\_\_\_\_  
Elev. \_\_\_\_\_  
Vert. Datum: NGVD29 ☐ NADV88 ☐  
Meas. Units: Metric ☐ Imperial ☐

Corner - Left as found ☒ Found and tagged ☐ Established ☐ Reestablished ☒ Rebuilt ☐

Identification and type of corner found: Evidence used to identify or procedure used to establish or reestablish the corner.

All monuments were located from the Final Map filed for record on 11/27/2000 in Book 35 of Maps and Plats at Page 72. All monuments were measured using conventional and RTK GPS surveying methods. All distances are provided in United States Survey Feet. This is a post construction Corner Record. Please refer to CR-10-60 for the pre-construction Corner Record.

A description of the physical condition of the monument as found and as set or reset: The centerline monuments found were 3/4 inch diameter rebars with caps stamped "LS 4334". The centerline monuments found were located in monument boxes and were in good condition. All centerline monuments set were 3/4 inch rebars with 2 1/2 inch aluminum caps stamped "LS 8489". All monuments were set in monument boxes.

**SURVEYOR'S STATEMENT**

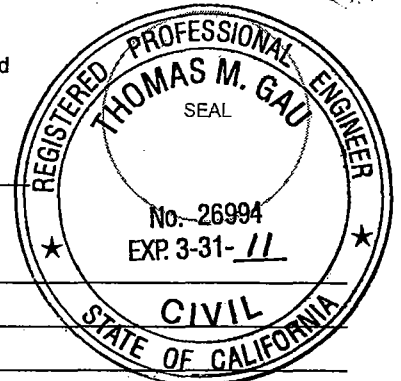
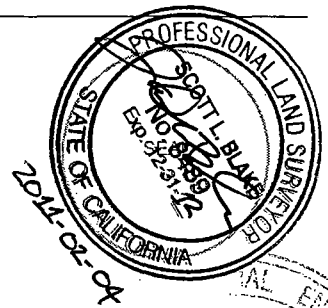
This Corner Record was prepared by me or under my direction in conformance with the Land Surveyor's Act on February 4, 2011.

Signed [Signature] P.L.S. or R.C.E. No.: 8489**COUNTY SURVEYOR'S STATEMENT**

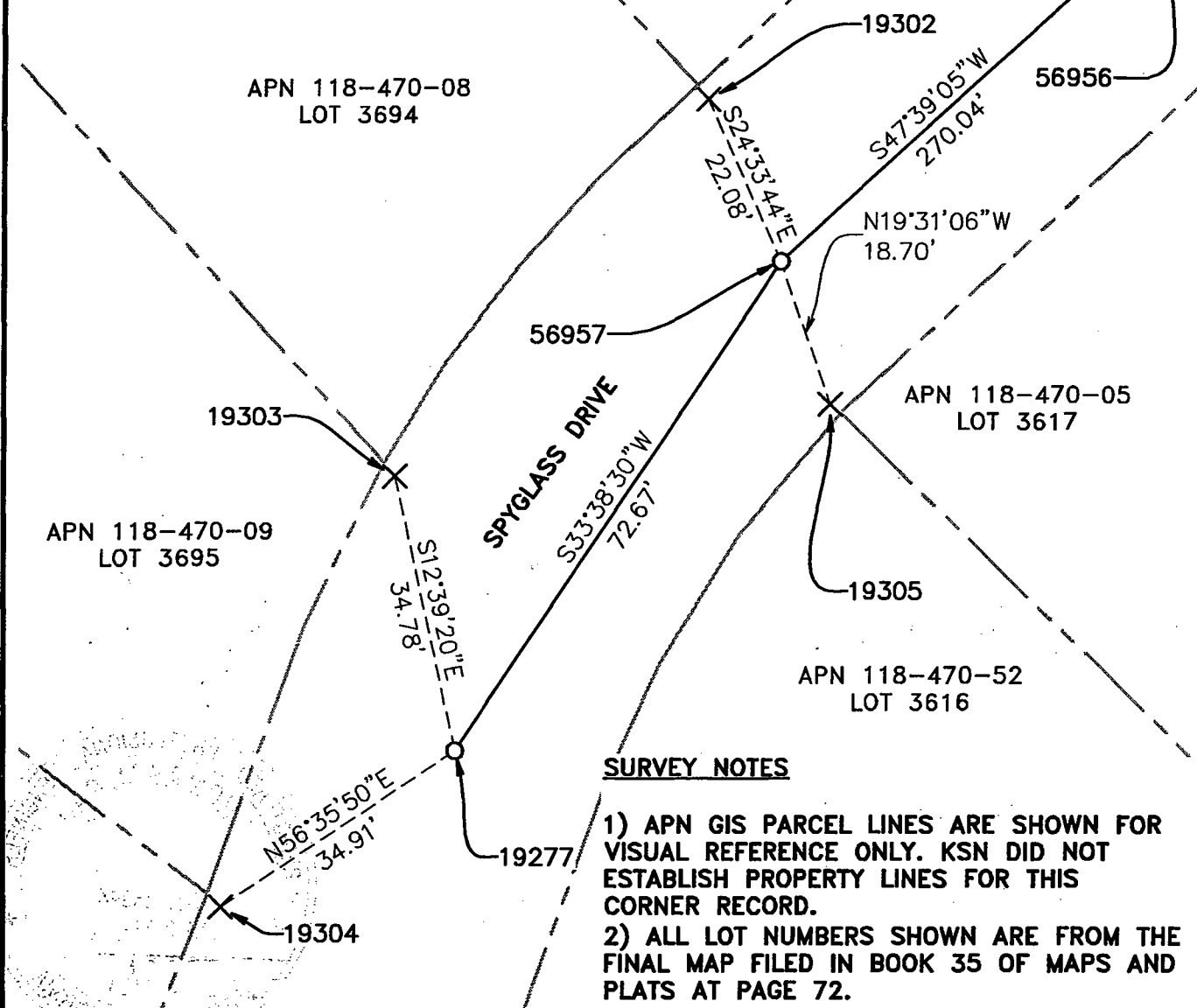
This Corner Record was received February 4, 2011 and examined and filed February 15, 2011.

Signed Thomas M. Gau P.L.S. or R.C.E. No.: 26994Title INTERIM COUNTY SURVEYOR

County Surveyor's Comment \_\_\_\_\_



POINT ID	DESCRIPTION
19304	FOUND A CHISELED X IN SIDEWALK.
19277	SET A 3/4 INCH REBAR & 2 1/2 INCH ALUMINUM CAP STAMPED "LS 8489"
19303	FOUND A CHISELED X IN SIDEWALK.
19302	FOUND A CHISELED X IN SIDEWALK.
19305	FOUND A CHISELED X IN GUTTER PAN
56956	FOUND A 3/4 INCH REBAR & CAP STAMPED "LS 4334"
56957	SET A 3/4 INCH REBAR & 2 1/2 INCH ALUMINUM CAP STAMPED "LS 8489"



#### SURVEY NOTES

- 1) APN GIS PARCEL LINES ARE SHOWN FOR VISUAL REFERENCE ONLY. KSN DID NOT ESTABLISH PROPERTY LINES FOR THIS CORNER RECORD.
- 2) ALL LOT NUMBERS SHOWN ARE FROM THE FINAL MAP FILED IN BOOK 35 OF MAPS AND PLATS AT PAGE 72.

**KJELSDEN SINNOCK NEUDECK INC.**  
Civil Engineers and Land Surveyors  
Post Office Box 844  
711 N. Pershing Avenue  
Stockton, CA 95201-0844  
Office: (209) 946-0288  
Fax: (209) 946-0296  
E-mail: KSN@ksninc.com

**M & C COMMUNITIES  
SPYGLASS ROAD IMPROVEMENT  
BROOKSIDE ESTATES  
CORNER RECORD**

Design	Scale 1" = 20'	Date NOVEMBER 2010
Drawn CSM	Original Drawing Scale 0 1/4" 1/2"	Sheet Number 1 Of 1
Check SLB		Project File No. 2138-0010

FILE SPEC: P:\2138\_Spyglass\_Corner\_Records\04\_Survey\300\_Boundary\Preliminary\Post\_Corner\_Record\101011-Post\_Corner\_Record\_CSM.dwg  
PLOT DATE: Feb 04, 2011 - 2:12pm