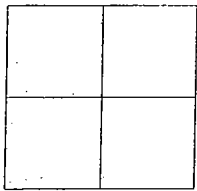


# CORNER RECORD

Document Number CR-11-07  
 County of San Joaquin, California

Brief Legal Description ACAMPO ROAD 2300'± EAST OF LOWER SACRAMENTO ROAD  
 (WITHIN SECTION 23, TOWNSHIP 4 NORTH, RANGE 6 EAST, MOUNT DIABLO BASE & MERIDIAN)



CORNER TYPE  
 Government Corner ☐ Control ☐  
 Meander ☐ Property ☐  
 Rancho ☐ Other ☒  
 Date of Survey NOVEMBER 10, 2010

COORDINATES (Optional)  
 N. \_\_\_\_\_  
 E. \_\_\_\_\_  
 Zone NAD27 ☐ NAD83 ☐  
 NAD83 Epoch \_\_\_\_\_  
 Elev. \_\_\_\_\_  
 Vert. Datum: NGVD29 ☐ NAVD88 ☐  
 Meas. Units: Metric ☐ Imperial ☒

Corner - Left as found ☒ Found and tagged ☐ Established ☐ Reestablished ☐ Rebuilt ☐

Identification and type of corner found: Evidence used to identify or procedure used to establish or reestablish the corner:  
SEE SKETCH ON BACKSIDE.

A description of the physical condition of the monument as found and as set or reset:  
SEE SKETCH ON BACKSIDE.

## SURVEYOR'S STATEMENT

This Corner Record was prepared by me or under my direction in conformance with  
 the Land Surveyors' Act on February 1, 2011.

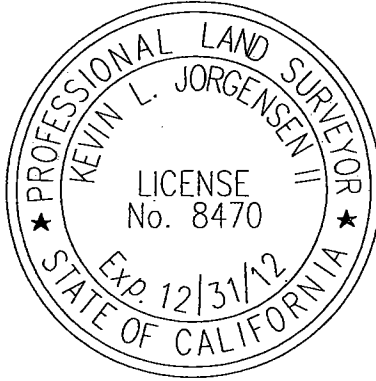
Signed [Signature] P.L.S. Number 8470

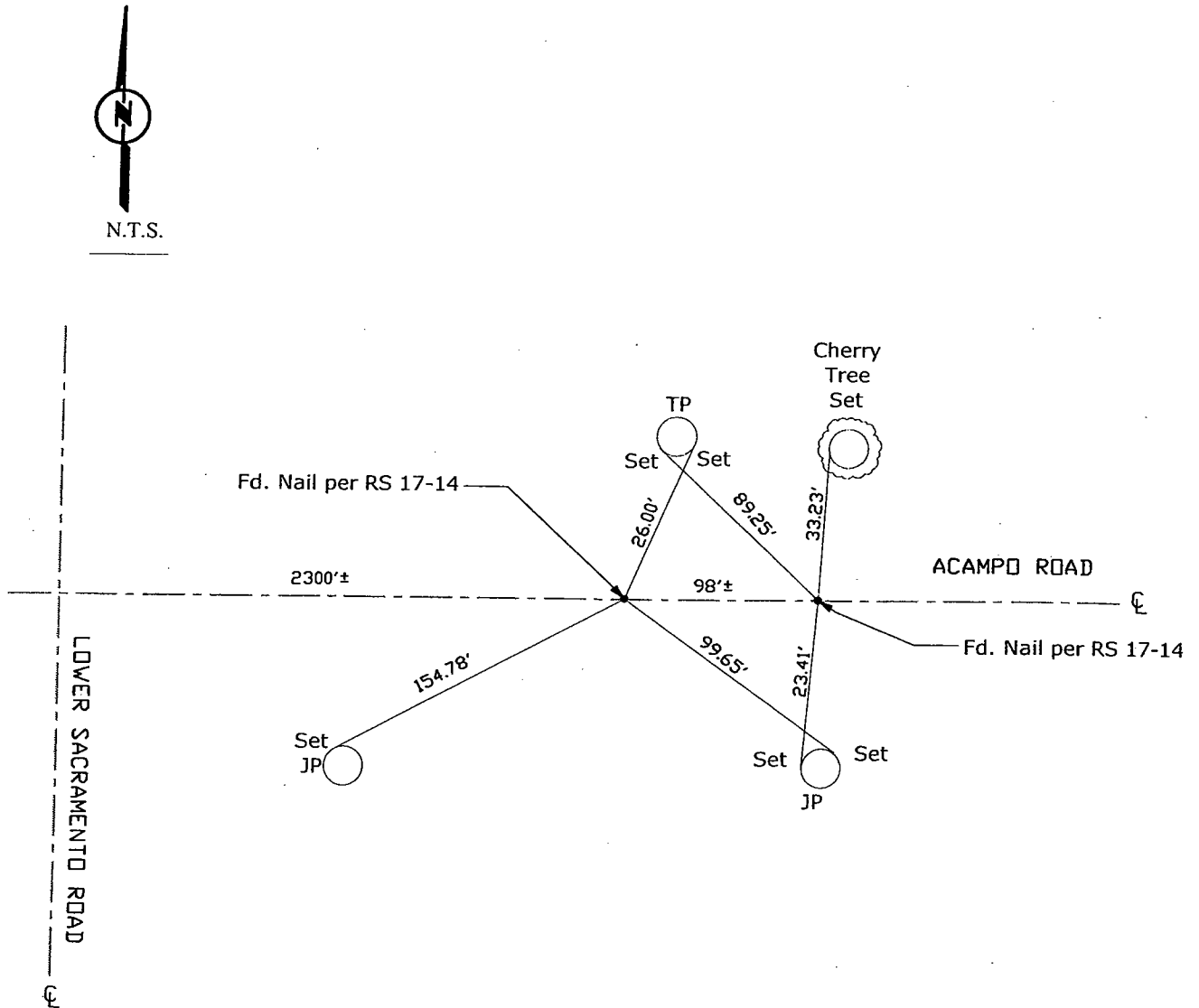
## COUNTY SURVEYOR'S STATEMENT

This Corner Record was received February 1, 2011 and examined  
 and filed February 8, 2011.

Signed [Signature] R.C.E. No. 26994  
 Title Interim County Surveyor

County Surveyor's Comment \_\_\_\_\_





Note: Found Monuments are not tagged unless otherwise noted.

"No Attempt Was Made to Verify the Monument(s)"

Set=Conc. Nail with Brass Washer Stamped

"S.J. Co.", unless otherwise noted

Fd.=Found Conc. Nail with Brass Washer Stamped

"S.J. Co.", unless otherwise noted

FP=Fence Post

JP=Joint Pole

LP=Light Pole

PP=Power Pole

GP=Guy Pole

SP=Service Pole

TP=Telephone Pole

S.F.N.=Searched Found Nothing

N.T.S.=Not To Scale

M&P=Maps & Plats

PM=Parcel Map

RS=Record of Survey

FB=Field Book