

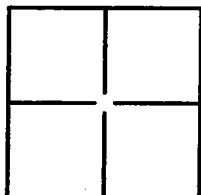
CORNER RECORD

City of STOCKTON

Document Number CR-10-85

County of SAN JOAQUIN, California

Brief Legal Description IN SECTION 49, C.M. WEBER GRANT



CORNER TYPE

Government Corner ☐ Control ☐
Meander ☐ Property ☐
Rancho ☐ Other ☒

Date of Survey OCTOBER 21, 2010

COORDINATES (Optional)

N _____
E _____
Zone _____ NAD27 ☐ NAD83 ☐
NAD83 Epoch _____
Elev. _____
Vert. Datum: NVGD29 ☐ NVGD88 ☐
Meas. Units: Metric ☐ Imperial ☐

Corner— Left as found ☐ Found and tagged ☐ Established ☐ Reestablished ☒ Rebuilt ☐

Identification and type of corner found: Evidence used to identify or procedure used to establish or reestablish the corner:
CENTERLINE MONUMENT ARCH-AIRPORT ROAD 950± NORTHWEST OF QANTAS LANE.

MONUMENT DESTROYED DURING RE-CONSTRUCTION PRIOR TO SETTING TIES.

RESET USING DISTANCES AND BEARINGS AS SHOWN ON MAP FILED IN BOOK 35 OF SURVEYS AT PAGE 172, SAN JOAQUIN COUNTY RECORDS. 50' WITNESS CORNER (28-SURVEYS-87) AND 67' WITNESS CORNER (26-MAPS & PLATS-122) WERE SEARCHED FOR, BUT NOT FOUND.

A description of the physical condition of the monument as found and as set or reset: _____

SEE PAGE 2

SURVEYOR'S STATEMENT

This Corner Record was prepared by me or under my direction in conformance with the Land Surveyors' Act on DECEMBER 1, 2010,

Signed [Signature] P.L.S. or R.C.E. Number 6406



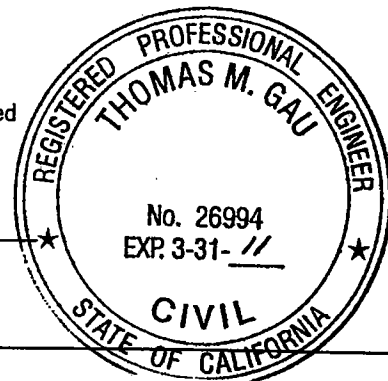
COUNTY SURVEYOR'S STATEMENT

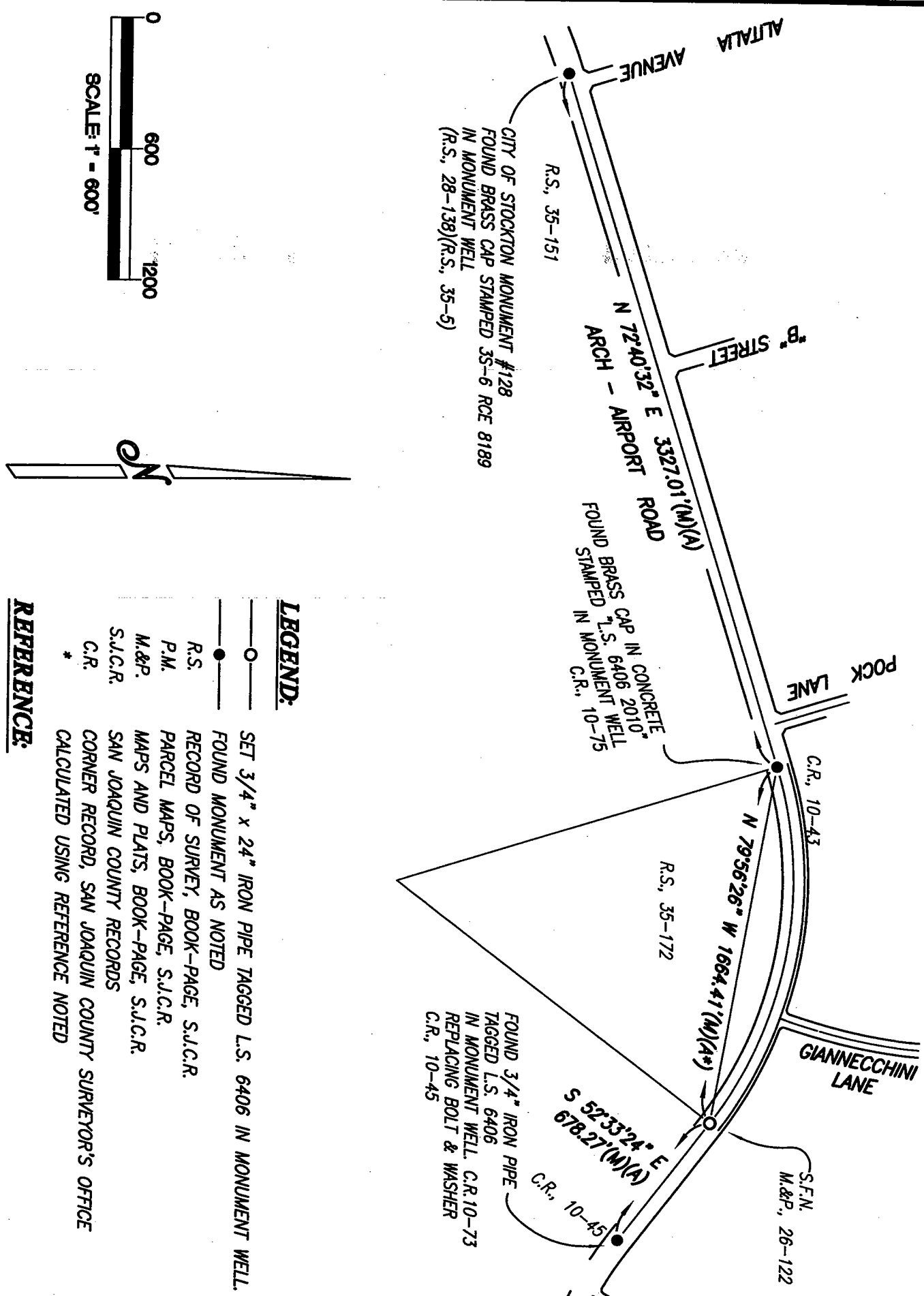
This Corner Record was received December 2, 2010, and examined and filed December 20, 2010

Signed Thomas M. Gau P.L.S. or R.C.E. No: 23341

per Title COUNTY SURVEYOR

County Surveyor's Comment _____





LEGEND:

- SET 3/4" x 24" IRON PIPE TAGGED L.S. 6406 IN MONUMENT WELL.
- FOUND MONUMENT AS NOTED
- R.S. RECORD OF SURVEY, BOOK-PAGE, S.J.C.R.
- P.M. PARCEL MAPS, BOOK-PAGE, S.J.C.R.
- M.&P. MAPS AND PLATS, BOOK-PAGE, S.J.C.R.
- S.J.C.R. SAN JOAQUIN COUNTY RECORDS
- C.R. CORNER RECORD, SAN JOAQUIN COUNTY SURVEYOR'S OFFICE
- * CALCULATED USING REFERENCE NOTED

REFERENCE:

- (A) RECORD OF SURVEY, 35-172, S.J.C.R.