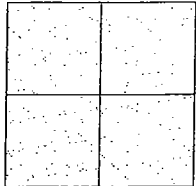


CORNER RECORD

Document Number CR-10-83
County of San Joaquin, California

City of _____

Brief Legal Description BETHANY ROAD @ SAN JOSE ROAD
(WITHIN RANCHO EL PESCADERO)



CORNER TYPE

Government Corner ☐ Control ☐
Meander ☐ Property ☒
Rancho ☐ Other ☐
Date of Survey September 09, 2010

COORDINATES (Optional)

N. _____
E. _____
Zone _____ NAD27 ☐ NAD83 ☐
NAD83 Epoch _____
Elev. _____
Vert. Datum: NGVD29 ☐ NAVD88 ☐
Meas. Units: Metric ☐ Imperial ☒

Corner - Left as found ☒ Found and tagged ☐ Established ☐ Reestablished ☐ Rebuilt ☐

Identification and type of corner found: Evidence used to identify or procedure used to establish or reestablish the corner:
SEE SKETCH ON BACKSIDE.

A description of the physical condition of the monument as found and as set or reset: _____
SEE SKETCH ON BACKSIDE.

SURVEYOR'S STATEMENT

This Corner Record was prepared by me or under my direction in conformance with
the Land Surveyors' Act on December 1, 2010.

Signed [Signature] P.L.S. Number 8470

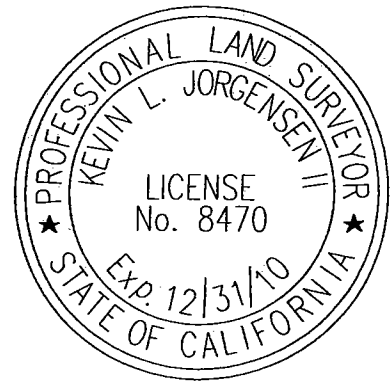
COUNTY SURVEYOR'S STATEMENT

This Corner Record was received December 2, 2010 and examined
and filed December 20, 2010.

Signed [Signature] R.C.E. No. 23341

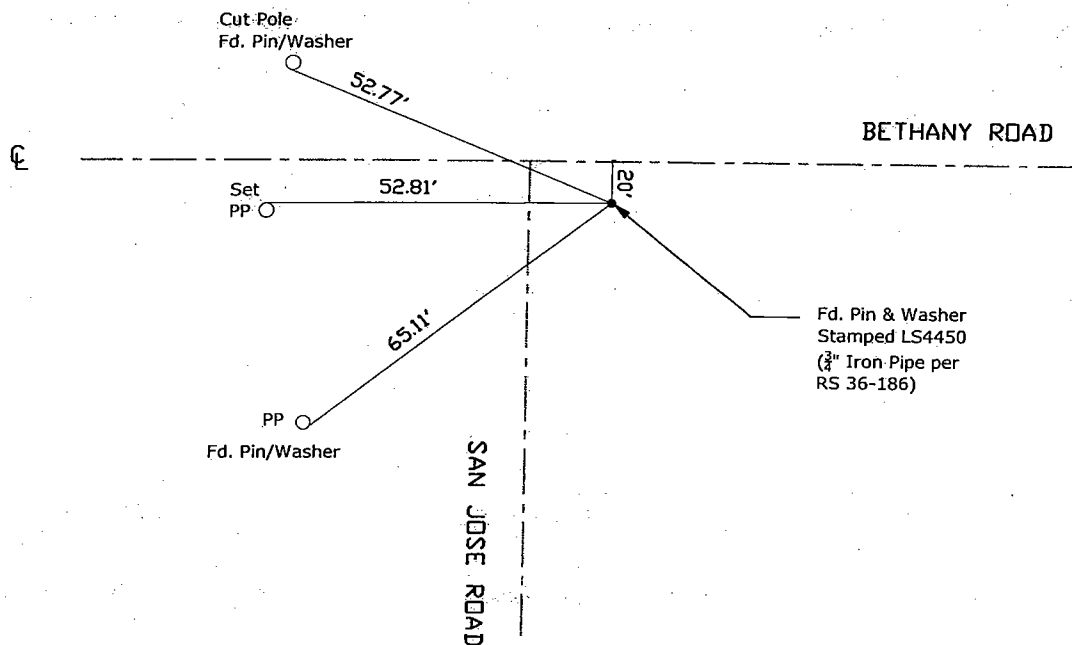
FOR Title County Surveyor

County Surveyor's Comment _____





N.T.S.



Note: Found Monuments are not tagged
unless otherwise noted.

"No Attempt Was Made to Verify the Monument(s)"

Set=Conc. Nail with Brass Washer Stamped

"S.J. Co.", unless otherwise noted

Fd.=Found Conc. Nail with Brass Washer Stamped

"S.J. Co.", unless otherwise noted

FP=Fence Post

JP=Joint Pole

LP=Light Pole

PP=Power Pole

GP=Guy Pole

SP=Service Pole

TP=Telephone Pole

S.F.N.=Searched Found Nothing

N.T.S.=Not To Scale

M&P=Maps & Plats

PM=Parcel Map

RS=Record of Survey

FB=Field Book