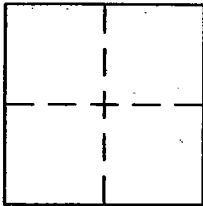


CORNER RECORD

Document Number C.R. 10-78City of STOCKTONCounty of SAN JOAQUIN, CaliforniaBrief Legal Description MONUMENT ON MARIPOSA ROAD 1,600'± SOUTHEASTERLY OF THE INTERSECTION WITH CARPENTER ROAD PER RECORD OF SURVEY FILED IN BOOK 32 SURVEYS PAGE 96.

CORNER TYPE

Government Corner ☐ Control ☐
Meander ☐ Property ☐
Rancho ☐ Other ☒
Date of Survey 08/07/2010

COORDINATES (Optional)

N. _____
E. _____
Zone _____ NAD27 ☐ NAD83 ☐
NAD83 Epoch _____
Elev. _____
Vert. Datum: NGVD29 ☐ NAVD88 ☐
Meas. Units: Metric ☐ Imperial ☐
U.S. Survey Feet ☐

Corner - Left as found ☒ Found and tagged ☐ Established ☐ Reestablished ☐ Rebuilt ☐

Identification and type of corner found: Evidence used to identify or procedure used to establish or reestablish the corner:

FOUND 2-1/2" DIAMETER BRASS DISK IN MONUMENT WELL STAMPED "CITY OF STOCKTON SURVEYMONUMENT LS 4334 11S-2", AS SHOWN ON THAT CERTAIN RECORD OF SURVEY FILED IN BOOK 32 OFSURVEYS, AT PAGE 96, SAN JOAQUIN COUNTY RECORDS. THE DISK WAS REFERENCED OUT AS SHOWNON THE ACCOMPANYING SKETCH.

A description of the physical condition of the monument as found and as set or reset:

THE MONUMENT WAS FOUND IN GOOD CONDITION. SAID MONUMENT WILL BE DESTROYED DUE TOCONSTRUCTION ACTIVITIES

SURVEYOR'S STATEMENT

This Corner Record was prepared by me or under my direction in conformance with

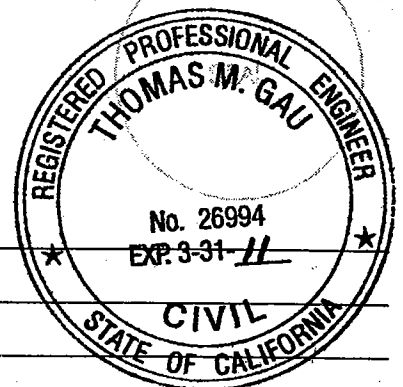
the Land Surveyor's Act on OCTOBER 28, 2010Signed Anthony C. McCants P.L.S. or R.C.E. No. 5944

ANTHONY C. McCANTS
Kier & Wright, Civil Engineers & Surveyors, Inc., Pleasanton, CA
COUNTY SURVEYOR'S STATEMENT

This Corner Record was received NOVEMBER 8, 2010and examined and filed NOVEMBER 23, 2010Signed Thomas M. Gau P.L.S. or R.C.E. No. 23341

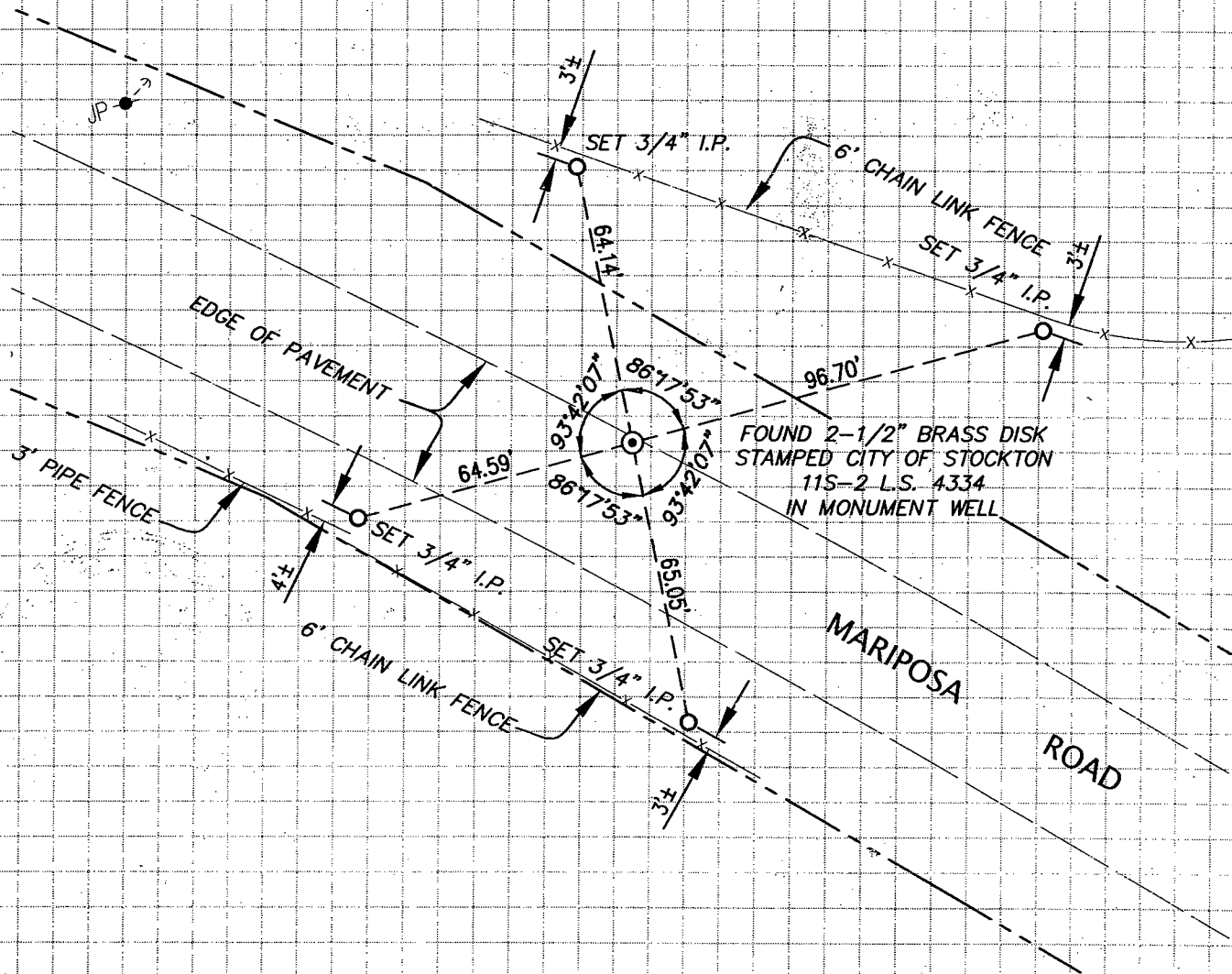
FOR
Title COUNTY SURVEYOR

County Surveyor's Comment _____



LEGEND

- ⊙ FOUND 2-1/2" BRASS DISK STAMPED CITY OF STOCKTON 11S-2 L.S. 4334 IN MONUMENT WELL
- JP JOINT POLE
- IP IRON PIPE
- PP POWER POLE
- SET 3/4" X 18" IRON PIPE WITH PLASTIC CAP STAMPED "LS-5944"



THIS CORNER RECORD IS BEING PREPARED IN ACCORDANCE WITH SECTION 8771(b) OF THE BUSINESS AND PROFESSIONS CODE, PROFESSIONAL LAND SURVEYORS' ACT.

0 20' 40' 80'
Scale 1" = 40 ft



KW#A07567-49