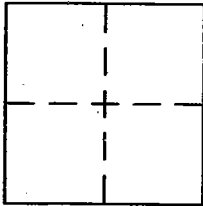


CORNER RECORD

Document Number C.R. 10-77
City of STOCKTON County of SAN JOAQUIN, California

Brief Legal Description MONUMENT ON MARIPOSA ROAD 1,100± NORTHWESTERLY OF THE INTERSECTION WITH NORTH LITTLE JOHNS CREEK PER RECORD OF SURVEY FILED IN BOOK 32 SURVEYS PAGE 96.



CORNER TYPE

Government Corner ☐ Control ☐
Meander ☐ Property ☐
Rancho ☐ Other ☒
Date of Survey 08/07/2010

COORDINATES (Optional)

N. _____
E. _____
Zone _____ NAD27 ☐ NAD83 ☐
NAD83 Epoch _____
Elev. _____
Vert. Datum: NGVD29 ☐ NAVD88 ☐
Meas. Units: Metric ☐ Imperial ☐
U.S. Survey Feet ☐

Corner - Left as found ☒ Found and tagged ☐ Established ☐ Reestablished ☐ Rebuilt ☐

Identification and type of corner found: Evidence used to identify or procedure used to establish or reestablish the corner:
FOUND 2-1/2" DIAMETER BRASS DISK IN MONUMENT WELL STAMPED "CITY OF STOCKTON SURVEY
MONUMENT LS 4334 11S-3", AS SHOWN ON THAT CERTAIN RECORD OF SURVEY FILED IN BOOK 32 OF
SURVEYS, AT PAGE 96, OF SAN JOAQUIN COUNTY RECORDS. THE DISK WAS REFERENCED OUT AS
SHOWN ON THE ACCOMPANYING SKETCH.

A description of the physical condition of the monument as found and as set or reset:
THE MONUMENT WAS FOUND IN GOOD CONDITION. SAID MONUMENT WILL BE DESTROYED DUE TO
CONSTRUCTION ACTIVITIES

SURVEYOR'S STATEMENT

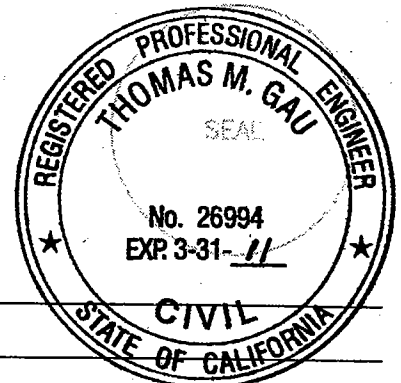
This Corner Record was prepared by me or under my direction in conformance with
the Land Surveyor's Act on OCTOBER 28, 2010

Signed Anthony C. McCants P.L.S. or R.C.E. No. 5944
Kier & Wright, Civil Engineers & Surveyors, Inc., Pleasanton, CA
COUNTY SURVEYOR'S STATEMENT



This Corner Record was received NOVEMBER 8, 2010
and examined and filed NOVEMBER 23, 2010

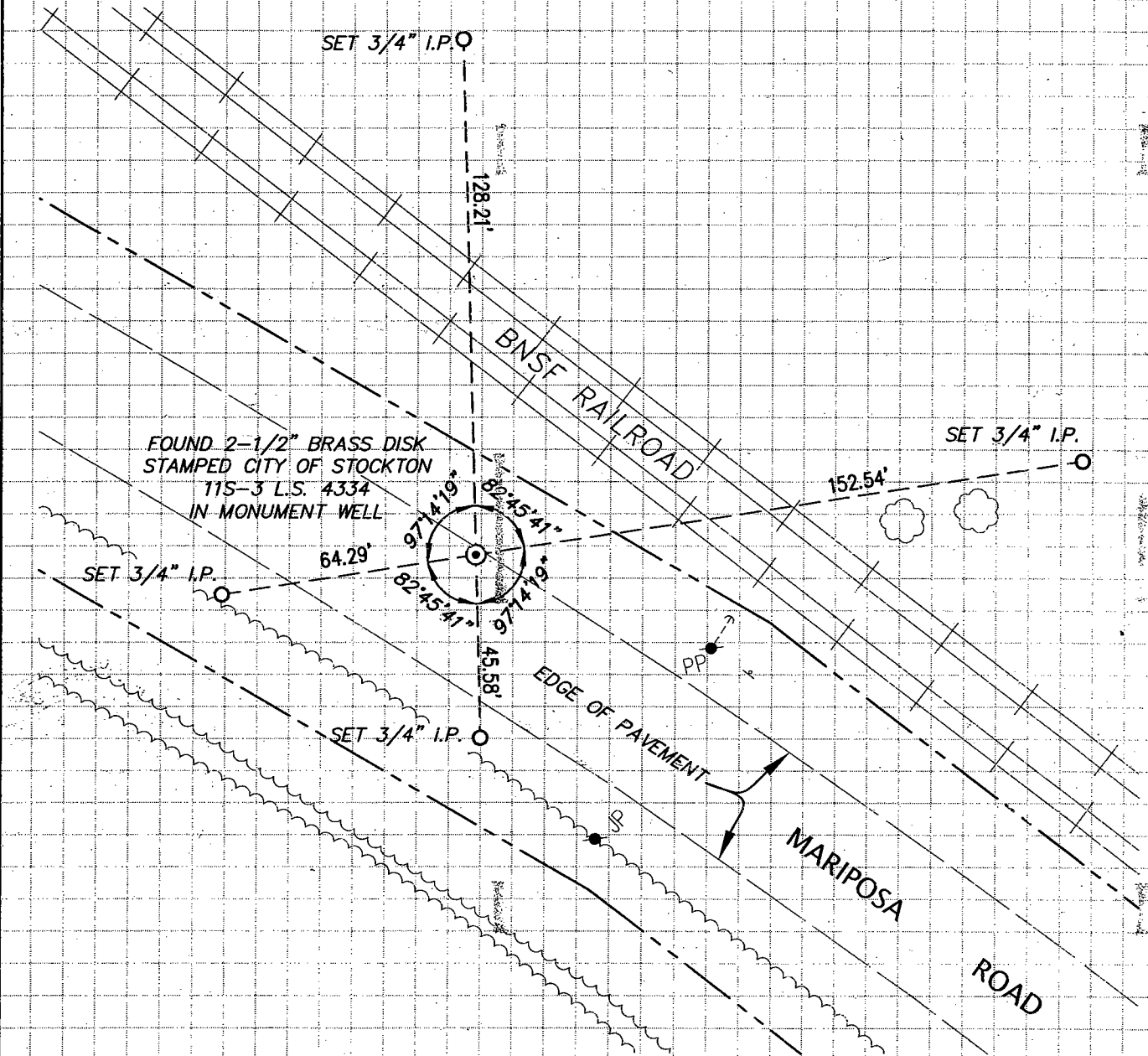
Signed Thomas M. Gau P.L.S. or R.C.E. No. 23341
For Title COUNTY SURVEYOR



County Surveyor's Comment _____

LEGEND

- ⊙ FOUND 2-1/2" BRASS DISK STAMPED CITY OF STOCKTON 11S-3 L.S. 4334 IN MONUMENT WELL
- JP JOINT POLE
- IP IRON PIPE
- PP POWER POLE
- SET 3/4" X 18" IRON PIPE WITH PLASTIC CAP STAMPED "LS 5944"



THIS CORNER RECORD IS BEING PREPARED IN ACCORDANCE WITH SECTION 8771(b) OF THE BUSINESS AND PROFESSIONS CODE, PROFESSIONAL LAND SURVEYORS' ACT.

0 20' 40' 80'
Scale 1" = 40 ft



KW#A07567-49