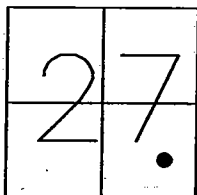


# CORNER RECORD

Document Number CR-10-76

City of LATHROP County of SAN JOAQUIN, California

Brief Legal Description A PORTION OF THE SOUTH 1/2 OF SECTION 27, T.1S., R.6E., M.D.B.&M.



T1S, R6E

Government Corner ☐ Control ☐  
 Meander ☐ Property ☐  
 Rancho ☐ Other ☒  
 Date of Survey 10-14-2010

## COORDINATES (Optional)

N. \_\_\_\_\_  
 E. \_\_\_\_\_  
 Zone \_\_\_\_\_ NAD27 ☐ NAD83 ☐  
 NAD83 Epoch \_\_\_\_\_  
 Elev. \_\_\_\_\_  
 Vert. Datum: NGVD29 ☐ NAVD88 ☐  
 Meas. Units: Metric ☐ Imperial ☐

Corner - Left as found ☐ Found and tagged ☐ Established ☐ Reestablished ☒ Rebuilt ☐

Identification and type of corner found: Evidence used to identify or procedure used to establish or reestablished the corner:  
2 1/2" BRASS DISK STAMPED "LS 7079" IN MONUMENT WELL AT THE INTERSECTION OF HARLAN ROAD  
AND "O" STREET IN THE SOUTH 1/2 OF SECTION 27, T.1S., R.6E., M.D.B.&M. WAS DESTROYED  
DURING THE CONSTRUCTION OF HARLAN ROAD IMPROVEMENTS. USED FOUND WITNESS CORNERS AS  
SHOWN ON CORNER RECORD CR-10-66.

A description of the physical condition of the monument as found and as set or reset:  
SET 2 1/2" BRASS DISK STAMPED "LS 6953 10-10" IN MONUMENT WELL USING TIES SHOWN ON  
CORNER RECORD CR-10-66. (SEE PAGE 2)

This Corner Record was prepared by me or under my direction in conformance with the Land Surveyors' Act on OCTOBER 21, 2010.

Signed [Signature] L.S. 6953

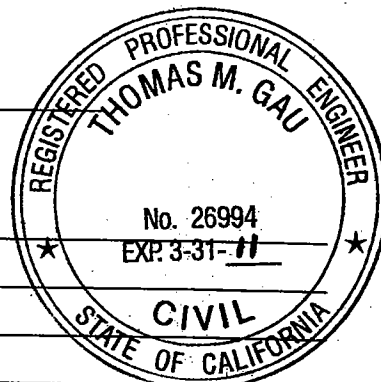


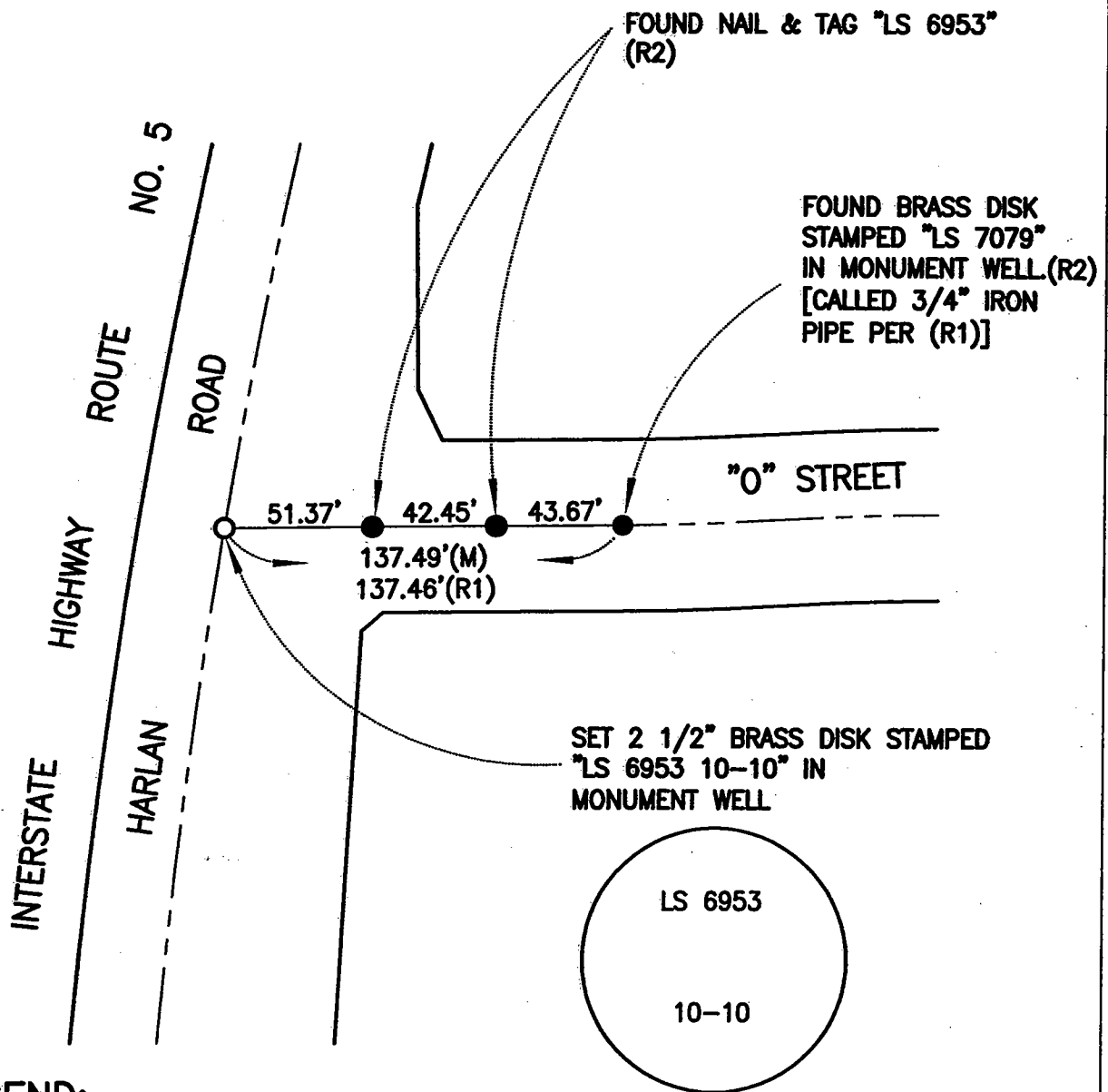
## COUNTY SURVEYOR'S STATEMENT

This Corner Record was received NOVEMBER 3, 2010 and examined and filed NOVEMBER 23, 2010.

Signed Thomas M. Gau P.L.S. or R.C.E. No. 23341  
 Title COUNTY SURVEYOR

County Surveyors Comment \_\_\_\_\_





### LEGEND:

- SET 2 1/2" BRASS DISK "LS 6953 10-10"
- FOUND MONUMENT AS NOTED
- S.J.C.R. DENOTES SAN JOAQUIN COUNTY RECORDS
- M.&P. DENOTES MAPS AND PLATS, BOOK-PAGE, S.J.C.R.
- (M) MEASURED DISTANCE. ALL DISTANCES ARE MEASURED UNLESS NOTED OTHERWISE.

### REFERENCES:

- (R1) M.&P. 40-43, S.J.C.R.
- (R2) CORNER RECORD CR-10-66



NOT TO SCALE