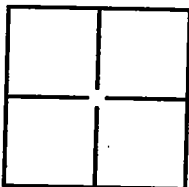


# CORNER RECORD

City of STOCKTON

Document Number CR-10-72  
County of SAN JOAQUIN, California

Brief Legal Description IN SECTION 48, C.M. WEBER GRANT



## CORNER TYPE

Government Corner ☐ Control ☐  
Meander ☐ Property ☐  
Rancho ☐ Other ☒

Date of Survey AUGUST 16, 2010

## COORDINATES (Optional)

N \_\_\_\_\_  
E \_\_\_\_\_  
Zone \_\_\_\_\_ NAD27 ☐ NAD83 ☐  
NAD83 Epoch \_\_\_\_\_  
Elev. \_\_\_\_\_  
Vert. Datum: NVGD29 ☐ NVGD88 ☐  
Meas. Units: Metric ☐ Imperial ☐

Corner— Left as found ☐ Found and tagged ☐ Established ☐ Reestablished ☒ Rebuilt ☐

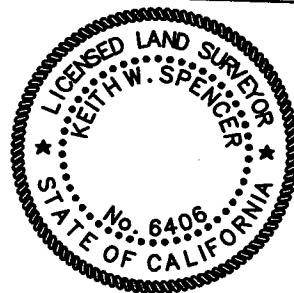
Identification and type of corner found: Evidence used to identify or procedure used to establish or reestablish the corner:  
CENTERLINE MONUMENT NORTH SIDE ARCH-AIRPORT ROAD AT POCK LANE.  
MONUMENT DESTROYED DURING RE-CONSTRUCTION.  
RESET FROM TIES AS SHOWN ON PAGE 2.

A description of the physical condition of the monument as found and as set or reset:  
SEE PAGE 2

## SURVEYOR'S STATEMENT

This Corner Record was prepared by me or under my direction in conformance with  
the Land Surveyors' Act on OCTOBER 11, 2010,

Signed [Signature] P.L.S. or R.C.E. Number 6406



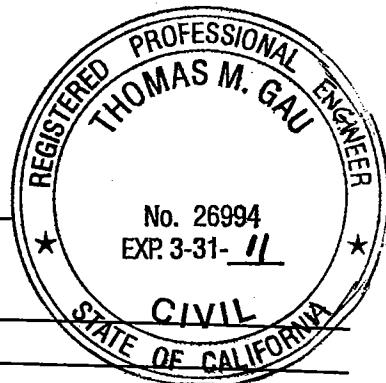
## COUNTY SURVEYOR'S STATEMENT

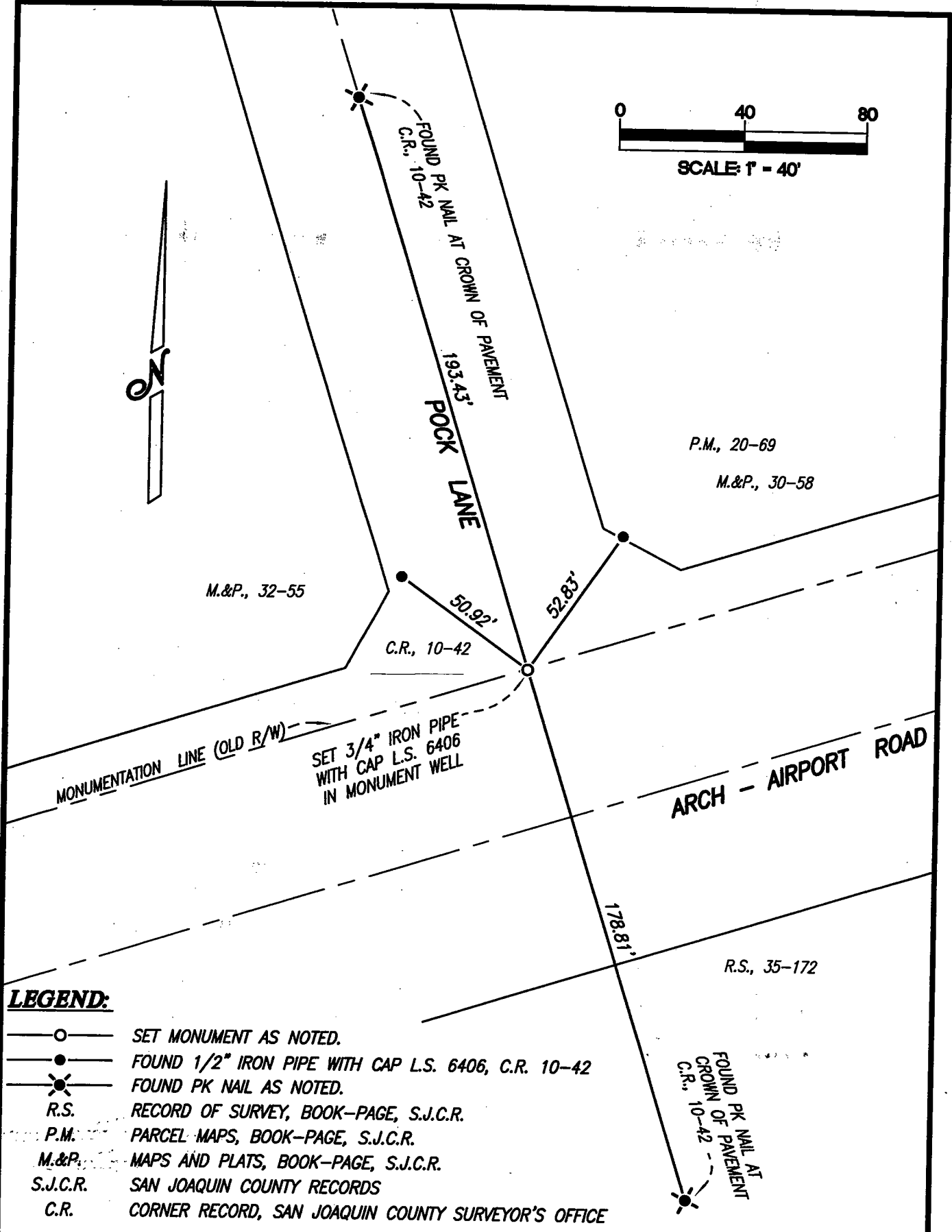
This Corner Record was received OCTOBER 12, 2010 and examined  
and filed NOVEMBER 1, 2010

Signed Thomas M. Gau P.L.S. or R.C.E. No: 23341

~~FOR~~ Title COUNTY SURVEYOR

County Surveyor's Comment \_\_\_\_\_





**LEGEND:**

- SET MONUMENT AS NOTED.
- FOUND 1/2" IRON PIPE WITH CAP L.S. 6406, C.R. 10-42
- ✱ FOUND PK NAIL AS NOTED.
- R.S. RECORD OF SURVEY, BOOK-PAGE, S.J.C.R.
- P.M. PARCEL MAPS, BOOK-PAGE, S.J.C.R.
- M.&P. MAPS AND PLATS, BOOK-PAGE, S.J.C.R.
- S.J.C.R. SAN JOAQUIN COUNTY RECORDS
- C.R. CORNER RECORD, SAN JOAQUIN COUNTY SURVEYOR'S OFFICE